

Informations Rapides

30 juillet 2014 - n° 177



■ Turnover in industry and construction – May 2014

In May 2014, the turnover in manufacturing industry dropped compared to April (–1.4%)

Every index in this issue is in value, seasonally and working day adjusted. Bridging days (Fridays 2nd, 9th and 30th May) were considered like normal working days for SA-WDA treatment. The commentary shows variations of subsections by decreasing contribution. The contribution of a subsection depends on the extent of the change and on its weight.

In May 2014, the turnover fell sharply in the **manufacturing industry** (–1.4%) after a slight decrease in April (–0.2%). Exports plunged even more (–3.0%). The turnover dropped in the **industry as a whole** (–1.1%).

Decline over the last three months (–0.7%)...

Over the quarter (q-o-q), the turnover dipped in the **manufacturing industry** (–0.7%) as in the **industry as a whole** (–1.1%).

The turnover went down in **other manufacturing** (–1.1%), mainly in the **manufacture of basic metals and fabricated metal products** (–1.7%) and in the **manufacture of chemicals and chemical products** (–1.8%). It dropped in the **manufacture of coke and refined petroleum products** (–3.9%) and in the **electrical and electronic equipment; machine equipment** (–1.3%). Conversely, it grew in the **manufacture of transport equipment** (+1.4%) owed to a sharp rise in the **manufacture of other transport equipment** (+4.3%). It stabilized in the **manufacture of food products and beverages** (0.0%).

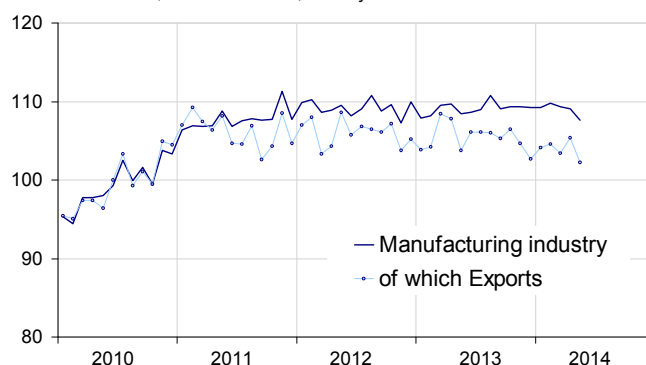
...and over the last year (–0.5%)

Year-on-year, the turnover declined in the **manufacturing industry** (–0.5%).

Over this period, the turnover dipped in the **manufacture of coke and refined petroleum products** (–4.2%) and in the **electrical and electronic equipment; machine equipment** (–1.8%); it fell slightly in **other manufacturing** (–0.3%). On the contrary, it rose in the **manufacture of food products and beverages** (+0.6%) and, slightly, in the **manufacture of transport equipment** (+0.2%).

Turnover in manufacturing industry

Turnover indexes, value SA-WDA, Base year 2010



Source: INSEE

Variation of the turnover in industry and construction

SA-WDA value, Base year 2010

Nace classification	Weight**	Change in %			
		May/ Apr.	Apr./ Mar.	q-o-q (1)	y-o-y (2)
BE: INDUSTRY	10000	–1.1	–0.2	–1.1	–1.1
CZ: MANUFACTURING	8373	–1.4	–0.2	–0.7	–0.5
<i>Of which Exports</i>	2731	–3.0	1.9	–0.1	–2.8
(C1): Manufacture of food products and beverages	1647	–2.7	2.5	0.0	0.6
(C2): Manufacture of coke and refined petroleum products	478	7.0	–3.3	–3.9	–4.2
(C3): Electrical and electronic equipment; machine equipment	1005	–2.7	0.9	–1.3	–1.8
(C4): Manufacture of transport equipment	1428	–0.2	–1.9	1.4	0.2
(C5): Other manufacturing	3815	–2.0	–0.6	–1.1	–0.3
DE: Mining and quarrying; energy; water supply; waste management	1627	0.1	–0.3	–3.7	–4.5
FZ: CONSTRUCTION	10000	–0.5	0.3	0.4	1.5

** 10000=B...E and F

(1) Quarter-on-quarter: last three months / previous three months

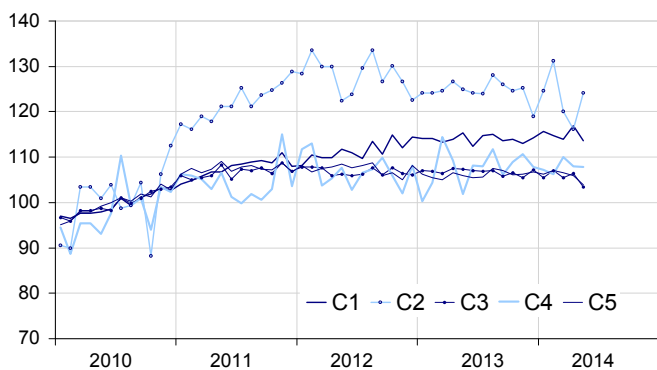
(2) Year-on-year: last three months / same three months of the previous year

The codes correspond to different levels of aggregation of the NACE classification.

Source: INSEE

Turnover in manufacturing industry by sector

Turnover indexes, value SA-WDA, Base year 2010



Source: INSEE

In May 2014, the turnover fell sharply in other manufacturing (-2.0%)

In May, the turnover decreased notably in *other manufacturing* for the third month in a row (-2.0%, after -0.6% in April and -0.5% in March). It declined in all sectors, mainly in the manufacture of rubber and plastic products, and other non-mineral products (-3.5%), in the manufacture of basic metals and fabricated metal products (-1.8%) and in the manufacture of chemicals and chemical products (-1.9%).

Considerable fall in food products (-2.7%)...

In May, the turnover plummeted in the manufacture of food products and beverages (-2.7%) after a substantial rise in April (+2.5%).

...and in equipment (-2.7%)

The turnover went down considerably in the *electrical and electronic equipment; machine equipment* (-2.7%), after a growth in April (+0.9%). It plunged in the manufacture of computer, electronic and optical products (-5.1%) and in the manufacture of electrical equipment (-3.2%). It dropped in the manufacture of machinery and equipment n.e.c. (-1.2%).

Slight fall in transport equipment (-0.2%)

The turnover went down slightly in the *manufacture of transport equipment* (-0.2%) after a sharp decrease in April (-1.9%). It declined significantly in the *manufacture of motor vehicles, trailers and semi-trailers* (-2.0%). Conversely, it climbed in the *manufacture of other transport equipment* (+1.1%). Exports fell dramatically (-3.4%).

Rebound in coke and refined petroleum products (+7.0%)

The turnover recovered dramatically in the *manufacture of coke and refined petroleum products* (+7.0%) after a two-month-in-a-row fall.

• Revisions: -0.3 point in April

In the *manufacturing industry*, the change of the turnover is revised at -0.2%, instead of +0.1% calculated previously.

Indexes of turnover in industry and construction

SA-WDA, based year 2010

Nace classification	Weight*	May 2014	Change in %		
			May/ Apr.	Apr./ Mar.	q-o-q (1)
BE: INDUSTRY	10000	107.5	-1.1	-0.2	-1.1
CZ: MANUFACTURING	8373	107.6	-1.4	-0.2	-0.7
of which Exports	2731	102.2	-3.0	1.9	-0.1
(C1): Man. of food products and beverages	1647	113.7	-2.7	2.5	0.0
of which Exports	284	116.1	-5.9	3.8	-1.0
(C2): Man. of coke and refined petroleum products	478	124.2	7.0	-3.3	-3.9
(C3): Electrical and electronic equipment; machine equipment	1005	103.5	-2.7	0.9	-1.3
of which Exports	483	100.7	-3.5	-1.2	1.3
[CI] Man. of computer, electronic and optical products	269	97.4	-5.1	6.7	-2.1
[CJ] Man. of electrical equipment	302	98.1	-3.2	-2.9	-0.7
[CK] Man. of machinery and equipment n.e.c.	434	111.1	-1.2	0.2	-1.3
(C4): Man. of transport equipment	1428	107.8	-0.2	-1.9	1.4
of which Exports	693	92.8	-3.4	9.0	-1.0
[CL1] Man. of motor vehicles, trailers and semi-trailers	689	89.6	-2.0	-0.4	-2.4
[CL2] Man. of other transport equipment	739	124.8	1.1	-2.9	4.3
(C5): Other manufacturing	3815	103.9	-2.0	-0.6	-1.1
of which Exports	1213	103.7	-2.4	-0.6	-0.3
[CB] Man. of textiles, wearing apparel, leather and related products	191	109.2	-1.1	0.0	0.2
[CC] Man. of wood and paper products; printing and reproduction of recorded media	427	99.8	-1.4	-0.5	-1.1
[CE] Man. of chemicals and chemical products	706	104.4	-1.9	-0.4	-1.8
[CF] Man. of basic pharmaceutical products and pharmaceutical preparations	322	98.5	-2.5	0.3	1.9
[CG] Man. of rubber and plastics products, and other non-metallic mineral products	620	101.2	-3.5	-0.8	-1.8
[CH] Man. of basic metals and fabricated metal products, except machinery and equipment	900	103.2	-1.8	-0.6	-1.7
[CM] Other manufacturing; repair and installation of machinery and equipment	649	110.9	-1.4	-0.9	-0.7
DE: Mining and quarrying; energy, water supply, sewerage, waste management	1627	106.5	0.1	-0.3	-3.7
[BZ] Mining and quarrying	69	104.2	-3.1	0.3	-2.3
[DZ] Electricity, gas, steam and air-conditioning supply	1216	107.9	0.6	-0.7	-4.1
[EZ] Water supply; sewerage, waste management and remediation	342	102.2	-0.8	1.3	-2.3
FZ: CONSTRUCTION	10000	106.6	-0.5	0.3	0.4

** 10000=B...E and F

(1) Quarter-on-quarter: last three months / previous three months

Source: INSEE

Measure of variations' revisions

(in point %)

	Apr./ Mar.	Mar./ Feb.	Feb./ Jan.	Q1 2014/ Q4 2013	2013/ 2012
Industry (BE)	-0.46	0.00	-0.09	-0.12	-0.02
raw serie	-0.27	0.00	0.00	0.00	0.00
SA-WDA coeff.	-0.19	0.00	-0.09	-0.12	-0.02
Manufacturing industry (CZ)	-0.27	-0.09	-0.09	-0.18	-0.04
raw serie	0.00	-0.20	0.10	0.00	0.00
SA-WDA coeff.	-0.27	0.11	-0.19	-0.18	-0.04

Foot note: in the manufacturing industry, the SA-WDA change between March and April 2014 is revised by -0.27 point, owed to the recalculation of the SA-WDA coefficients.

Source: INSEE

For further information:

- Complementary data (long series) and metadata (methodology, linked internet pages...) are available on the HTML page of this index: <http://www.insee.fr/fr/themes/info-rapide.asp?id=53>
- Historical data are available on the BDM: [G1444](#), [G1445](#), [G1446](#), [G1447](#), [G1448](#) and [G1529](#)
- Press contact: bureau-de-presse@insee.fr
- Follow us on [Twitter](#) @InseeFr_News

Next issue: August 29th, 2014