

Informations Rapides

30 juin 2014 - n° 154



■ Turnover in industry and construction – April 2014

In April 2014, the turnover in manufacturing industry levelled off compared to March (+0.1%)

Every index in this issue is in value, seasonally and working day adjusted. The commentary shows variations of subsections by decreasing contribution. The contribution of a subsection depends on the extent of the variation and on its weight.

In April 2014, the turnover stabilized in the **manufacturing industry** (+0.1%) after a slight fall in March (–0.4%). Exports rebounded (+2.1%). The turnover increased slightly in the **industry as a whole** (+0.3%).

Rise over the last three months (+0.5%)...

Over the quarter (q-o-q), the turnover grew in the **manufacturing industry** (+0.5%) and fell slightly in the **industry as a whole** (–0.2%).

The turnover went up in *other manufacturing* (+0.5%), mainly in *other manufacturing: repair and installation of machinery and equipment* (+1.6%) and in the *manufacture of basic pharmaceutical products and pharmaceutical preparations* (+1.6%). It grew in the *manufacture of food products and beverages* (+0.9%) and in the *electrical and electronic equipment; machine equipment* (+0.6%). It levelled off in the *manufacture of coke and refined petroleum products* (+0.1%) and in the *manufacture of transport equipment* (–0.1%): the small rise in the *manufacture of other transport equipment* (+0.2%) did not balance the decline in the *manufacture of motor vehicles, trailers and semi-trailers* (–0.5%).

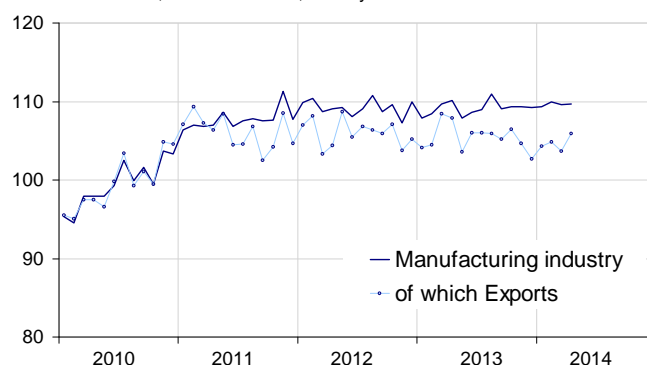
...and over the last year (+0.3%)

Year-on-year, the turnover rose moderately in the **manufacturing industry** (+0.3%).

It grew in *other manufacturing* (+1.0%) and in the *manufacture of food products and beverages* (+1.3%). Conversely, it declined in the *manufacture of transport equipment* (–1.0%) and more significantly in the *manufacture of coke and refined petroleum products* (–2.2%). It went down slightly in the *electrical and electronic equipment; machine equipment* (–0.3%).

Turnover in manufacturing industry

Turnover indexes, value SA-WDA, Base year 2010



Source: INSEE

Variation of the turnover in industry and construction

SA-WDA value, Base year 2010

NA : A 10, (A 17)	Weight**	Change in %			
		Apr./Mar.	Mar./Feb.	q-o-q (1)	y-o-y (2)
BE: INDUSTRY	10000	0.3	–0.5	–0.2	–0.4
CZ: MANUFACTURING	8373	0.1	–0.4	0.5	0.3
<i>Of which Exports</i>	<i>2731</i>	<i>2.1</i>	<i>–1.0</i>	<i>0.9</i>	<i>–2.0</i>
(C1): Manufacture of food products and beverages	1647	2.6	–0.9	0.9	1.3
(C2): Manufacture of coke and refined petroleum products	478	–1.9	–9.4	0.1	–2.2
(C3): Electrical and electronic equipment; machine equipment	1005	1.3	–1.2	0.6	–0.3
(C4): Manufacture of transport equipment	1428	–1.5	3.7	–0.1	–1.0
(C5): Other manufacturing	3815	–0.4	–0.2	0.5	1.0
DE: Mining and quarrying; energy; water supply; waste management	1627	0.7	–0.6	–3.2	–4.0
FZ: CONSTRUCTION	10000	0.4	0.4	0.4	1.4

** 10000=B...E and F

(1) Quarter-on-quarter: last three months / previous three months

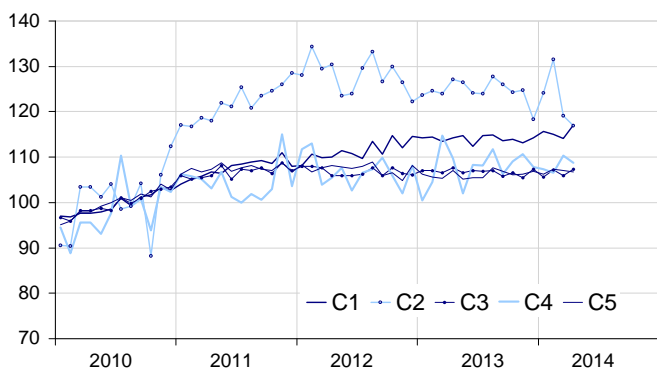
(2) Year-on-year: last three months / same three months of previous year

The codes correspond to different levels of aggregation of the NACE classification.

Source: INSEE

Turnover in manufacturing industry by sector

Turnover indexes, value SA-WDA, Base year 2010



Source: INSEE

In April 2014, the turnover rebounded in food products and beverages (+2.6%)

In April, the turnover increased sharply in the *manufacture of food products and beverages* (+2.6%), after a two-months-in-a-row fall.

Rise in equipments (+1.3%)

In April, the turnover bounced back in the *electrical and electronic equipment; machine equipment* (+1.3%) after a decline in March (-1.2%). It soared in the *manufacture of computer, electronic and optical products* (+7.2%) and it increased significantly in the *manufacture of machinery and equipment n.e.c.* (+1.0%). Conversely, it plunged in the *manufacture of electrical equipment* (-2.9%).

Decline in transport equipment (-1.5%)

The turnover went down in the *manufacture of transport equipment* (-1.5%, after +3.7% in March), owed to the *manufacture of other transport equipment* (-2.7%). It stabilized in the *manufacture of motor vehicles, trailers and semi-trailers* (+0.1%). However, exports recovered dramatically (+9.3%)

Fall again in other manufacturing (-0.4%)

The turnover declined for the second month in a row in *other manufacturing* (-0.4%, after -0.2% in March). It dropped in *other manufacturing: repair and installation of machinery* (-0.8%), in the *manufacture of basic metals and fabricated metal products* (-0.3%) and in the *manufacture of rubber and plastic products, and other non-metallic mineral products* (-0.6%). On the other hand, it rose moderately in the *manufacture of basic pharmaceutical products and pharmaceutical preparations* (+0.5%).

New decrease in coke and refined petroleum products (-1.9%)

The turnover dipped again in the *manufacture of coke and refined petroleum products* (-1.9%, after -9.4% in March).

• Revisions: +0.1 point in March

In the *manufacturing industry*, the evolution of the turnover is revised at -0.4%, instead of -0.5% calculated previously.

Indexes of turnover in industry and construction

SA-WDA, based year 2010

Industries :	Weight*	Apr. 2014	Change in %		
			Apr./ Mar.	Mar./ Feb.	q-o-q (1)
BE: INDUSTRY	10000	109.4	0.3	-0.5	-0.2
CZ: MANUFACTURING	8373	109.7	0.1	-0.4	0.5
of which Exports	2731	105.9	2.1	-1.0	0.9
(C1): Man. of food products and beverages	1647	117.1	2.6	-0.9	0.9
of which Exports	284	123.9	3.9	-2.7	2.2
(C2): Man. of coke and refined petroleum products	478	116.9	-1.9	-9.4	0.1
(C3): Electrical and electronic equipment; machine equipment	1005	107.3	1.3	-1.2	0.6
of which Exports	483	105.6	-0.6	1.3	3.7
[CI] Man. of computer, electronic and optical products	269	103.4	7.2	-3.4	-0.9
[CJ] Man. of electrical equipment	302	101.6	-2.9	1.5	1.3
[CK] Man. of machinery and equipment n.e.c.	434	113.6	1.0	-1.7	0.9
(C4): Man. of transport equipment	1428	108.7	-1.5	3.7	-0.1
of which Exports	693	96.0	9.3	-5.6	-1.7
[CL1] Man. of motor vehicles, trailers and semi-trailers	689	92.2	0.1	-1.3	-0.5
[CL2] Man. of other transport equipment	739	124.0	-2.7	7.4	0.2
(C5): Other manufacturing	3815	106.7	-0.4	-0.2	0.5
of which Exports	1213	106.8	-0.6	0.4	0.9
[CB] Man. of textiles, wearing apparel, leather and related products	191	110.7	0.1	0.2	0.8
[CC] Man. of wood and paper products; printing and reproduction of recorded media	427	101.8	-0.3	-0.7	0.5
[CE] Man. of chemicals and chemical products	706	106.8	-0.2	-0.7	-0.9
[CF] Man. of basic pharmaceutical products and pharmaceutical preparations	322	101.6	0.5	2.7	1.6
[CG] Man. of rubber and plastics products, and other non-metallic mineral products	620	105.6	-0.6	0.1	0.6
[CH] Man. of basic metals and fabricated metal products, except machinery and equipment	900	106.3	-0.3	-0.4	0.2
[CM] Other manufacturing; repair and installation of machinery and equipment	649	112.9	-0.8	-0.9	1.6
DE: Mining and quarrying; energy, water supply, sewerage, waste management	1627	107.6	0.7	-0.6	-3.2
[BZ] Mining and quarrying	69	109.4	1.5	1.0	-0.3
[DZ] Electricity, gas, steam and air-conditioning supply	1216	108.7	0.4	-0.8	-3.2
[EZ] Water supply; sewerage, waste management and remediation	342	103.0	1.3	-0.1	-3.8
FZ: CONSTRUCTION	10000	107.2	0.4	0.4	0.4

** 10000=B...E and F

(1) Quarter-on-quarter: last three months / previous three months

Source: INSEE

Measure of variations' revisions

(in point %)

	Mar./ Feb.	Feb./ Jan.	Jan./ Dec.	Q1 2014/ Q4 2013	2013/ 2012
Industry (BE)	-0.27	0.00	-0.09	-0.18	-0.03
raw serie	-0.65	-0.09	0.00	-0.26	0.00
SA-WDA coeff.	0.38	0.09	-0.09	0.08	-0.03
Manufacturing industry (CZ)	0.09	-0.09	0.00	-0.06	0.02
raw serie	0.20	-0.10	0.00	0.00	0.00
SA-WDA coeff.	-0.11	0.00	0.00	-0.06	0.02

Foot note: in the manufacturing, the SA-WDA evolution between February and March 2014 is revised by +0.09 point: +0.20 point is due to the raw serie's revision and -0.11 point to the new calculation of the SA-WDA.

Source: INSEE

For further information:

- Complementary data (long series) and metadata (methodology, linked internet pages...) are available on the HTML page of this index: <http://www.insee.fr/fr/themes/info-rapide.asp?id=53>
- Historical data are available on the BDM: [G1444](#), [G1445](#), [G1446](#), [G1447](#), [G1448](#) and [G1529](#)
- Press contact: bureau-de-presse@insee.fr
- Follow us on [Twitter](#) @InseeFr_News

Next issue: July 30th, 2014