

# Informations *Rapides*

29 juillet 2013 - n° 179



## ■ Turnover in the retail trade and personal services - May 2013

### In May 2013, the sales volume rose in the retail trade and in accommodation and food service activities

Every index in this issue is in volume, seasonally and working-day adjusted (SA-WDA).

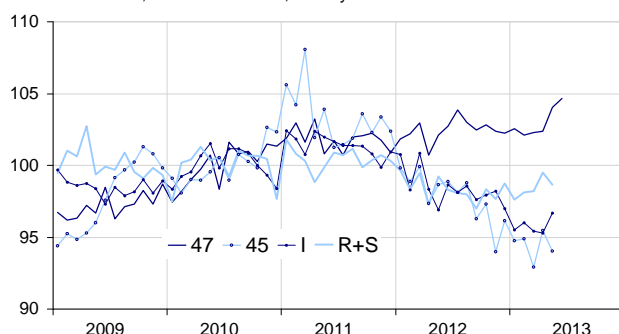
In May 2013, the sales volume grew compared to April in the *retail trade, except for motor vehicles and motorcycles* (+1.6%) and in *accommodation and food service activities* (+1.5%). On the contrary, it fell in the *trade and repair of motor vehicles and motorcycles* (–1.5%) and in *household services* (–0.8%).

Over the last quarter (q-o-q), the sales volume declined in the *trade and repair of motor vehicles and motorcycles* (–1.2%) and, to a lesser extent, in *accommodation and food service activities* (–0.4%). It took off in the *retail trade, except for motor vehicles and motorcycles* (+0.6%) and in *household services* (+0.6%).

Year-on-year (y-o-y), the sales volume declined sharply in the *trade and repair of motor vehicles and motorcycles* (–4.6%) and in *accommodation and food service activities* (–2.9%). It increased in the *retail trade, except for motor vehicles and motorcycles* (+1.0%) and was broadly stable in *household services* (+0.1%).

#### Volume of sales in the retail trade and personal services

Turnover indices, SA-WDA volume, Base year 2010



Please note that the «retail trade, except for motor vehicles and motorcycles» chart (47) includes the early estimate for June 2013.  
Source : INSEE

In June 2013, the sales volume in the retail trade is expected to rise (+0.6%).

#### Revisions

The evolution in April has been revised by –0.5 point in the *trade and repair of motor vehicles and motorcycles*. In the same period, the variation has been revised by –0.1 point in *accommodation and food service activities* and in *household services* and by +0.1 point in the *retail trade, except for motor vehicles and motorcycles*.

#### Variation of sales volume in the retail trade and personal services

SA-WDA volume, Base year 2010

NACE Classification	Weight	Change in %			
		May/ April	April/ March	q-o-q (1)	y-o-y (2)
<b>47 Retail trade, except for motor vehicles and motorcycles</b>	<b>1000</b>	<b>1.6</b>	<b>0.1</b>	<b>0.6</b>	<b>1.0</b>
471 Retail sale in non-specialized stores	369	1.7	–0.9	1.1	0.4
472 to 477 Retail sale in specialized stores	573	1.8	0.6	0.4	1.5
478 and 479 Retail trade not in stores	58	0.0	0.5	–1.0	–1.3
<b>45 Trade and repair of motor vehicles and motorcycles</b>	<b>1000</b>	<b>–1.5</b>	<b>2.7</b>	<b>–1.2</b>	<b>–4.6</b>
<b>I Accommodation and food service activities</b>	<b>1000</b>	<b>1.5</b>	<b>–0.1</b>	<b>–0.4</b>	<b>–2.9</b>
<b>R+S Household services</b>	<b>1000</b>	<b>–0.8</b>	<b>1.3</b>	<b>0.6</b>	<b>0.1</b>
R Arts, entertainment and recreation	449	–1.3	1.6	1.0	0.2
S Other service activities	551	–0.4	1.1	0.3	0.0

(1) Quarter-on-quarter: last three months / three previous months.

(2) Year-on-year: last three months / three same months of the previous year.

Source: INSEE

#### Variation of sales volume in the retail trade : early estimate\*

SA-WDA volume, Base year 2010

	Change in %	
	June 2013/ May 2013	June 2013/ June 2012
<b>47 Retail trade, except for motor vehicles and motorcycles</b>	<b>0.6</b>	<b>1.9</b>

\* Econometric estimate from a set of sources available within 30 days after the end of the reference month

Source: INSEE