

Informations *Rapides*

30 août 2013 - n° 201



■ Turnover in the retail trade and personal services - June 2013

In June 2013, the sales volume decreased in the retail trade, except for motor vehicles and motorcycles, and in personal services

Every index in this issue is in volume, seasonally and working-day adjusted (SA-WDA).

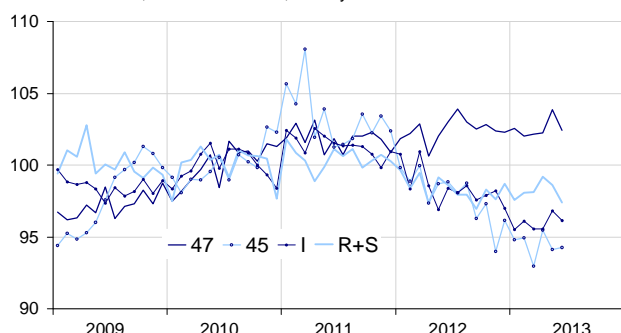
In June 2013, the sales volume declined compared to May in the *retail trade, except for motor vehicles and motorcycles* (−1.4%), in *household services* (−1.2%) and in *accommodation and food service activities* (−0.7%). It was broadly stable in the *trade and repair of motor vehicles and motorcycles* (+0.1%).

Over the second quarter 2013 (q-o-q), the sales volume went up slightly in the *retail trade, except for motor vehicles and motorcycles* (+0.6%), in *accommodation and food service activities* (+0.5%), in *household services* (+0.5%) and in the *trade and repair of motor vehicles and motorcycles* (+0.4%).

Over the year (y-o-y), the sales volume fell significantly in the *trade and repair of motor vehicles and motorcycles* (−3.7%) and in *accommodation and food services activities* (−1.8%). It rose in the *retail trade, except for motor vehicles and motorcycles* (+0.9%) and remained stable in *household services* (0.0%).

Volume of sales in the retail trade and personal services

Turnover indices, SA-WDA volume, Base year 2010



Source : INSEE

In July 2013, the sales volume in the retail trade is expected to rise (+1.9%).

Revisions

The evolution in May has been revised by +0.2 point in *household services*, by −0.2 point in *accommodation and food service activities* and by +0.1 point in the *trade and repair of motor vehicles and motorcycles*. In the same period, the volume of sales' variation has been confirmed in the *retail trade, except for motor vehicles and motorcycles*.

Variation of sales volume in the retail trade and personal services

SA-WDA volume, Base year 2010

NACE Classification	Weight	Change in %			
		June/ May	May/ April	q-o-q (1)	y-o-y (2)
47 Retail trade, except for motor vehicles and motorcycles	1000	−1.4	1.6	0.6	0.9
471 Retail sale in non-specialized stores	369	−1.8	1.8	0.3	−0.3
472 to 477 Retail sale in specialized stores	573	−1.4	1.6	0.9	1.9
478 and 479 Retail trade not in stores	58	0.2	−0.1	−0.2	−0.8
45 Trade and repair of motor vehicles and motorcycles	1000	0.1	−1.4	0.4	−3.7
I Accommodation and food service activities	1000	−0.7	1.3	0.5	−1.8
R+S Household services	1000	−1.2	−0.6	0.5	0.0
R Arts, entertainment and recreation	449	−1.5	−1.3	1.0	−0.8
S Other service activities	551	−1.0	0.0	0.1	0.7

(1) Quarter-on-quarter: last three months / three previous months.

(2) Year-on-year: last three months / three same months of the previous year.

Source : INSEE

Variation of sales volume in the retail trade : early estimate*

SA-WDA volume, Base year 2010

	Change in %	
	July 2013/ June 2013	July 2013/ July 2012
47 Retail trade, except for motor vehicles and motorcycles	1.9	0.5

* Econometric estimate from a set of sources available within 30 days after the end of the reference month

Source : INSEE