

Informations *Rapides*

10 juin 2013 - n° 132

Main indicators



■ Industrial Production Indices – April 2013

In April 2013, manufacturing output increased (+2.6%)

In April 2013, **manufacturing output** increased (+2.6%), as well as **industrial production as a whole** (+2.2%).

During the last three months, manufacturing output increased (+0.8%)...

During the last three months (q-o-q), output increased in the manufacturing sector (+0.8%), as well as in industry as a whole (+0.9%).

Output improved in *other manufacturing* (+0.4%), in the *manufacture of electrical and electronic equipment* (+1.5%), in the *manufacture of transport equipment* (+2.0%). It rose in the *manufacture of coke and refined petroleum products* (+14.7%). On the contrary, output decreased in the *manufacture of food products and beverages* (-1.2%).

...and was lower than its last year's level by 2.3%.

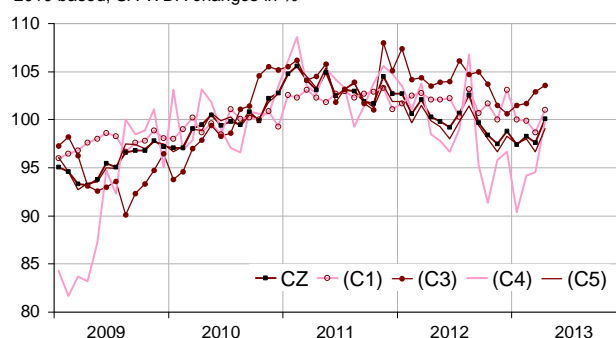
Manufacturing output fell by 2.3% (y-o-y).

Output went down in *other manufacturing* (-2.4%), in the *manufacture of transport equipment* (-4.9%), in the *manufacture of food products and beverages* (-2.5%) and in the *manufacture of electrical and electronic equipment and machine equipment* (-1.2%). On the opposite, manufacturing output bounced by 12.9% in the *manufacture of coke and refined petroleum products*.

Please note: all the series are adjusted for seasonal variations (SA) and the number of working days (WDA).

Monthly industrial Production indexes

2010 based, SA-WDA changes in %



Legend : CZ : Manufacturing - (C1) : Manufacture of food products and beverages - (C3) : Electrical and electronic equipment; machine equipment - (C4) : Manufacture of transport equipment - (C5) : Other manufacturing

Sources : Insee, SSP, SOeS

Variation of the Industrial Production

2010 based, SA-WDA changes in %

NA : A10. (A17)	April / March	March / Feb.	Q-o-Q change	Year on year change (1)
BE: INDUSTRY	2.2	-0.6	0.9	-1.8
CZ: Manufacturing	2.6	-0.7	0.8	-2.3
(C1): Manufacture of food products and beverages	2.3	-1.2	-1.2	-2.5
(C2): Manufacture of coke and refined petroleum products	1.6	-2.7	14.7	12.9
(C3): Electrical and electronic equipment; machine equipment	0.7	1.2	1.5	-1.2
(C4): Manufacture of transport equipment	5.7	0.3	2.0	-4.9
(C5): Other manufacturing	2.5	-1.3	0.4	-2.4
(DE): Mining and quarrying; energy; water supply; waste management	1.1	-0.2	1.4	0.7
FZ: CONSTRUCTION	0.2	-0.4	-1.5	-1.1

(1) Last three months / three previous months

(2) Last three months / three same months of previous year

The codes correspond to the level of aggregation A 10 (A 17) of the "NA" aggregate classification based on NAF rev.2.

Sources : INSEE, SSP, SOeS

Variation of the Industrial Production

2010 based, SA-WDA changes in %

NA : A10. (A17). [A38 ou A64]	April 2013	April / March	March / Feb.	Quarter on quarter change
BE: INDUSTRY	100.0	2.2	-0.6	0.9
CZ: Manufacturing	100.1	2.6	-0.7	0.8
(C1): Man. of food products and beverages	101.0	2.3	-1.2	-1.2
(C2): Man. of coke and refined petroleum products	95.2	1.6	-2.7	14.7
(C3): Electrical and electronic equipment; machine equipment	103.6	0.7	1.2	1.5
[CI] Man. of computer, electronic and optical products	107.8	0.7	4.7	6.7
[CJ] Man. of electrical equipment	99.4	0.1	1.1	2.1
[CK] Man. of machinery and equipment n.e.c. (1)	103.7	1.0	-0.8	-1.6
(C4): Man. of transport equipment	99.9	5.7	0.3	2.0
[CL1] Man. of motor vehicles, trailers and semi-trailers	89.2	4.6	4.3	1.5
[CL2] Man. of other transport equipment	112.1	7.0	-3.1	2.5
(C5): Other manufacturing	99.1	2.5	-1.3	0.4
[CB] Man. of textiles, wearing apparel, leather and related products	96.7	4.4	-2.0	-5.6
[CC] Man. of wood and paper products; printing and reproduction of recorded media	90.8	0.7	-1.2	0.3
[CE] Man. of chemicals and chemical products	109.0	2.5	-1.7	-0.6
[CF] Man. of basic pharmaceutical products and pharmaceutical preparations	102.0	0.6	1.0	2.4
[CG] Man. of rubber and plastics products, and other non-metallic mineral products	95.9	2.2	-0.6	0.7
[CH] Man. of basic metals and fabricated metal products, except machinery and equipment	97.9	3.1	-2.1	1.4
[CM] Other manufacturing; repair and installation of machinery and equipment	101.4	3.0	-1.2	-0.2
(DE): Mining and quarrying; energy; water supply; waste management	99.8	1.1	-0.2	1.4
[BZ] Mining and quarrying	96.4	1.7	0.5	-1.8
[DZ] Electricity, gas, steam and air-conditioning supply	99.5	1.0	-0.2	1.7
[EZ] Water supply; sewerage, waste management and remediation	104.1	2.4	-0.6	0.9
FZ: CONSTRUCTION	95.2	0.2	-0.4	-1.5
MIGs (2)				
Capital goods	101.4	3.2	0.0	0.5
Intermediate goods	97.9	2.4	-1.1	1.0
Consumer durables	103.7	1.4	-1.0	1.3
Consumer non-durables	101.8	1.8	-0.6	-0.3

(1) n.e.c. : not elsewhere classifiable

(2) Main industrial groupings : definition in Commission regulation EC of 14 June 2007

Sources : Insee, SSP, SOeS

In April, output went up in "other manufacturing" (+2.5%)...

Output went up in the *manufacture of basic metals and fabricated metal products, except machinery and equipment* (+3.1%), in *other manufacturing, repair and installation of machinery and equipment* (+3.0%), in the *manufacture of rubber and plastics products and other non-metallic mineral products* (+2.2%), in the *manufacture of chemicals and chemical products* (+2.5%), in the *manufacture of textiles, wearing apparel, leather and related products* (+4.4%) and, to a smaller extent, in the *manufacture of wood and paper products; printing and reproduction of recorded media* (+0.7%) as well as in the *manufacture of basic pharmaceutical products and pharmaceutical preparations* (+0.6%).

... in the manufacture of transport equipment (+5.7%)...

Output increased sharply in the *manufacture of other transport equipment* (+7.0% in April) and in the *manufacture of motor vehicles, trailers and semi-trailers* (+4.6%).

...in the manufacture of food products and beverages (+2.3%)...

Output improved by 2.3% in the *manufacture of food products and beverages*.

...and in the manufacture of electrical and electronic equipment, machine equipment (+0.7%).

Output increased slightly in the *manufacture of machinery and equipment n.e.c.* (+1.0%), in the *manufacture of computer, electronic and optical product* (+0.7%) and remained almost stable in the *manufacture of electrical equipment* (+0.1%).

• Revisions in March

Measure of variations' revisions

(in point %)

	March / Feb.	Feb. / Jan.	Jan. / Dec.	Q1 2013 / Q4 2012	2012 / 2011
Industry (BE)	0.31	0.10	0.00	0.31	-0.05
raw serie	0.30	0.00	0.00	0.13	-0.06
SA-WDA coefficient	0.01	0.10	0.00	0.18	0.01
Manufacturing (CZ)	0.31	0.10	0.10	0.41	-0.09
raw serie	0.43	-0.10	0.12	0.13	-0.07
SA-WDA coefficient	-0.12	0.20	-0.02	0.28	-0.02

Note of reading : in the manufacturing, the SA-WDA evolution between February 2013 and March 2013 is revised by +0.31 point : +0.43 is due to the raw serie's revision and -0.12 to the new calculation of the SA-WDA.

Sources : Insee, SSP, SOeS

Learn more:

- Complementary data (long series) and metadata (methodology, linked internet pages...) are available on the HTML page of this index: <http://www.insee.fr/en/themes/info-rapide.asp?id=10>
- Historical data are available on the BDM: [G950](#), [G951](#), [G952](#), [G953](#), [G963](#).
- Press contact: bureau-de-presse@insee.fr

Next issue: July 10 2013, 8:45 AM