

# Informations Rapides

9 août 2013 - n° 185

Main indicators



## Industrial Production Indices - June 2013

### In June 2013, manufacturing output decreased slightly (-0.4%)

In June 2013, compared to May, **manufacturing output** decreased (-0.4%). **Industrial production as a whole** decreased in a more sustained pace (-1.4%).

#### **During the last quarter, manufacturing output increased by 1.5%...**

During the last quarter (q-o-q), output increased in the manufacturing sector (+1.5%), as well as in industry as a whole (+1.4%).

Output increased sharply in the *manufacture of transport equipment* (+7.8%). It improved in *other manufacturing* (+0.6%), in the *manufacture of electrical and electronic equipment; machine equipment* (+1.1%) and in the *manufacture of coke and refined petroleum products* (+3.7%). Output was stable in the *manufacture of food products and beverages*.

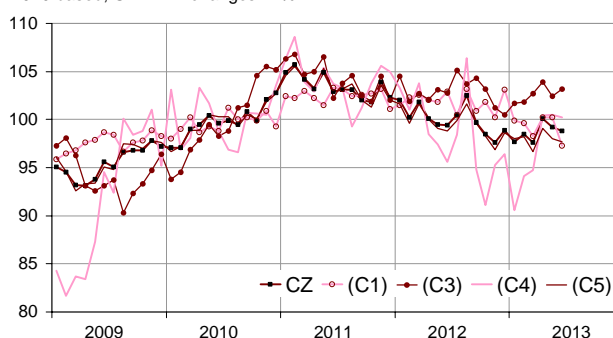
#### **...and was lower than its last year's level by 0.3%**

Manufacturing output decreased by 0.3% (y-o-y). Output went down in *other manufacturing* (-1.0%) and in the *manufacture of food products and beverages* (-2.9%). On the opposite, output increased in the *manufacture of transport equipment* (+3.3%), sharply in the *manufacture of coke and refined petroleum products* (+11.8%) and slightly in the *manufacture of electrical and electronic equipment; machine equipment* (+0.5%).

Please note: all the series are adjusted for seasonal variations (SA) and the number of working days (WDA).

#### Monthly industrial Production indexes

2010 based, SA-WDA changes in %



Legend : CZ : Manufacturing - (C1) : Manufacture of food products and beverages - (C3) : Electrical and electronic equipment; machine equipment - (C4) : Manufacture of transport equipment - (C5) : Other manufacturing  
Sources : Insee, SSP, SOeS

#### Variation of the Industrial Production

2010 based, SA-WDA changes in %

	June / May	May / April	Q-o-Q change	Year on year change (1)
<b>NA : A10, (A17)</b>	<b>-1.4</b>	<b>-0.3</b>	<b>1.4</b>	<b>0.2</b>
<b>BE: INDUSTRY</b>	<b>-0.4</b>	<b>-0.9</b>	<b>1.5</b>	<b>-0.3</b>
<b>CZ: Manufacturing</b>				
(C1): Manufacture of food products and beverages	-2.9	0.0	0.0	-2.9
(C2): Manufacture of coke and refined petroleum products	0.0	-2.2	3.7	11.8
(C3): Electrical and electronic equipment; machine equipment	0.8	-1.4	1.1	0.5
(C4): Manufacture of transport equipment	-0.3	0.1	7.8	3.3
(C5): Other manufacturing	-0.3	-1.1	0.6	-1.0
(DE): Mining and quarrying; energy; water supply; waste management	-5.4	2.3	1.3	2.4
<b>FZ: CONSTRUCTION</b>	<b>0.0</b>	<b>-0.8</b>	<b>1.2</b>	<b>-3.5</b>

(1) Last three months / three previous months  
(2) Last three months / three same months of previous year  
The codes correspond to the level of aggregation A 10 (A 17) of the "NA" aggregate classification based on NAF rev.2.  
Sources : INSEE, SSP, SOeS

## Variation of the Industrial Production

2010 based, SA-WDA changes in %

NA : A10, (A17), [A38 or A64]	June			Quarter
	2013	May	April	on quarter change
<b>BE: INDUSTRY</b>	<b>98.5</b>	<b>-1.4</b>	<b>-0.3</b>	<b>1.4</b>
<b>CZ: Manufacturing</b>	<b>98.8</b>	<b>-0.4</b>	<b>-0.9</b>	<b>1.5</b>
<b>(C1): Man. of food products and beverages</b>	<b>97.3</b>	<b>-2.9</b>	<b>0.0</b>	<b>0.0</b>
<b>(C2): Man. of coke and refined petroleum products</b>	<b>94.0</b>	<b>0.0</b>	<b>-2.2</b>	<b>3.7</b>
<b>(C3): Electrical and electronic equipment; machine equipment</b>	<b>103.2</b>	<b>0.8</b>	<b>-1.4</b>	<b>1.1</b>
[CI] Man. of computer, electronic and optical products	104.4	1.1	-2.0	1.0
[CJ] Man. of electrical equipment	96.1	-0.4	-2.6	-0.4
[CK] Man. of machinery and equipment n.e.c. (1)	106.9	1.3	-0.5	1.9
<b>(C4): Man. of transport equipment</b>	<b>100.2</b>	<b>-0.3</b>	<b>0.1</b>	<b>7.8</b>
[CL1] Man. of motor vehicles, trailers and semi-trailers	86.9	-5.7	3.1	9.2
[CL2] Man. of other transport equipment	115.1	4.7	-2.6	6.5
<b>(C5): Other manufacturing</b>	<b>97.7</b>	<b>-0.3</b>	<b>-1.1</b>	<b>0.6</b>
[CB] Man. of textiles, wearing apparel, leather and related products	98.8	-0.5	1.0	3.2
[CC] Man. of wood and paper products; printing and reproduction of recorded media	90.7	-0.4	-0.5	-0.4
[CE] Man. of chemicals and chemical products	106.7	-0.3	-0.6	0.3
[CF] Man. of basic pharmaceutical products and pharmaceutical preparations	103.0	-0.2	0.2	1.9
[CG] Man. of rubber and plastics products, and other non-metallic mineral products	95.8	1.2	-1.8	1.5
[CH] Man. of basic metals and fabricated metal products, except machinery and equipment	96.0	-0.7	-0.7	0.9
[CM] Other manufacturing; repair and installation of machinery and equipment	98.0	-0.8	-2.7	-0.6
<b>(DE): Mining and quarrying; energy; water supply; waste management</b>	<b>97.3</b>	<b>-5.4</b>	<b>2.3</b>	<b>1.3</b>
[BZ] Mining and quarrying	91.6	-0.9	-3.5	-0.6
[DZ] Electricity, gas, steam and air-conditioning supply	96.0	-6.8	3.3	1.3
[EZ] Water supply; sewerage, waste management and remediation	109.2	2.2	-1.8	1.4
<b>FZ: CONSTRUCTION</b>	<b>95.8</b>	<b>0.0</b>	<b>-0.8</b>	<b>1.2</b>
<b>MIGs (2)</b>				
Capital goods	100.7	0.1	-1.1	2.6
Intermediate goods	95.8	-0.5	-1.3	0.7
Consumer durables	101.1	0.3	-4.0	-0.4
Consumer non-durables	100.9	-1.2	0.3	1.0

(1) n.e.c. : Not elsewhere classifiable

(2) Main industrial groupings: definition in Commission regulation EC of 14 June 2007

Sources: Insee, SSP, SOeS

## In June, output dropped in the manufacture of food products and beverages (-2.9%).

Output dropped in the manufacture of food products and beverages (-2.9%).

## Output declined slightly in "other manufacturing" (-0.3%)...

Output went down in the manufacture of basic metals and fabricated metal products, except machinery and equipment (-0.7%), in other manufacturing, repair and installation of machinery and equipment (-0.8%), in the manufacture of wood and paper products; printing and reproduction of recorded media (-0.4%), in the manufacture of chemicals and chemical products (-0.3%), in the manufacture of textiles, wearing apparel, leather and related products (-0.5%) and in the manufacture of basic pharmaceutical products and pharmaceutical preparations (-0.2%). On the contrary, output increased in the manufacture of rubber and plastics products and other non-metallic mineral products (+1.2%).

## ...and in the manufacture of transport equipment (-0.3%).

Output decreased by 5.7% in the manufacture of motor vehicles, trailers and semi-trailers but bounced by 4.7% in the manufacture of other transport equipment.

## On the other hand, output increased in the manufacture of electrical and electronic equipment, machine equipment (+0.8%).

Output increased in the manufacture of machinery and equipment n.e.c. (+1.3%) and in the manufacture of computer, electronic and optical product (+1.1%), while it declined in the manufacture of electrical equipment (-0.4%).

## • Revisions in May

### Measure of variations' revisions

(in point %)

	May / April	April / March	March / Feb.	Q1 2013 / Q4 2012	2012 / 2011
<b>Industry (BE)</b>	<b>0.10</b>	<b>0.10</b>	<b>-0.20</b>	<b>0.31</b>	<b>-0.11</b>
raw series	-0.09	-0.08	-0.13	0.50	-0.10
SA-WDA coefficient	0.19	0.18	-0.07	-0.19	-0.01
<b>Manufacturing (CZ)</b>	<b>0.20</b>	<b>0.00</b>	<b>-0.10</b>	<b>0.27</b>	<b>-0.13</b>
raw series	-0.19	0.00	-0.24	0.43	-0.14
SA-WDA coefficient	0.39	0.00	0.14	-0.16	0.01

Note of reading: in the manufacturing, the SA-WDA evolution between April 2013 and May 2013 is revised by 0.20 point: -0.19 is due to the raw series' s revision and +0.39 to the new calculation of the SA-WDA.

Sources: Insee, SSP, SOeS

## Learn more:

- Complementary data (long series) and metadata (methodology, linked internet pages...) are available on the HTML page of this index: <http://www.insee.fr/en/themes/info-rapide.asp?id=10>
- Historical data are available on the BDM: [G950](#), [G951](#), [G952](#), [G953](#), [G963](#).
- Press contact: [bureau-de-presse@insee.fr](mailto:bureau-de-presse@insee.fr)

Next issue: September 10 2013, 8:45 AM