

# Informations Rapides

10 janvier 2014 - n°5

Main indicators



## Industrial Production Indices – November 2013

### In November 2013, manufacturing output increased slightly (+0.2%)

In November 2013, **manufacturing output** increased slightly (+0.2%, after +0.3% in October). Output increased stronger in **industrial production as a whole** (+1.3%, after –0.5% last month).

**During the last three months, manufacturing output was almost stable (+0.1%)...**

During the last three months (q-o-q), output was almost stable in the manufacturing sector (+0.1%), as well as in industry as a whole (–0.1%).

Output increased in the *manufacture of electrical and electronic equipment; machine equipment* (+1.3%) and in the *manufacture of transport equipment* (+1.3%). Meanwhile, output slumped by 9.4% in the *manufacture of coke and refined petroleum products* and maintained in *other manufacturing* (–0.2%).

**...and was higher than its last year's level by 0.3%.**

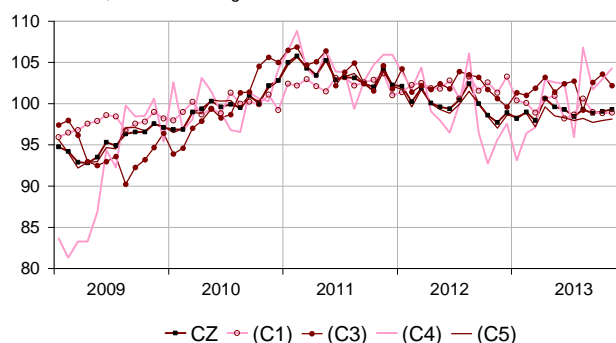
Manufacturing output improved by 0.3% (y-o-y).

Output soared in the *manufacture of transport equipment* (+8.5%). Output improved to a lesser extent in the *manufacture of electrical and electronic equipment; machine equipment* (+0.9%). On the opposite, output declined in the *manufacture of food products and beverage* (–2.9%) as well as in *other manufacturing* (–0.5%). It decreased strongly in the *manufacture of coke and refined petroleum products* (–7.6%).

*Please note: all the series are adjusted for seasonal variations (SA) and the number of working days (WDA).*

### Monthly Industrial Production Indices

2010 based, SA-WDA changes in %



Legend: CZ: Manufacturing - (C1): Manufacture of food products and beverages - (C3): Electrical and electronic equipment; machine equipment - (C4): Manufacture of transport equipment - (C5): Other manufacturing  
Sources: Insee, SSP, SOeS

### Variation of the Industrial Production

2010 based, SA-WDA changes in %

	Nov. /	Oct. /	Q-o-Q change (1)	Year on year change (2)
NA : A10, (A17)	Oct.	Sept.		
<b>BE: INDUSTRY</b>	<b>1.3</b>	<b>–0.5</b>	<b>–0.1</b>	<b>0.1</b>
<b>CZ: Manufacturing</b>	<b>0.2</b>	<b>0.3</b>	<b>0.1</b>	<b>0.3</b>
(C1): Manufacture of food products and beverages	0.1	–0.2	–0.3	–2.9
(C2): Manufacture of coke and refined petroleum products	22.2	–13.3	–9.4	–7.6
(C3): Electrical and electronic equipment; machine equipment	–1.4	1.0	1.3	0.9
(C4): Manufacture of transport equipment	1.3	1.3	1.3	8.5
(C5): Other manufacturing	0.1	0.3	–0.2	–0.5
(DE): Mining and quarrying; energy; water supply; waste management	6.3	–4.2	–0.9	–0.7
<b>FZ: CONSTRUCTION</b>	<b>0.1</b>	<b>–0.3</b>	<b>–0.2</b>	<b>–0.2</b>

(1) Last three months / three previous months

(2) Last three months / three same months of previous year

The codes correspond to the level of aggregation A 10 (A 17) of the "NA" aggregate classification based on NAF rev.2.

Sources: INSEE, SSP, SOeS

## Variation of the Industrial Production

2010 based, SA-WDA changes in %

NA : A10, (A17), [A38 ou A64]	Nov. 2013	Nov. / Oct.	Oct. / Sept.	Quarter on quarter change
<b>BE: INDUSTRY</b>	<b>99.3</b>	<b>1.3</b>	<b>-0.5</b>	<b>-0.1</b>
<b>CZ: Manufacturing</b>	<b>99.3</b>	<b>0.2</b>	<b>0.3</b>	<b>0.1</b>
(C1): Man. of food products and beverages	98.9	0.1	-0.2	-0.3
(C2): Man. of coke and refined petroleum products	86.0	22.2	-13.3	-9.4
(C3): Electrical and electronic equipment; machine equipment	102.2	-1.4	1.0	1.3
[CI] Man. of computer, electronic and optical products	103.3	-2.4	2.5	4.1
[CJ] Man. of electrical equipment	94.4	-2.2	-0.1	-0.6
[CK] Man. of machinery and equipment n.e.c. (1)	106.4	-0.2	0.6	1.0
(C4): Man. of transport equipment	104.3	1.3	1.3	1.3
[CL1] Man. of motor vehicles, trailers and semi-trailers	89.8	2.7	0.7	2.3
[CL2] Man. of other transport equipment	120.7	0.2	1.7	0.4
(C5): Other manufacturing	98.1	0.1	0.3	-0.2
[CB] Man. of textiles, wearing apparel, leather and related products	96.7	-0.7	1.7	0.2
[CC] Man. of wood and paper products; printing and reproduction of recorded media	89.7	2.0	-1.2	-1.6
[CE] Man. of chemicals and chemical products	109.3	1.9	0.2	1.8
[CF] Man. of basic pharmaceutical products and pharmaceutical preparations	100.2	0.9	0.7	0.3
[CG] Man. of rubber and plastics products, and other non-metallic mineral products	94.6	1.2	-1.2	-0.7
[CH] Man. of basic metals and fabricated metal products, except machinery and equipment	96.5	-1.0	0.9	-0.7
[CM] Other manufacturing; repair and installation of machinery and equipment	100.8	-1.3	1.1	0.0
(DE): Mining and quarrying; energy; water supply; waste management	99.2	6.3	-4.2	-0.9
[BZ] Mining and quarrying	96.6	0.4	0.5	-3.5
[DZ] Electricity, gas, steam and air-conditioning supply	98.8	8.1	-4.7	-0.3
[EZ] Water supply; sewerage, waste management and remediation	103.7	-1.8	-2.8	-3.1
<b>FZ: CONSTRUCTION</b>	<b>96.8</b>	<b>0.1</b>	<b>-0.3</b>	<b>-0.2</b>
<b>MIGs (2)</b>				
Capital goods	102.7	-0.4	1.1	0.5
Intermediate goods	96.7	0.1	0.4	0.1
Consumer durables	98.6	0.4	-0.8	0.8
Consumer non-durables	100.2	0.4	-0.1	-0.3

(1) n.e.c. : not elsewhere classifiable

(2) Main industrial groupings: definition in Commission regulation EC of June 14<sup>th</sup> 2007

Sources: Insee, SSP, SOeS

**In November 2013, output rebounded in « Mining and quarrying; energy; water supply; waste management » (+6.3% after -4.2%)...**

In particular, output rebounded in *electricity, gas, steam and air-conditioning supply* (+8.1%), after the clement climate in October.

**... as well as in the manufacture of coke and refined petroleum products (+22.2%).**

Output rebounded by 22.2% in the *manufacture of coke and refined petroleum products* due to the resumption of a refinery.

**Output improved by 1.3% in the manufacture of transport equipment...**

Output increased in the *manufacture of motor vehicles, trailers and semi-trailers* (+2.7%) and maintained in the *manufacture of other transport equipment* (+0.2%).

**...and was almost stable in other manufacturing (+0.1%).**

Output went up in the *manufacture of chemicals and chemical products* (+1.9%), in the *manufacture of rubber and plastics products, and other non-metallic mineral products* (+1.2%), in the *manufacture of wood and paper products; printing and reproduction of recorded media* (+2.0%) as well as in the *manufacture of basic pharmaceutical products and pharmaceutical preparations* (+0.9%).

However, output decreased in the *manufacture of basic metals and fabricated metal products, except machinery and equipment* (-1.0%), in *other manufacturing, repair and installation of machinery and equipment* (-1.3%) and in the *manufacture of textiles, wearing apparel, leather and related products* (-0.7%).

**Output decreased in the manufacture of electrical and electronic equipment; machine equipment (-1.4%).**

Output declined significantly in the *manufacture of computer, electronic and optical products* (-2.4%), in the *manufacture of electrical equipment* (-2.2%) and maintained in the *manufacture of machinery and equipment n.e.c.* (-0.2%).

### • Revisions in October

#### Measure of variations' revisions

(in point %)

	Oct. / Sept.	Sept. / Aug.	Aug. / July	Q3 2013 / Q2 2013	2012 / 2011
<b>Industry (BE)</b>	<b>-0.20</b>	<b>-0.10</b>	<b>0.00</b>	<b>-0.03</b>	<b>-0.01</b>
raw serie	-0.19	0.05	-0.10	-0.07	0.00
SA-WDA coefficient	-0.01	-0.15	0.10	0.04	-0.01
<b>Manufacturing (CZ)</b>	<b>-0.10</b>	<b>0.00</b>	<b>0.00</b>	<b>0.00</b>	<b>0.01</b>
raw serie	-0.19	0.20	-0.09	0.00	0.00
SA-WDA coefficient	0.09	-0.20	0.09	0.00	0.01

Note of reading: in the manufacturing, the SA-WDA evolution between September 2013 and October 2013 is revised by -0.10 point: -0.19 is due to the raw serie's revision and 0.09 to the new calculation of the SA-WDA..

Sources: Insee, SSP, SOeS

#### Learn more:

- Complementary data (long series) and metadata (methodology, linked internet pages...) are available on the HTML page of this index: <http://www.insee.fr/en/themes/info-rapide.asp?id=10>
- Historical data are available on the BDM: [G950](#). [G951](#). [G952](#). [G953](#). [G963](#).
- Press contact: [bureau-de-presse@insee.fr](mailto:bureau-de-presse@insee.fr)

Next issue: February 10 2014, 8:45 AM