

# Informations Rapides

30 août 2013 - n° 200



## ■ Turnover in the wholesale trade and business services - June 2013

### In June 2013, the turnover fell in the wholesale trade and business services

Every index in this issue is in value, seasonally and working-day adjusted (SA-WDA).

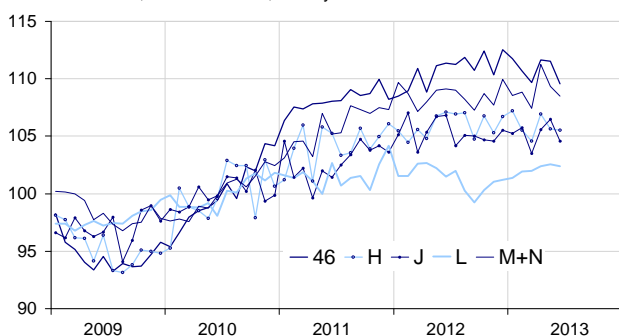
In June 2013, the turnover went down in the *wholesale trade, except for motor vehicles and motorcycles* (–1.8%), in *information and communication* (–1.8%), in *business support activities* (–0.8%) and, to a lesser extent, in *real estate activities* (–0.2%). It was broadly stable in *transportation and storage* (–0.1%).

Over the second quarter 2013 (q-o-q), the turnover rose in *business support activities* (+1.3%), in *information and communication* (+0.7%) and in *real estate activities* (+0.7%). It grew slightly in *transportation and storage* (+0.3%) and was broadly steady in the *wholesale trade, except for motor vehicles and motorcycles* (+0.2%).

Over the year (y-o-y), the turnover increased in *business support activities* (+0.9%), in the *wholesale trade, except for motor vehicles and motorcycles* (+0.4%) and in *real estate activities* (+0.3%). At the opposite, it declined in *information and communication* (–0.7%). It was broadly stable in *transportation and storage* (–0.2%).

#### Wholesale trade and business services

Turnover indices, SA-WDA value, Base year 2010



Source : INSEE

#### Revisions

The evolution in May has been revised by –0.3 point in *business support activities*, by +0.1 point in *transportation and storage* and in *information and communication* and by –0.1 point in *real estate activities*. In the same period, the variation has been confirmed in the *wholesale trade, except for motor vehicles and motorcycles*.

#### Variation of the turnover in the wholesale trade and business services

SA-WDA value, Base year 2010

Nace classification	Weight	Change in %			
		June/ May	May/ April	q-o-q (1)	y-o-y (2)
<b>46 Wholesale trade, except for motor vehicles and motorcycles</b>	<b>1000</b>	<b>–1.8</b>	<b>–0.1</b>	<b>0.2</b>	<b>0.4</b>
<b>H Transportation and storage</b>	<b>1000</b>	<b>–0.1</b>	<b>–1.2</b>	<b>0.3</b>	<b>–0.2</b>
<b>J Information and communication</b>	<b>1000</b>	<b>–1.8</b>	<b>0.8</b>	<b>0.7</b>	<b>–0.7</b>
<b>L Real estate activities</b>	<b>1000</b>	<b>–0.2</b>	<b>0.2</b>	<b>0.7</b>	<b>0.3</b>
<b>M+N Business support activities</b>	<b>1000</b>	<b>–0.8</b>	<b>–1.7</b>	<b>1.3</b>	<b>0.9</b>
<i>M Professional, scientific and technical activities</i>	579	–1.0	–1.3	1.5	1.6
<i>N Administrative and support service activities</i>	421	–0.5	–2.2	1.1	0.0

(1) Quarter-on-quarter: last three months / three previous months.

(2) Year-on-year: last three months / three same months of the previous year.

Source : INSEE