

■ Turnover in the wholesale trade and business services - March 2014

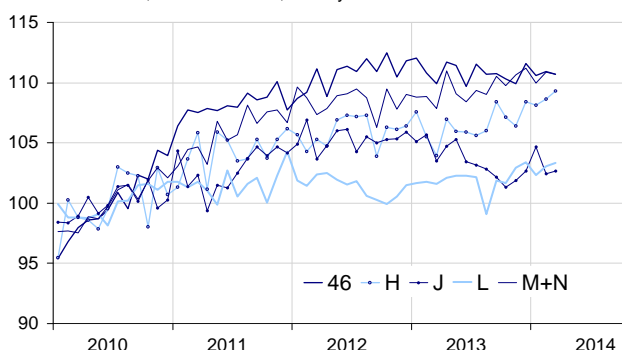
In March 2014, the turnover decreased in the wholesale trade, but improved in transportation and storage

Every index in this issue is in value, seasonally and working day adjusted.
The commentary shows evolutions of subsections by decreasing contributions. The contribution of a subsection depends on the extent of the evolution and on its weight.

In March 2014, the turnover increased in *transportation and storage* (+0.6%). It grew more moderately in *real estate activities* (+0.3%) and in *information and communication* (+0.2%). On the opposite, it declined slightly in the *wholesale trade, except for motor vehicles and motorcycles* (−0.2%). It levelled off in *business support activities* (−0.1%).

Wholesale trade and business services

Turnover indices, SA-WDA value, Base year 2010



Source: INSEE

Slight decrease in the wholesale trade, except for motor vehicles and motorcycles

In March, the turnover declined slightly in the *wholesale trade, except for motor vehicles and motorcycles* (−0.2%) after a slight improvement in February (+0.3%). It plunged in the *wholesale of agricultural raw materials and live animals* (−6.4%) and went down in the *wholesale of household goods* (−1.2%) and in the *wholesale of other machinery, equipment and supplies* (−0.9%). Conversely, the turnover grew in the *other specialised wholesale* (+2.4%), in the *wholesale of information and communication equipment* (+1.3%) and in the *wholesale on a fee or contract basis* (+0.4%). The turnover of the *wholesale trade* was almost stable

over the last quarter (+0.1%, q-o-q), and decreased very slightly over the year (−0.2%, y-o-y).

Further increase in transportation and storage

In March, the turnover of *transportation and storage* grew again (+0.6%, after +0.4% in February). It increased in *land transport and transport via pipelines* (+1.9%) and in *warehousing and support activities for transportation* (+0.8%). It rose slightly in *water transport* (+0.2%). By contrast, it fell in *postal and courier activities* (−5.5%) and in *air transport* (−1.6%). The turnover of *transportation and storage* improved over the last three months (+1.3%, q-o-q), and, to a greater extent, over the year (+2.8%, y-o-y).

Rise in real estate activities

The turnover of *real estate activities* rose again in March (+0.3% after +0.7% in February). It went up very slightly over the last quarter (+0.2%), and more sharply over the year (+1.2%).

Variation of the turnover in the wholesale trade and business services

SA-WDA value, Base year 2010

Nace classification	Weight	Change in %			
		March /Feb.	Feb./ Jan.	q-o-q (1)	y-o-y (2)
46 Wholesale trade, except for motor vehicles and motorcycles	1000	−0.2	0.3	0.1	−0.2
H Transportation and storage	1000	0.6	0.4	1.3	2.8
J Information and communication	1000	0.2	−2.1	1.3	−1.4
L Real estate activities	1000	0.3	0.7	0.2	1.2
M+N Business support activities	1000	−0.1	0.8	0.0	1.8
M Professional, scientific and technical activities	579	−0.6	1.6	−1.1	1.0
N Administrative and support service activities	421	0.5	−0.2	1.4	3.0

(1) Quarter-on-quarter: last three months / three previous months

(2) Year-on-year: last three months / three same months of previous year

The codes correspond to different levels of aggregation of the NACE classification.

Source: INSEE

Slight rebound in information and communication

In March, the turnover recovered slightly in *information and communication* (+0.2% after -2.1% in February). It increased in *publishing activities* (+2.1%), in *information service activities* (+1.6%), in *computer programming, consultancy and related activities* (+0.3%), in *programming and broadcasting activities* (+0.8%) as well as in *motion picture, video and television programme production* (+0.7%). By contrast, the turnover decreased again in *telecommunications* (-1.1%).

The turnover of *information and communication* rose over the last quarter (+1.3%, q-o-q), but decreased over the year (-1.4%, y-o-y).

Near-stability in business support activities

In March, the turnover stabilised in *business support activities* (-0.1%), after an increase in February (+0.8%). The turnover declined in the *professional, scientific and technical activities* (-0.6%); in particular, it dropped in *architectural and engineering activities...* (-2.2%) and in *legal and accounting activities* (-2.5%) but grew in *activities of head offices...* (+0.6%). Conversely, the turnover in *administrative and support service activities* rose by 0.5%: it increased in *employment activities* (+1.5%) and in *office administrative, office support and other business support activities* (+0.5%) but fell in *travel agency, tour operator...* (-2.3%).

The turnover held steady over the last quarter (+0.0%, q-o-q) and improved over the year (+1.8%, y-o-y).

• Revisions

The change in February was revised by -0.8 point in *transportation and storage*. Announced at +1.2%, the turnover was revised at 0.4%. It was revised by -0.1 point in *real estate activities* and by +0.1 point in *information and communication*. It remained unchanged in the *wholesale trade, except for motor vehicles and motorcycles* and in *business support activities*.

Variation of the turnover in the wholesale trade and business services

SA-WDA value, Base year 2010

Nace Classification	Weight	March 2014	Variation en %		
			March /Feb.	Feb./ Jan.	q-o-q (1)
46 Wholesale trade, except for motor vehicles and motorcycles	1000	110.7	-0.2	0.3	0.1
461 Wholesale on a fee or contract basis	152	116.5	0.4	-1.0	-0.7
462 Wholesale of agricultural raw materials and live animals	54	118.2	-6.4	1.6	3.0
463 Wholesale of food, beverages and tobacco	170	111.3	-0.2	-0.1	-0.5
464 Wholesale of household goods	207	105.8	-1.2	2.2	0.3
465 Wholesale of information and communication equipment	61	104.7	1.3	-2.7	3.7
466 Wholesale of other machinery, equipment and supplies	125	113.4	-0.9	1.5	0.4
467 Other specialised wholesale	197	109.0	2.4	-0.3	-1.5
469 Non specialised wholesale trade	34	110.9	0.6	-0.6	3.2
H Transportation and storage	1000	109.3	0.6	0.4	1.3
49 Land transport and transport via pipelines	407	112.6	1.9	0.8	2.1
50 Water transport	73	115.3	0.2	3.0	1.1
51 Air transport	91	102.9	-1.6	-0.7	-1.7
52 Warehousing and support activities for transportation	360	108.7	0.8	-0.2	1.6
53 Postal and courier activities	69	95.0	-5.5	0.6	-1.5
J Information and communication	1000	102.7	0.2	-2.1	1.3
58 Publishing activities	158	104.2	2.1	-2.9	0.3
59 Motion picture, video and television programme production...	76	104.4	0.7	-0.1	2.7
60 Programming and broadcasting activities	61	105.5	0.8	1.6	0.0
61 Telecommunications	396	91.4	-1.1	-4.8	1.6
62 Computer programming, consultancy and related activities	251	116.0	0.3	-0.1	1.5
63 Information service activities	58	112.4	1.6	0.3	0.7
L Real estate activities	1000	103.3	0.3	0.7	0.2
681 Buying and selling of own real estate	96	91.2	-0.6	0.2	5.8
682 Renting and operating of own or leased real estate	691	104.9	0.2	0.5	0.5
683 Real estate activities on a fee or contract basis	213	103.7	0.8	1.5	-2.7
M+N Business support activities	1000	110.7	-0.1	0.8	0.0
M Professional, scientific and technical activities	579	110.1	-0.6	1.6	-1.1
69 Legal and accounting activities	90	107.1	-2.5	5.3	-0.8
70 Activities of head offices...	219	116.2	0.6	0.5	-0.4
71 Architectural and engineering activities...	151	105.9	-2.2	1.0	-3.4
72 Scientific research and development	26	107.5	2.5	3.4	0.3
73 Advertising and market research	68	103.6	0.6	1.0	0.9
74 Other professional, scientific and technical activities	19	111.3	-1.4	2.6	-1.6
75 Veterinary activities	6	114.0	0.4	0.6	1.3
N Administrative and support service activities	421	111.6	0.5	-0.2	1.4
77 Rental and leasing activities	98	110.6	0.3	0.0	1.0
78 Employment activities	80	110.3	1.5	-1.8	1.6
79 Travel agency, tour operator...	42	101.2	-2.3	-1.6	1.7
80 Security and investigation activities	21	116.1	1.0	1.5	2.5
81 Services to buildings and landscape activities	50	110.9	0.9	-1.0	0.5
82 Office administrative, office support and other business support activities	131	115.8	0.5	0.9	1.8

(1) Quarter-on-quarter: last three months / three previous months.

Source: INSEE

For further information :

- Complementary data (long séries) and metadata (methodology, linked internet pages...) are available on the HTML page of the index : <http://www.insee.fr/fr/themes/info-rapide.asp?id=95>
- Historical data are available on BDM : [G1418](#), [G1421](#), [G1423](#), [G1424](#), [G1426](#).
- Press contact : bureau-de-presse@insee.fr

Next publication : June 30th 2014