

Informations Rapides

28 novembre 2012 - n° 292



CONJONCTURE

■ Turnover in the retail trade and personal services - September 2012

In september 2012, the turnover fell in the trade and repair of motor vehicles and motorcycles

Every index in this issue is in volume, seasonally and working-day adjusted.

In September 2012, the turnover declined compared to August in the *trade and repair of motor vehicles and motorcycles* (-2.4%). It also decreased in *household services* (-0.9%), in *accommodation and food service activities* (-0.8%) and, to a lesser extent, in the *retail trade* (-0.4%)

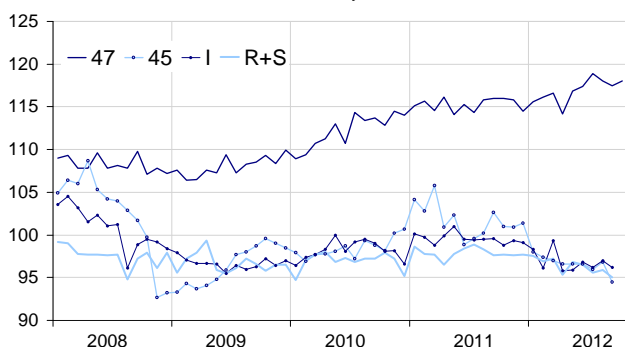
Over the third quarter (q-o-q), the turnover rose in the *retail trade, except for motor vehicles and motorcycles* (+1.7%). It increased slightly in *accommodation and food service activities* (+0.3%) whereas it weakened in the *trade and repair of motor vehicles and motorcycles* (-0.9%) and in *household services* (-0.7%).

Year-on-year, the turnover decreased sharply in the *trade and repair of motor vehicles and motorcycles* (-5.0%), in *accommodation and food services activities* (-3.0%) and in *household services* (-2.8%). On the contrary, it rose in the *retail trade, except for motor vehicles and motorcycles* (+2.4%).

According to our early estimate, the turnover in the *retail trade* is expected to rise in October 2012 (+0.4%).

Turnover in the retail trade and personal services

Turnover indices, SA-WDA volume, Base year 2005



Please note that the «retail trade, except for motor vehicles and motorcycles» chart (47) includes the early estimate for October 2012.

Source : INSEE

Revisions

The SA-WDA evolution in August has been revised by -0.2 point in the *trade and repair of motor vehicles and motorcycles* and by -0.1 point in *accommodation and food service activities*. These variations, announced at +1.0% and +0.9% last month, have been corrected at +0.8%.

Variation of the turnover in the retail trade and personal services

SA-WDA volume, Base year 2005

Classification NAF rev. 2	Weight	Change in %			
		Sept./ Aug.	Aug./ July	q-o-q (1)	y-o-y (2)
47 Retail trade, except for motor vehicles and motorcycles	1000	-0.4	-0.8	1.7	2.4
471 Retail sale in non-specialized stores	415	-0.5	-0.1	0.7	0.8
472 to 477 Retail sale in specialized stores	545	-0.4	-1.2	2.4	3.5
478 and 479 Retail trade not in stores	40	-1.7	1.1	0.1	0.1
45 Trade and repair of motor vehicles and motorcycles	1000	-2.4	0.8	-0.9	-5.0
I Accommodation and food service activities	1000	-0.8	0.8	0.3	-3.0
R+S Household services	1000	-0.9	0.3	-0.7	-2.8
R Arts, entertainment and recreation	472	-0.7	1.2	-1.5	-3.7
S Other service activities	528	-1.3	-0.5	0.0	-2.1

(1) Quarter-on-quarter: last three months / three previous months.

(2) Year-on-year: last three months / three same months of the previous year.

The codes correspond to different levels of aggregation of the classification NAF rev.2.

Source: INSEE

Turnover indices: early estimate*

SA-WDA volume, Base year 2005

	Change in %	
	Oct. 2012/ Sept. 2012	Oct. 2012/ Oct. 2011
47 Retail trade, except for motor vehicles and motorcycles	0.4	1.6

* Econometric estimate from a set of sources available within 30 days after the end of the reference month

Source: INSEE