

# Informations *Rapides*



30 octobre 2012 - n° 270 **CONJONCTURE**

## ■ Turnover in the retail trade and personal services - August 2012

### Except for motor vehicles and motorcycles, in August 2012, the turnover declined in the retail trade

Every index in this issue is in volume, seasonally and working-day adjusted.

In August 2012, the turnover decreased compared to July in the *retail trade, except for motor vehicles and motorcycles* (−0.8%). Conversely, it rose in the *trade and repair of motor vehicles and motorcycles* (+1.0%), in *accommodation and food service activities* (+0.9%) and, to a lesser extent, in *household services* (+0.3%).

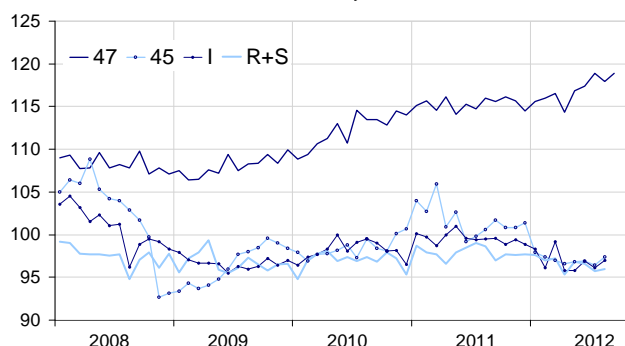
Quarter on quarter (q-o-q), the turnover rose in the *retail trade, except for motor vehicles and motorcycles* (+1.8%). It was broadly stable in the *trade and repair of motor vehicles and motorcycles* (+0.1%). And it declined slightly in *accommodation and food service activities* (−0.3%) and in *household services* (−0.3%).

Year on year (y-o-y), the turnover decreased sharply in the *trade and repair of motor vehicles and motorcycles* (−3.0%), in *accommodation and food services activities* (−2.8%) and in *household services* (−2.6%). On the contrary, it grew in the *retail trade, except for motor vehicles and motorcycles* (+2.4%).

According to our early estimate, the turnover in the *retail trade, except for motor vehicles and motorcycles* is expected to rise in September 2012 (+0.7%).

#### Turnover in the retail trade and personal services

Turnover indices, SA-WDA volume, Base year 2005



Please note that the «retail trade, except for motor vehicles and motorcycles» chart (47) includes the early estimate for September 2012.

Source : INSEE

#### Revisions

The SA-WDA evolution in July has been revised by −0.1 point in *accommodation and food service activities* and +0.1 point in *household services*. These variations, announced at −0.7% and −1.0% last month, have been corrected at −0.8% and −0.9%.

#### Variation of the turnover in the retail trade and personal services

SA-WDA volume, Base year 2005

Classification NAF rev. 2	Weight	Change in %			
		Aug./ July	July/ June	q-o-q (1)	y-o-y (2)
<b>47 Retail trade, except for motor vehicles and motorcycles</b>	<b>1000</b>	<b>−0.8</b>	<b>1.3</b>	<b>1.9</b>	<b>2.4</b>
471 Retail sale in non-specialized stores	415	−0.2	0.4	0.8	0.5
472 to 477 Retail sale in specialized stores	545	−1.2	1.9	2.7	3.6
478 and 479 Retail trade not in stores	40	1.2	−0.3	0.9	1.8
<b>45 Trade and repair of motor vehicles and motorcycles</b>	<b>1000</b>	<b>1.0</b>	<b>−0.5</b>	<b>0.1</b>	<b>−3.0</b>
<b>I Accommodation and food service activities</b>	<b>1000</b>	<b>0.9</b>	<b>−0.8</b>	<b>−0.3</b>	<b>−2.8</b>
<b>R+S Household services</b>	<b>1000</b>	<b>0.3</b>	<b>−0.9</b>	<b>−0.3</b>	<b>−2.6</b>
R Arts, entertainment and recreation	472	1.2	−2.6	−0.2	−3.8
S Other service activities	528	−0.3	0.4	−0.5	−1.5

(1) Quarter-on-quarter: last three months / three previous months.

(2) Year-on-year: last three months / three same months of the previous year.

The codes correspond to different levels of aggregation of the classification NAF rev.2.

Source: INSEE

#### Turnover indices: early estimate\*

SA-WDA volume, Base year 2005

	Change in %	
	Sept. 2012/ Aug. 2012	Sept. 2012/ Sept. 2011
<b>47 Retail trade, except for motor vehicles and motorcycles</b>	<b>0.7</b>	<b>2.8</b>

\* Econometric estimate from a set of sources available within 30 days after the end of the reference month

Source: INSEE