

Informations Rapides

10 décembre 2013 - n° 281

Main indicators



Industrial Production Indices – October 2013

In October 2013, manufacturing output increased slightly (+0.4%)

In October 2013, **manufacturing output** increased slightly (+0.4%, after -0.5% in September). Output decreased in **industrial production as a whole** (-0.3%, after -0.3% last month).

During the last three months, manufacturing output was stable ...

During the last three months (q-o-q), output was stable in the manufacturing sector, but declined in industry as a whole (-0.6%).

Output increased in the *manufacture of transport equipment* (+2.6%). Meanwhile, output decreased slightly in *other manufacturing* (-0.2%) and in the *manufacture of electrical and electronic equipment; machine equipment* (-0.2%). Moreover, it slumped by 14.3% in the *manufacture of coke and refined petroleum products*.

...and was lower than its last year's level by 1.1%.

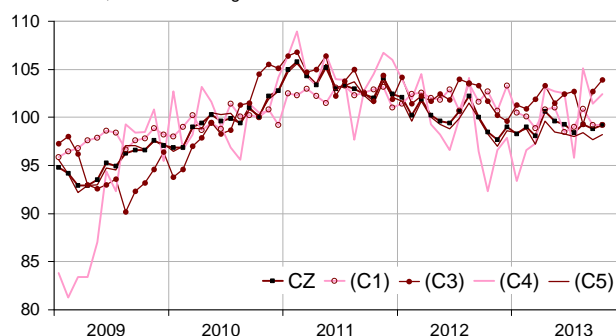
Manufacturing output dropped by 1.1% (y-o-y).

Output went down significantly in *other manufacturing* (-1.8%), in the *manufacture of food products and beverage* (-2.8%) and, to a lesser extent, in the *manufacture of electrical and electronic equipment; machine equipment* (-0.9%). It decreased dramatically in the *manufacture of coke and refined petroleum products* (-12.5%). On the opposite, output improved strongly in the *manufacture of transport equipment* (+5.5%).

Please note: all the series are adjusted for seasonal variations (SA) and the number of working days (WDA).

Monthly industrial Production indices

2010 based, SA-WDA changes in %



Legend: CZ: Manufacturing - (C1): Manufacture of food products and beverages - (C3): Electrical and electronic equipment; machine equipment - (C4): Manufacture of transport equipment - (C5): Other manufacturing

Sources : Insee, SSP, SOeS

Variation of the Industrial Production

2010 based, SA-WDA changes in %

	Oct. /	Sept. /	Q-o-Q change (1)	Year on year change (2)
NA : A10, (A17)				
BE: INDUSTRY	-0.3	-0.3	-0.6	-0.9
CZ: Manufacturing	0.4	-0.5	0.0	-1.1
(C1): Manufacture of food products and beverages	0.0	-1.7	0.3	-2.8
(C2): Manufacture of coke and refined petroleum products	-12.5	-2.2	-14.3	-12.5
(C3): Electrical and electronic equipment; machine equipment	1.2	3.4	-0.2	-0.9
(C4): Manufacture of transport equipment	1.0	-3.5	2.6	5.5
(C5): Other manufacturing	0.5	-0.7	-0.2	-1.8
(DE): Mining and quarrying; energy; water supply; waste management	-3.4	0.4	-2.9	0.1
FZ: CONSTRUCTION	0.1	-1.4	0.9	-0.8

(1) Last three months / three previous months

(2) Last three months / three same months of previous year

The codes correspond to the level of aggregation A 10 (A 17) of the "NA" aggregate classification based on NAF rev.2.

Sources : INSEE, SSP, SOeS

Variation of the Industrial Production

2010 based, SA-WDA changes in %

NA : A10, (A17), [A38 ou A64]	Oct. 2013	Oct. / Sept.	Sept. / Aug.	Quarter on quarter change
BE: INDUSTRY	98.3	-0.3	-0.3	-0.6
CZ: Manufacturing	99.2	0.4	-0.5	0.0
(C1): Man. of food products and beverages	99.2	0.0	-1.7	0.3
(C2): Man. of coke and refined petroleum products	70.4	-12.5	-2.2	-14.3
(C3): Electrical and electronic equipment; machine equipment	103.9	1.2	3.4	-0.2
[CI] Man. of computer, electronic and optical products	105.5	2.5	5.6	0.7
[CJ] Man. of electrical equipment	97.7	0.4	3.4	-1.4
[CK] Man. of machinery and equipment n.e.c. (1)	106.7	0.7	2.2	-0.1
(C4): Man. of transport equipment	102.4	1.0	-3.5	2.6
[CL1] Man. of motor vehicles, trailers and semi-trailers	86.4	0.1	-7.2	4.7
[CL2] Man. of other transport equipment	120.4	1.8	-0.5	1.0
(C5): Other manufacturing	98.2	0.5	-0.7	-0.2
[CB] Man. of textiles, wearing apparel, leather and related products	96.6	1.2	3.1	-3.6
[CC] Man. of wood and paper products; printing and reproduction of recorded media	87.8	-1.0	-3.5	-0.4
[CE] Man. of chemicals and chemical products	105.8	-0.8	1.6	-0.8
[CF] Man. of basic pharmaceutical products and pharmaceutical preparations	101.3	1.1	0.7	0.4
[CG] Man. of rubber and plastics products, and other non-metallic mineral products	93.5	-1.0	-0.4	-0.5
[CH] Man. of basic metals and fabricated metal products, except machinery and equipment	97.7	1.1	-2.7	1.1
[CM] Other manufacturing; repair and installation of machinery and equipment	102.7	1.6	1.2	-0.9
(DE): Mining and quarrying; energy; water supply; waste management	94.4	-3.4	0.4	-2.9
[BZ] Mining and quarrying	93.1	-2.4	-6.4	0.6
[DZ] Electricity, gas, steam and air-conditioning supply	92.0	-3.8	0.6	-3.9
[EZ] Water supply; sewerage, waste management and remediation	111.6	-1.3	1.3	2.1
FZ: CONSTRUCTION	96.5	0.1	-1.4	0.9
MIGs (2)				
Capital goods	103.2	1.3	-0.3	0.4
Intermediate goods	96.5	0.4	-1.2	0.5
Consumer durables	97.2	-1.1	3.4	-1.6
Consumer non-durables	100.4	0.1	-0.3	-0.5

(1) n.e.c. : not elsewhere classifiable

(2) Main industrial groupings: definition in Commission regulation EC of 14 June 2007

Sources: Insee, SSP, SOeS

In October 2013, output decreased strongly in « Mining and quarrying; energy; water supply; waste management » (-3.4%).

In particular, output decreased strongly in *electricity, gas, steam and air-conditioning supply* (-3.8%), due to a clement climate in October.

Output increased in other manufacturing (+0.5%)...

Output went up in *other manufacturing, repair and installation of machinery and equipment* (+1.6%), in the *manufacture of basic metals and fabricated metal products, except machinery and equipment* (+1.1%), in the *manufacture of basic pharmaceutical products and pharmaceutical preparations* (+1.1%) as well as in the *manufacture of textiles, wearing apparel, leather and related products* (+1.2%).

On the other hand, output declined in the *manufacture of rubber and plastics products, and other non-metallic mineral products* (-1.0%), in the *manufacture of chemicals and chemical products* (-0.8%) and in the *manufacture of wood and paper products; printing and reproduction of recorded media* (-1.0%).

... in the manufacture of electrical and electronic equipment; machine equipment (+1.2%)...

Output improved strongly in the *manufacture of computer, electronic and optical products* (+2.5%) and, in a less sustained pace, in the *manufacture of machinery and equipment n.e.c.* (+0.7%) and in the *manufacture of electrical equipment* (+0.4%).

... as well as in the manufacture of transport equipment (+1.0%).

Output increased in the *manufacture of other transport equipment* (+1.8%). It was almost stable in the *manufacture of motor vehicles, trailers and semi-trailers* (+0.1%) after a fall in September.

Output plummeted in the manufacture of coke and refined petroleum products (-12.5%).

Output went down by 12.5% in the *manufacture of coke and refined petroleum products* due to a maintenance shutdown.

• Revisions in September

Measure of variations' revisions

(in point %)

	Sept. / Aug.	Aug. / July	July / June	Q3 2013 / Q2 2013	2012 / 2011
Industry (BE)	0.20	-0.10	0.00	0.03	-0.01
raw serie	0.00	0.07	0.00	0.00	-0.01
SA-WDA coefficient	0.20	-0.17	0.00	0.03	0.00
Manufacturing (CZ)	0.20	0.00	0.00	0.07	-0.01
raw serie	0.06	-0.03	0.00	-0.07	-0.01
SA-WDA coefficient	0.14	0.03	0.00	0.14	0.00

Note of reading: in the manufacturing, the SA-WDA evolution between August 2013 and September 2013 is revised by +0.20 point: 0.06 is due to the raw serie's revision and 0.14 to the new calculation of the SA-WDA.

Sources: Insee, SSP, SOeS

Learn more:

- Complementary data (long series) and metadata (methodology, linked internet pages...) are available on the HTML page of this index: <http://www.insee.fr/en/themes/info-rapide.asp?id=10>
- Historical data are available on the BDM: [G950](#), [G951](#), [G952](#), [G953](#), [G963](#).
- Press contact: bureau-de-presse@insee.fr

Next issue: January 10 2014, 8:45 AM