

Informations *Rapides*

30 septembre 2013 - n° 228



■ Turnover in the wholesale trade and business services - July 2013

In July 2013, the turnover increased in the wholesale trade and business services

Every index in this issue is in value, seasonally and working-day adjusted (SA-WDA).

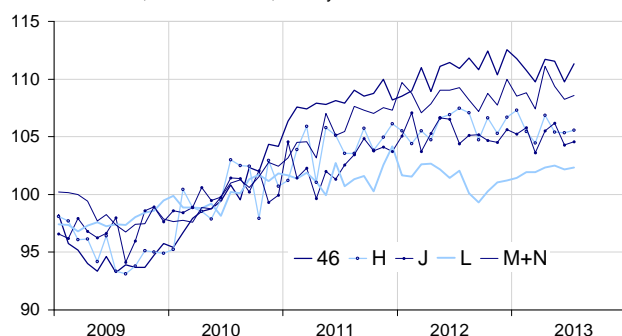
In July 2013, the turnover increased in the *wholesale trade, except for motor vehicles and motorcycles* (+1.4%). To a lesser extent, it went up by +0.3% in *information and communication* and in *business support activities*, and by +0.2% in *real estate activities* and in *transportation and storage*.

Over the last three months (q-o-q), the turnover decreased moderately in *business support activities* (– 0.3%). On the contrary, it grew slightly in *real estate activities* (+0.2%). It was broadly steady in *transportation and storage* (–0.1%) and in the *wholesale trade, except for motor vehicles and motorcycles* (+0.1%). It remained stable in *information and communication* (+0.0%).

Over the year (y-o-y), the turnover declined in *transportation and storage* (–1.4%), in *information and communication* (–0.8%), in *business support activities* (–0.3%) and in the *wholesale trade, except for motor vehicles and motorcycles* (–0.3%). On the other hand, it rose in *real estate activities* (+0.4%).

Wholesale trade and business services

Turnover indices, SA-WDA value, Base year 2010



Source : INSEE

Revisions

The evolution in June has been revised by –0.2 point in *business support activities*, by +0.2 point in the *wholesale trade, except for motor vehicles and motorcycles*, and by –0.1 point in *real estate activities*. In the same period, the variation has been confirmed in *transportation and storage* and in *information and communication*.

Variation of the turnover in the wholesale trade and business services

SA-WDA value, Base year 2010

Nace classification	Weight	Change in %			
		July/June	June/May	q-o-q (1)	y-o-y (2)
46 Wholesale trade, except for motor vehicles and motorcycles	1000	1.4	–1.6	0.1	–0.3
H Transportation and storage	1000	0.2	–0.1	–0.1	–1.4
J Information and communication	1000	0.3	–1.8	0.0	–0.8
L Real estate activities	1000	0.2	–0.3	0.2	0.4
M+N Business support activities	1000	0.3	–1.0	–0.3	–0.3
M Professional, scientific and technical activities	579	0.3	–1.4	–0.2	0.0
N Administrative and support service activities	421	0.3	–0.4	–0.5	–0.8

(1) Quarter-on-quarter: last three months / three previous months.

(2) Year-on-year: last three months / three same months of the previous year.

Source: INSEE