

Informations *Rapides*

28 mai 2014 - n° 128



■ Turnover in industry and construction – March 2014

In March 2014, the turnover in manufacturing industry fell compared to February (–0.5%)

Every index in this issue is in value, seasonally and working day adjusted.
The commentary shows evolutions of subsections by decreasing contributions. The contribution of a subsection depends on the extent of the evolution and on its weight.

In March 2014, the turnover went down in the **manufacturing industry** (–0.5%) after a rise in February (+0.7%). Exports fell as well (–1.2%). The turnover decreased slightly in the **industry as a whole** (–0.2%).

Rise over the last three months (+0.4%)...

Over the quarter (q-o-q), the turnover improved in the **manufacturing industry** (+0.4%) and levelled off in the **industry as a whole** (+0.1%).

The turnover went up in *other manufacturing* (+0.5%), thanks to a sharp increase in *other manufacturing: repair and installation of machinery and equipment* (+2.4%) and in the *manufacture of rubber and plastic products, and other non-metallic mineral products* (+1.0%). It grew in the *manufacture of food products and beverages* (+0.9%) and in the *manufacture of coke and refined petroleum products* (+1.3%). Conversely, it fell in the *manufacture of transport equipments* (–0.9%), owed to a decline in the *manufacture of other transport equipment* (–1.4%). It dipped slightly in the *electrical and electronic equipment; machine equipment* (–0.2%).

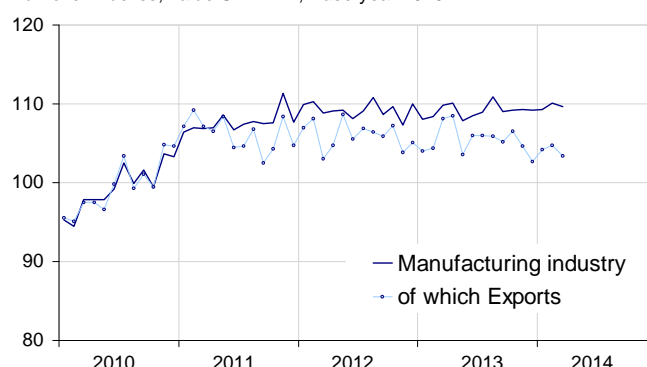
...and over the last year (+0.9%)

Year-on-year, the turnover rose in the **manufacturing industry** (+0.9%).

It climbed in *other manufacturing* (+1.1%), in the *manufacture of transport equipment* (+1.3%) and in the *manufacture of food products and beverages* (+0.8%). It went up slightly in the *manufacture of coke and refined petroleum products* (+0.3%). On the other hand, it fell in the *electrical and electronic equipment; machine equipment* (–0.6%).

Turnover in manufacturing industry

Turnover indexes, value SA-WDA, Base year 2010



Source: INSEE

Variation of the turnover in industry and construction

SA-WDA value, Base year 2010

NA : A 10, (A 17)	Weight**	Change in %			
		March/ Feb.	Feb./ Jan.	q-o-q (1)	y-o-y (2)
BE : INDUSTRY	10000	–0.2	0.3	0.1	0.5
CZ : MANUFACTURING	8373	–0.5	0.7	0.4	0.9
<i>Of which Exports</i>	<i>2731</i>	<i>–1.2</i>	<i>0.5</i>	<i>–0.5</i>	<i>–1.3</i>
(C1): Manufacture of food products and beverages	1647	–0.6	–0.6	0.9	0.8
(C2): Manufacture of coke and refined petroleum products	478	–10.5	5.3	1.3	0.3
(C3): Electrical and electronic equipment; machine equipment	1005	–1.2	1.4	–0.2	–0.6
(C4): Manufacture of transport equipment	1428	3.8	–0.7	–0.9	1.3
(C5): Other manufacturing	3815	–0.2	0.9	0.5	1.1
DE: Mining and quarrying; energy; water supply; waste management	1627	1.5	–1.7	–1.3	–1.6
FZ: CONSTRUCTION	10000	0.5	1.5	–0.4	0.4

** 10000=B...E and F

(1) Quarter-on-quarter: last three months / three previous months

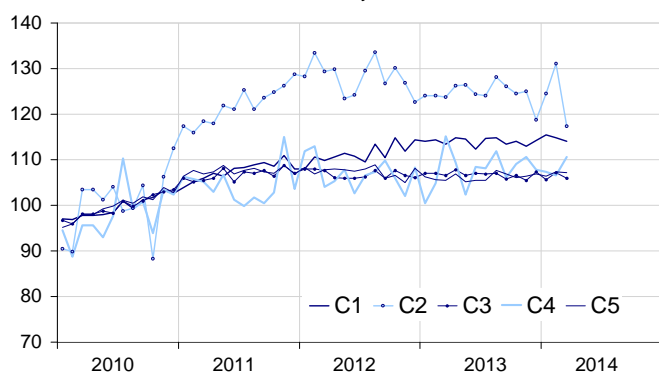
(2) Year-on-year: last three months / three same months of previous year

The codes correspond to different levels of aggregation of the NACE classification.

Source: INSEE

Turnover in manufacturing industry by sector

Turnover indexes, value SA-WDA, Base year 2010



Source: INSEE

In March 2014, the turnover plummeted in coke and refined petroleum products (–10.5%)

In March, the turnover crashed in the *manufacture of coke and refined petroleum products* (–10.5%), after a marked two-months rise.

Decline in equipments (–1.2%)

In March, the turnover went down in the *electrical and electronic equipment; machine equipment* (–1.2%) after a rise in February (+1.4%). It plunged in the *manufacture of computer, electronic and optical products* (–3.5%). It decreased significantly in the *manufacture of machinery and equipment n.e.c.* (–1.7%). Conversely, it grew in the *manufacture of electrical equipment* (+1.5%).

Fall in food products and beverages (–0.6%)

The turnover declined for the second month in a row in the *manufacture of food products and beverages* (–0.6%, the same as in February).

Slight decrease in other manufacturing (–0.2%)

The turnover fell slightly in March in *other manufacturing* (–0.2%) after a rise in February (+0.9%). It declined in the *manufacture of chemicals and chemical products* (–0.6%) and in *other manufacturing: repair and installation of machinery and equipment* (–0.5%). On the other hand, it rose sharply in the *manufacture of basic pharmaceutical products and pharmaceutical preparations* (+2.6%).

Rebound in transport equipment (+3.8%)

The turnover bounced back in the *manufacture of transport equipment* (+3.8%) after a fall in February (–0.7%). It soared in the *manufacture of other transport equipment* (+7.6%), due to a sharp rise for the domestic market whereas exports fell. But it decreased in the *manufacture of motor vehicles, trailers and semi-trailers* (–1.3%).

• Revisions: –0.2 point in February

In the *manufacturing industry*, the evolution of the turnover is revised by –0.2 point (+0.7%, instead of +0.9% published previously). The main revision concerned the *manufacture of other transport equipment*.

Indexes of turnover in industry and construction

SA-WDA, based year 2010

Industries :	Weight*	March 2014	Change in %		
			Mar./ Feb.	Feb./ Jan.	q-o-q (1)
BE: INDUSTRY	10000	109.6	–0.2	0.3	0.1
CZ: MANUFACTURING	8373	109.6	–0.5	0.7	0.4
of which Exports	2731	103.4	–1.2	0.5	–0.5
(C1): Man. of food products and beverages	1647	114.1	–0.6	–0.6	0.9
of which Exports	284	118.9	–2.6	0.5	2.2
(C2): Man. of coke and refined petroleum products	478	117.3	–10.5	5.3	1.3
(C3): Electrical and electronic equipment; machine equipment	1005	105.9	–1.2	1.4	–0.2
of which Exports	483	105.9	1.1	3.5	0.8
[CI] Man. of computer, electronic and optical products	269	96.3	–3.5	–0.3	–2.2
[CJ] Man. of electrical equipment	302	104.7	1.5	2.2	0.6
[CK] Man. of machinery and equipment n.e.c.	434	112.7	–1.7	1.9	0.5
(C4): Man. of transport equipment	1428	110.6	3.8	–0.7	–0.9
of which Exports	693	86.9	–6.4	–0.5	–5.9
[CL1] Man. of motor vehicles, trailers and semi-trailers	689	92.3	–1.3	1.6	0.0
[CL2] Man. of other transport equipment	739	127.7	7.6	–2.4	–1.4
(C5): Other manufacturing	3815	107.2	–0.2	0.9	0.5
of which Exports	1213	107.5	0.4	0.3	1.3
[CB] Man. of textiles, wearing apparel, leather and related products	191	110.6	0.2	0.9	0.4
[CC] Man. of wood and paper products; printing and reproduction of recorded media	427	102.3	–0.6	1.0	0.8
[CE] Man. of chemicals and chemical products	706	107.2	–0.6	0.2	–0.9
[CF] Man. of basic pharmaceutical products and pharmaceutical preparations	322	100.8	2.6	0.8	–1.2
[CG] Man. of rubber and plastics products, and other non-metallic mineral products	620	106.4	0.1	0.3	1.0
[CH] Man. of basic metals and fabricated metal products, except machinery and equipment	900	106.8	–0.4	0.8	0.3
[CM] Other manufacturing: repair and installation of machinery and equipment	649	114.2	–0.5	2.7	2.4
DE: Mining and quarrying; energy, water supply, sewerage, waste management	1627	110.0	1.5	–1.7	–1.3
[BZ] Mining and quarrying	69	107.4	0.9	–3.3	0.0
[DZ] Electricity, gas, steam and air-conditioning supply	1216	112.5	1.8	–1.1	–0.8
[EZ] Water supply; sewerage, waste management and remediation	342	101.5	–0.1	–3.6	–3.4
FZ: CONSTRUCTION	10000	106.9	0.5	1.5	–0.4

** 10000=B...E and F

(1) Quarter-on-quarter: last three months / three previous months

Source: INSEE

Measure of variations' revisions

(in point %)

	Feb./ Jan.	Jan./ Dec.	Dec./ Nov.	Q4 2013/ Q3 2013	2013/ 2012
Industry (BE)	–0.27	0.00	0.09	0.00	0.00
raw serie	–0.28	0.08	0.00	0.00	0.00
SA-WDA coeff.	0.00	–0.08	0.09	0.00	0.00
Manufacturing industry (CZ)	–0.18	0.00	0.00	–0.06	–0.04
raw serie	–0.29	0.00	0.00	0.00	0.00
SA-WDA coeff.	0.11	0.00	0.00	–0.06	–0.04

Foot note: in the manufacturing industry, the SA-WDA evolution between January and February 2014 is revised by –0.18 point: –0.29 point is due to the raw serie's revision and +0.11 to the new calculation of the SA-WDA.

Source : INSEE

For further information:

- Complementary data (long series) and metadata (methodology, linked internet pages...) are available on the HTML page of this index: <http://www.insee.fr/fr/themes/info-rapide.asp?id=53>
- Historical data are available on the BDM: [G1444](#), [G1445](#), [G1446](#), [G1447](#), [G1448](#) and [G1529](#)
- Press contact: bureau-de-presse@insee.fr

Next issue: June 30th, 2014