

Informations Rapides

30 avril 2014 - n° 104



■ Turnover in industry and construction – February 2014

In February 2014, the turnover in manufacturing industry went up compared to January (+0.9%)

Every index in this issue is in value, seasonally and working day adjusted.

The commentary shows evolutions of subsections by decreasing contributions. The contribution of a subsection depends on the extent of the evolution and on its weight.

In February 2014, the turnover rose in the **manufacturing industry** (+0.9%) after a stability in January (+0.1%). Exports grew again (+0.8%). The turnover went up slightly in the **industry as a whole** (+0.5%).

Increase over the last three months (+0.4%)...

Over the quarter (q-o-q), the turnover improved in the **manufacturing industry** (+0.4%) as well as in the **industry as a whole** (+0.6%).

It climbed in the *manufacture of food products and beverages* (+1.2%). It rose in *other manufacturing* (+0.4%) thanks to a sharp increase in *other manufacturing: repair and installation of machinery and equipment* (+2.5%) and in spite of a substantial fall in the *manufacture of chemicals and chemical products* (–1.1%) and in the *manufacture of basic pharmaceutical products and pharmaceutical preparations* (–2.9%). It grew in the *electrical and electronic equipment; machine equipment* (+0.8%). On the other hand, it fell in the *manufacture of transport equipments* (–0.6%), owed to a decline in the *manufacture of other transport equipments* (–2.9%). It went down slightly in the *manufacture of coke and refined petroleum products* (–0.2%).

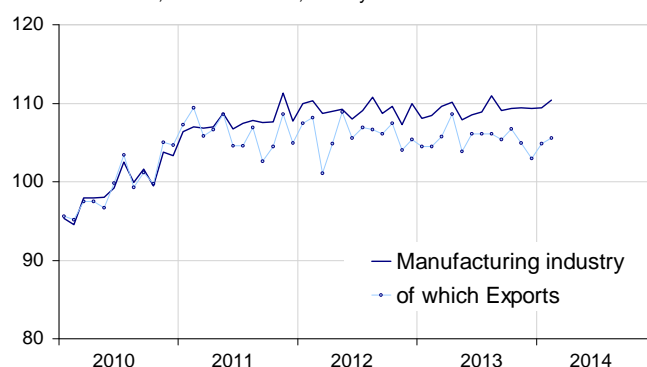
...and over the last year (+0.8%)

Year-on-year, the turnover rose in the **manufacturing industry** (+0.8%).

It rocketed in the *manufacture of transport equipment* (+3.5%). To a lesser extent, it rose in the *manufacture of food products and beverages* (+0.6%) and in the *manufacture of coke and refined petroleum products* (+1.2%). It went up slightly in *other manufacturing* (+0.2%). It levelled off in *electrical and electronic equipments; machine equipment* (0.0%).

Turnover in manufacturing industry

Turnover indexes, value SA-WDA, Base year 2010



Source: INSEE

Variation of the turnover in industry and construction

SA-WDA value, Base year 2010

NA : A 10, (A 17)	Weight**	Feb./ Jan.	Jan./ Dec.	q-o-q (1)	y-o-y (2)
BE : INDUSTRY	10000	0.5	–0.7	0.6	0.6
CZ : MANUFACTURING	8373	0.9	0.1	0.4	0.8
Of which Exports	2731	0.8	1.7	–1.1	–0.3
(C1): Manufacture of food products and beverages	1647	–0.6	1.1	1.2	0.6
(C2): Manufacture of coke and refined petroleum products	478	4.2	5.4	–0.2	1.2
(C3): Electrical and electronic equipment; machine equipment	1005	1.6	–1.4	0.8	0.0
(C4): Manufacture of transport equipment	1428	0.8	–0.5	–0.6	3.5
(C5): Other manufacturing	3815	1.0	–0.6	0.4	0.2
DE: Mining and quarrying; energy; water supply; waste management	1627	–1.7	–4.6	1.7	–0.6
FZ: CONSTRUCTION	10000	1.0	–3.2	0.6	0.9

** 10000=B...E and F

(1) Quarter-on-quarter: last three months / three previous months

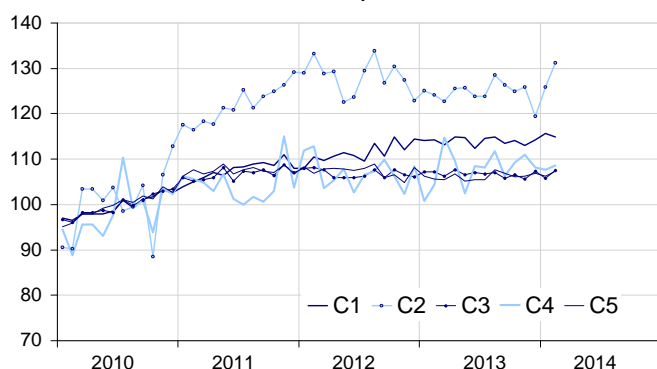
(2) Year-on-year : last three months / three same months of previous year

The codes correspond to different levels of aggregation of the NACE classification.

Source: INSEE

Turnover in manufacturing industry by sector

Turnover indexes, value SA-WDA, Base year 2010



Source: INSEE

In February 2014, the turnover recovered in other manufacturing (+1.0%)

In February, the turnover bounced back in *other manufacturing* (+1.0%, after -0.6% in January). It grew dramatically in *other manufacturing: repair and installation of machinery and equipment* (+3.2%), and substantially in the *manufacture of basic metals and fabricated metal products, except machinery and equipment* (+0.8%) and in the *manufacture of wood and paper products; printing and reproduction of recorded media* (+0.9%).

New surge in coke and refined petroleum (+4.2%)

In February, the turnover took off again in the *manufacture of coke and refined petroleum products* (+4.2%, after +5.4% in January).

Rebound in equipments (+1.6%)...

The turnover rallied in February in the *electrical and electronic equipment; machine equipment* (+1.6%) after a fall in January (-1.4%). It jumped in the *manufacture of machinery and equipment n.e.c.* (+2.0%) and in the *manufacture of electrical equipment* (+2.5%). Conversely, it declined in the *manufacture of computer, electronic and optical products* (-0.3%).

...and in transport equipment (+0.8%)

The turnover rose in February in the *manufacture of transport equipment* (+0.8%) after a fall in January (-0.5%). It picked up in the *manufacture of motor vehicles, trailers and semi-trailers* (+2.1%) whereas it levelled off in the *manufacture of other transport equipment* (-0.1%).

Decline in food products and beverages (-0.6%)

The turnover fell slightly in the *manufacture of food products and beverages* (-0.6%) after a growth over the last two months.

• Revisions: +0.1 point in January

In the *manufacturing industry*, the evolution of the turnover is revised by +0.1 point (+0.1%, instead of 0.0% published previously). The main revision concerned the *manufacture of coke and refined petroleum products*.

Indexes of turnover in industry and construction

SA-WDA, based year 2010

Industries:	Weight*	Feb. 2014	Feb./Jan.	Jan./Dec.	q-o-q (1)
BE: INDUSTRY	10000	110.1	0.5	-0.7	0.6
CZ: MANUFACTURING	8373	110.4	0.9	0.1	0.4
of which Exports	2731	105.6	0.8	1.7	-1.1
(C1): Man. of food products and beverages	1647	114.9	-0.6	1.1	1.2
of which Exports	284	122.4	0.2	3.2	2.7
(C2): Man. of coke and refined petroleum products	478	131.2	4.2	5.4	-0.2
(C3): Electrical and electronic equipment; machine equipment	1005	107.5	1.6	-1.4	0.8
of which Exports	483	104.6	3.7	-0.6	-1.1
[CI] Man. of computer, electronic and optical products	269	100.4	-0.3	-2.0	0.7
[CJ] Man. of electrical equipment	302	103.1	2.5	-1.7	-0.3
[CK] Man. of machinery and equipment n.e.c.	434	115.0	2.0	-0.8	1.7
(C4): Man. of transport equipment	1428	108.6	0.8	-0.5	-0.6
of which Exports	693	96.6	1.0	1.4	-3.7
[CL1] Man. of motor vehicles, trailers and semi-trailers	689	94.0	2.1	-2.7	3.0
[CL2] Man. of other transport equipment	739	122.2	-0.1	1.2	-2.9
(C5): Other manufacturing	3815	107.4	1.0	-0.6	0.4
of which Exports	1213	107.0	0.3	1.7	-0.2
[CB] Man. of textiles, wearing apparel, leather and related products	191	110.2	0.9	-0.5	0.6
[CC] Man. of wood and paper products; printing and reproduction of recorded media	427	102.9	0.9	0.1	0.8
[CE] Man. of chemicals and chemical products	706	108.1	0.3	-0.7	-1.1
[CF] Man. of basic pharmaceutical products and pharmaceutical preparations	322	97.9	0.8	-1.9	-2.9
[CG] Man. of rubber and plastics products, and other non-metallic mineral products	620	106.2	0.3	-0.1	1.2
[CH] Man. of basic metals and fabricated metal products, except machinery and equipment	900	107.1	0.8	-0.5	0.4
[CM] Other manufacturing; repair and installation of machinery and equipment	649	115.1	3.2	-0.7	2.5
DE: Mining and quarrying; energy, water supply, sewerage, waste management	1627	108.1	-1.7	-4.6	1.7
[BZ] Mining and quarrying	69	107.9	-2.4	0.2	0.3
[DZ] Electricity, gas, steam and air-conditioning supply	1216	109.8	-1.3	-5.7	2.5
[EZ] Water supply; sewerage, waste management and remediation	342	101.7	-3.7	-1.3	-1.3
FZ: CONSTRUCTION	10000	106.0	1.0	-3.2	0.6

** 10000=B...E and F

(1) Quarter-on-quarter: last three months / three previous months

Source: INSEE

Measure of variations' revisions

(in point %)

	Jan./Dec.	Dec./Nov.	Nov./Oct.	Q4 2013/Q3 2013	2013/2012
Industry (BE)	-0.27	0.27	0.00	0.09	0.01
raw serie	-0.16	0.00	0.00	0.00	0.00
SA-WDA coeff.	-0.11	0.27	0.00	0.09	0.01
Manufacturing industry (CZ)	0.09	0.09	0.00	0.15	0.02
raw serie	0.00	0.00	0.00	0.00	0.00
SA-WDA coeff.	0.09	0.09	0.00	0.15	0.02

Foot note: in the manufacturing, the SA-WDA evolution between December 2013 and January 2014 is revised by +0.09 point: 0.00 point is due to the raw serie's revision and +0.09 to the new calculation of the SA-WDA.

Source : INSEE

For further information:

- Complementary data (long series) and metadata (methodology, linked internet pages...) are available on the HTML page of this index: <http://www.insee.fr/fr/themes/info-rapide.asp?id=53>
- Historical data are available on the BDM: [G1444](#), [G1445](#), [G1446](#), [G1447](#), [G1448](#) and [G1529](#)
- Press contact: bureau-de-presse@insee.fr

Next issue: May 28th, 2014