

# Informations Rapides



1 août 2011 - n° 198 **CONJONCTURE**

## ■ Turnover in the wholesale trade and business services - May 2011

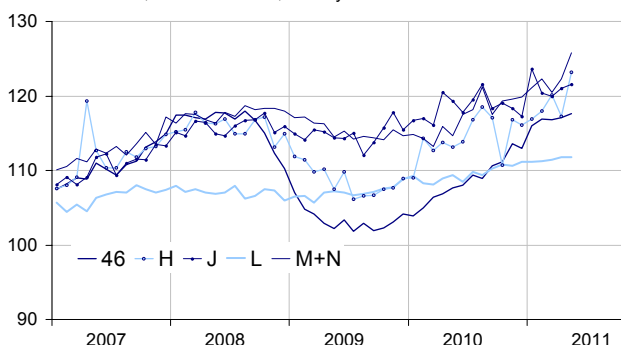
### In May 2011, the turnover surged in transportation and storage and in business support activities

Every index in this issue is in value, seasonally and working-day adjusted.

In May 2011, the turnover soared in *transportation and storage* (+5.0 %). It also increased in *business support activities* (+2.9 %) and, to a lesser extent, in *information and communication* (+0.5 %) and in the “*wholesale trade...*” (+0.4 %). It was stable in *real estate activities* (0.0 %).

#### Wholesale trade and business service

Turnover indices, value SA-WDA, Base year 2005



Source : INSEE

Quarter on quarter (q-o-q), the turnover rose : by 2.7 % in *transportation and storage*, by 1.6 % in the “*wholesale trade...*”, by 1.5 % in *business support activities*, by 0.4 % in *information and communication* and by 0.4 % in *real estate activities*.

Year on year (y-o-y), the turnover increased by 9.5 % in the “*wholesale trade...*”. It also rose in *business support activities* (+7.2 %), in *transportation and storage* (+6.2 %) and, to a lesser extent, in *real estate activities* (+2.6 %) and in *information and communication* (+1.9 %).

The SA-WDA evolution in March has been revised by -0.4 point in *transportation and storage*. The decrease, initially announced at -1.9 %, is corrected at -2.3 %. In

the same period, the SA-WDA evolution has been revised by +0.3 point in the “*wholesale trade...*”, +0.3 point in *business support*, +0.1 point in *real estate activities* and -0.1 point in *information and communication*. These revisions are mostly due to the new calculation of the SA-WDA coefficients.

#### Monthly turnover indices

SA-WDA value, Base year 2005

Classification NAF rev. 2	Weight	Change in %			
		May/ April	April/ March	q-o-q (1)	y-o-y (2)
<b>46 Wholesale trade, except of motor vehicles and motorcycles</b>	<b>1000</b>	<b>0.4</b>	<b>0.3</b>	<b>1.6</b>	<b>9.5</b>
Wholesale on a fee or contract basis	166	0.7	0.9	0.9	6.4
Wholesale of agricultural raw materials and live animals	62	2.3	0.7	4.6	29.8
Wholesale of food, beverages and tobacco	183	-0.8	1.2	1.7	7.0
Wholesale of household goods	173	1.2	-0.8	1.5	3.0
Wholesale of professional equipment goods	215	-0.8	2.1	0.6	10.3
Other specialised wholesale	193	0.9	-2.0	2.2	13.1
<b>H Transportation and storage</b>	<b>1000</b>	<b>5.0</b>	<b>-2.3</b>	<b>2.7</b>	<b>6.2</b>
<b>J Information and communication</b>	<b>1000</b>	<b>0.5</b>	<b>0.8</b>	<b>0.4</b>	<b>1.9</b>
<b>L Real estate activities</b>	<b>1000</b>	<b>0.0</b>	<b>0.4</b>	<b>0.4</b>	<b>2.6</b>
<b>M+N Business support activities</b>	<b>1000</b>	<b>2.9</b>	<b>1.5</b>	<b>1.5</b>	<b>7.2</b>
M Professional, scientific and technical activities	626	1.7	2.3	1.4	7.7
N Administrative and support service activities	374	4.8	0.2	1.5	6.3

(1) Quarter-on-quarter: last three months / three previous months.

(2) Year-on-year: last three months / three same months of the previous year.

The codes correspond to different levels of aggregation of the classification NAF rev. 2.

Source : INSEE