

Informations Rapides

1 septembre 2011 - n° 213 **CONJONCTURE**



■ Turnover in the wholesale trade and business services - June 2011

In June 2011, the turnover fell in transportation and storage, in business support activities and in the wholesale trade

Every index in this issue is in value, seasonally and working-day adjusted.

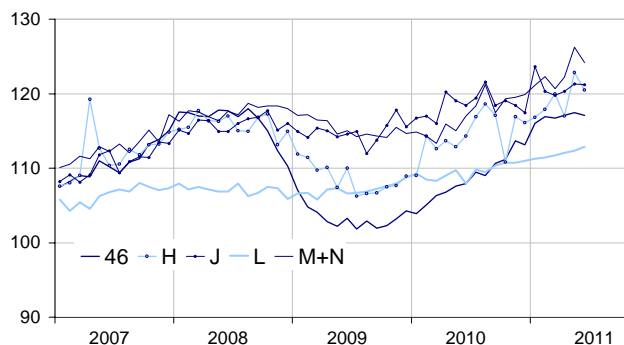
In June 2011, the turnover declined in *transportation and storage* (−1.9 %) and in *business support activities* (−1.6 %). It slightly dipped in the *wholesale trade* (−0.3 %). It was broadly steady in *information and communication* (−0.1 %) whereas it grew in *real estate activities* (+0.5 %).

Quarter on quarter (q-o-q), the turnover rose : by 2.3 % in *business support activities*, by 1.6 % in *transportation and storage*, by 0.9 % in *real estate activities*. and by 0.6 % in the *wholesale trade*. It was slightly down in *information and communication* (−0.2 %)

Year on year (y-o-y), the turnover picked up by 9.1 % in the *wholesale trade*. It also grew in *business support activities* (+7.1 %), in *transportation and storage* (+5.7 %) and, to a lesser extent, in *real estate activities* (+3.3 %) and in *information and communication* (+1.4 %).

Wholesale trade and business service

Turnover indices, value SA-WDA, Base year 2005



Source : INSEE

Revisions

The SA-WDA evolution in May has been revised by +0.4 point in *business support activities*. The increase, initially announced at +2.9 %, is corrected at +3.3 %. In

the same period, the SA-WDA evolution has been revised by +0.3 point in *information and communication*, by +0.2 point in *real estate activities* and by −0.1 point in the *wholesale trade*. The turnover's variation has been confirmed in *transportation and storage*.

Monthly turnover indices

SA-WDA value, Base year 2005

Classification NAF rev.2	Weight	Change in %			
		June/ May	May/ April	q-o-q (1)	y-o-y (2)
46 Wholesale trade, except of motor vehicles and motorcycles	1000	−0.3	0.3	0.6	9.1
Wholesale on a fee or contract basis	166	1.2	0.0	2.0	7.4
Wholesale of agricultural raw materials and live animals	62	0.1	1.0	1.9	27.9
Wholesale of food, beverages and tobacco	183	0.8	−0.8	1.2	7.6
Wholesale of household goods	173	0.3	1.3	1.3	3.0
Wholesale of professional equipment goods	215	−1.4	−0.9	−0.2	9.3
Other specialized wholesale	193	−2.0	1.1	−1.8	10.9
H Transportation and storage	1000	−1.9	5.0	1.6	5.7
J Information and communication	1000	−0.1	0.8	−0.2	1.4
L Real estate activities	1000	0.5	0.2	0.9	3.3
M+N Business support activities	1000	−1.6	3.3	2.3	7.1
M Professional, scientific and technical activities	626	−0.5	2.4	2.9	7.5
N Administrative and support service activities	374	−3.5	5.0	1.5	6.5

(1) Quarter-on-quarter: last three months / three previous months.

(2) Year-on-year: last three months / three same months of the previous year.

The codes correspond with different levels of aggregation of the classification NAF rev. 2.

Source: INSEE