

Informations Rapides



1 juillet 2011 - n° 168 **CONJONCTURE**

■ Turnover in the wholesale trade and business services - April 2011

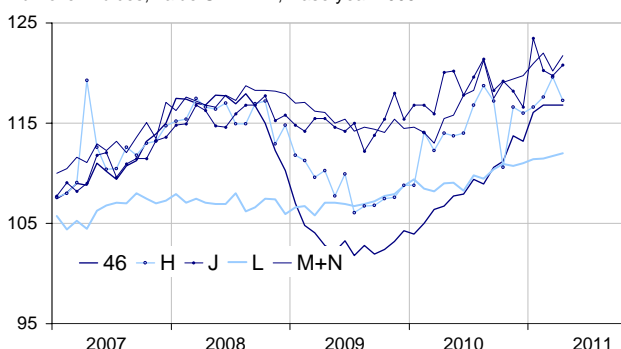
In April 2011, the turnover increased in business support activities but fell in transportation and storage

Every index in this issue is in value, seasonally and working-day adjusted.

In April 2011, the turnover rose in *business support activities* (+1.2%), in *information and communication* (+0.9%) and, to a lesser extent, in *real estate activities* (+0.3%). It was unchanged in the “*wholesale trade...*” (+0.0%). Conversely, it dropped in *transportation and storage* (−1.9%) after an increase last three months.

Wholesale trade and business service

Turnover indices, value SA-WDA, Base year 2005



Source : INSEE

Quarter on quarter (q-o-q), the turnover went up : by 2.2% in the “*wholesale trade...*”, by 1.5% in *transportation and storage*, by 1.1% in *business support activities*, by 0.7% in *information and communication* and by 0.6% in *real estate activities*.

Year on year (y-o-y), the turnover grew by 10.2% in the “*wholesale trade...*”. It also rose in *business support activities* (+6.2%), in *transportation and storage* (+4.1%), in *real estate activities* (+2.9%) and in *information and communication* (+2.3%).

The SA-WDA evolution in March has been revised by −0.3 point in *business support activities*. The decrease, initially announced at −1.2%, is corrected at −1.5%. In the same period, the SA-WDA evolution has been revised by +0.1 point in *information and*

communication, +0.1 point in *transportation and storage*, and −0.1 point in the “*wholesale trade...*”. The turnover’s variation has been confirmed in *real estate activities*.

Monthly turnover indices

SA-WDA value, Base year 2005

Classification NAF rev. 2	Weight	Change in %			
		April/March	March/ Feb.	q-o-q (1)	y-o-y (2)
46 Wholesale trade, except of motor vehicles and motorcycles	1000	0.0	0.0	2.2	10.2
Wholesale on a fee or contract basis	166	0.9	−0.9	0.6	5.7
Wholesale of agricultural raw materials and live animals	62	0.6	−0.3	5.8	31.1
Wholesale of food, beverages and tobacco	183	1.1	−0.2	2.5	7.9
Wholesale of household goods	173	−1.3	1.3	0.1	3.1
Wholesale of professional equipment goods	215	1.7	0.2	1.3	10.3
Other specialised wholesale	193	−2.6	−0.5	4.7	15.8
H Transportation and storage	1000	−1.9	1.7	1.5	4.1
J Information and communication	1000	0.9	−0.5	0.7	2.3
L Real estate activities	1000	0.3	0.2	0.6	2.9
M+N Business support activities	1000	1.2	−1.5	1.1	6.2
M Professional, scientific and technical activities	626	1.9	−1.8	1.7	6.8
N Administrative and support service activities	374	0.1	−0.8	0.1	5.3

(1) Quarter-on-quarter: last three months / three previous months.

(2) Year-on-year: last three months / three same months of the previous year.

The codes correspond to different levels of aggregation of the classification NAF rev. 2.

Source : INSEE