

# Informations *Rapides*



11 juillet 2011 - n° 175 **CONJONCTURE**

## Main indicators

### ■ Industrial Production Indices – May 2011

## In May 2011, manufacturing output clearly increased (+1.5%)

In May 2011, the **manufacturing output** clearly increased in volume (+1.5%). It was barely stable in April 2011 (+0.1%).

In the **industry**, output strongly increased as well (+2.0%).

This increase is not due to the lack of trading days or bridges, which as been calculated in the SA-WDA data.

### In the last three months, the manufacturing output increased (+0.9%)...

In the last three months (quarter-on-quarter change), the output increased in the manufacturing sector (+0.9%) and was stable in the industry as a whole (+0.1%).

The output increased in the *“other manufacturing”* (+1.6%, q-o-q) and in the *electrical, electronic equipment and machine equipment* (+1.6%).

In the opposite, it decreased in the *manufacture of transport equipment* (-1.9%).

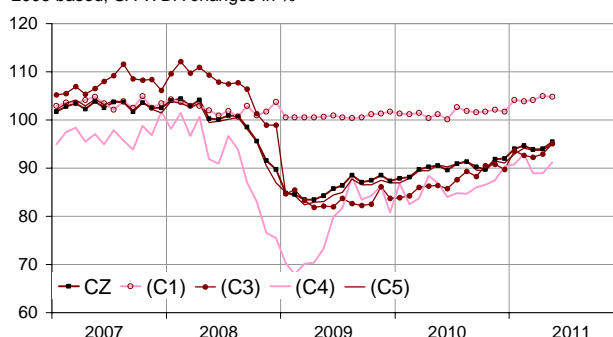
### ...and exceeded it's last year's level by 4.8%

The manufacturing output rose by 4.8% (y-o-y). It soared in the *“other manufacturing”* (+4.8%), in the *electrical and electronic equipment and machine equipment* (+8.4%) and in the *manufacture of transport equipment* (+3.9%).

*Please note: all the data are adjusted for seasonal variations (SA) and the number of working days (WDA).*

### Monthly industrial Production indexes

2005 based, SA-WDA changes in %



Legend : CZ : Manufacturing - (C1) : Manufacture of food products and beverages - (C3) : Electrical and electronic equipment; machine equipment - (C4) : Manufacture of transport equipment - (C5) : Other manufacturing

Sources : INSEE, SSP, SOeS

### Variation of the Industrial Production by activity (NA)

2005 based, SA-WDA changes in %

	May / April	April / March	Quarter on quarter change	Year on year change (1)
<b>NA : A10, (A17)</b>				
<b>BE: INDUSTRY</b>	2,0	-0,5	0,1	2,9
<b>CZ: MANUFACTURING</b>	1,5	0,1	0,9	4,8
(C1): Manufacture of food products and beverages	-0,2	0,9	1,4	3,6
(C2): Manufacture of coke and refined petroleum products	3,4	-7,5	-5,8	-11,3
(C3): Electrical and electronic equipment; machine equipment	2,3	0,8	1,6	8,4
(C4): Manufacture of transport equipment	2,6	-0,1	-1,9	3,9
(C5): Other manufacturing	1,4	-0,1	1,6	4,8
<b>(DE): Mining and quarrying; energy; water supply; waste management</b>	5,7	-4,3	-5,3	-8,3
<b>FZ: Construction</b>	-1,0	1,3	3,3	1,4

(1) Last three months / three same months of previous year  
The codes correspond to the level of aggregation A 10 (A 17) of the "NA" aggregate classification based on NAF rev.2.

Sources : INSEE, SSP, SoeS

**In May 2011, output increased in the « other manufacturing » (+1.4%) ...**

The output increased in the “other manufacturing, repair and installation of machinery” (+4.3%), in the manufacture of rubber or plastics products, and other non-metallic mineral products (+2.2%) and in the manufacture of basic metals and fabricated metal products (+0.5%).

**Variation of the Industrial Production**

2005 based, SA-WDA changes in %

NA : A10, (A17), [A38 ou A64]	May 2011	May / April	April / March	Quarter on quarter change
<b>BE: INDUSTRY</b>	<b>95,5</b>	<b>2,0</b>	<b>-0,5</b>	<b>0,1</b>
<b>CZ: MANUFACTURING</b>	<b>95,4</b>	<b>1,5</b>	<b>0,1</b>	<b>0,9</b>
<b>(C1): Man. of food products and beverages</b>	<b>104,8</b>	<b>-0,2</b>	<b>0,9</b>	<b>1,4</b>
<b>(C2): Man. of coke and refined petroleum products</b>	<b>75,4</b>	<b>3,4</b>	<b>-7,5</b>	<b>-5,8</b>
<b>(C3): Electrical and electronic equipment; machine equipment</b>	<b>95,1</b>	<b>2,3</b>	<b>0,8</b>	<b>1,6</b>
[CI] Man. of computer, electronic and optical products	94,2	1,2	-0,6	-1,4
[CJ] Man. of electrical equipment	107,0	3,0	0,7	2,7
[CK] Man. of machinery and equipment n.e.c. (1)	88,8	2,5	1,8	3,2
<b>(C4): Man. of transport equipment</b>	<b>91,2</b>	<b>2,6</b>	<b>-0,1</b>	<b>-1,9</b>
[CL1] Man. of motor vehicles, trailers and semi-trailers	72,4	2,5	-2,6	-4,6
[CL2] Man. of other transport equipment	129,5	2,5	2,9	1,6
<b>(C5): Other manufacturing</b>	<b>95,0</b>	<b>1,4</b>	<b>-0,1</b>	<b>1,6</b>
[CB] Man. of textiles, wearing apparel, leather and related products	64,7	1,3	0,6	1,8
[CC] Man. of wood and paper products; printing and reproduction of recorded media	82,4	0,6	-0,2	-0,3
[CE] Man. of chemicals and chemical products	115,7	0,3	-1,2	3,1
[CF] Man. of basic pharmaceutical products and pharmaceutical preparations	116,4	0,5	0,7	2,9
[CG] Man. of rubber and plastics products, and other non-metallic mineral products	92,3	2,2	-1,3	2,2
[CH] Man. of basic metals and fabricated metal products, except machinery and equipment	83,7	0,5	-0,7	0,1
[CM] Other manufacturing; repair and installation of machinery and equipment	112,7	4,3	1,9	2,0
<b>(DE): Mining and quarrying; energy; water supply; waste management</b>	<b>96,4</b>	<b>5,7</b>	<b>-4,3</b>	<b>-5,3</b>
[BZ] Mining and quarrying	90,3	2,4	-1,1	2,1
[DZ] Electricity, gas, steam and air-conditioning supply	95,7	6,0	-5,3	-6,6
[EZ] Water supply; sewerage, waste management and remediation	107,7	5,2	3,4	2,1
<b>FZ: Construction</b>	<b>95,8</b>	<b>-1,0</b>	<b>1,3</b>	<b>3,3</b>
<b>MIGs (2)</b>				
Capital goods	86,4	3,2	0,8	0,4
Intermediate goods	84,9	0,7	-0,8	1,0
Consumer durables	78,4	1,7	-0,7	-0,2
Consumer non-durables	105,4	0,4	0,7	2,1

(1) n.e.c. : not elsewhere classifiable

(2) Main industrial groupings : definition in Commission regulation EC of 14 June 2007

Sources : Insee, SSP, SOeS

**Learn more :**

- Complementary data (long series) and metadata (methodology, linked internet pages...) are available on the HTML page of this index : <http://www.insee.fr/en/themes/info-rapide.asp?id=10>
- Historical data are available on the BDM : [G950](#), [G951](#), [G952](#), [G953](#), [G963](#).
- Press contact : [bureau-de-presse@insee.fr](mailto:bureau-de-presse@insee.fr)

**... in the manufacture of electrical or electronic equipment and machine equipment (+2.3%) ...**

The output increased in the manufacture of machinery and equipment n.e.c. (+2.5%), in the manufacture of electrical equipment (+3.0%) and in the manufacture of computer, electronic and optical products (+1.2%).

**... as well as in the manufacture of transport equipment (+2.6%)**

The output increased in the manufacture of motor vehicles, trailers and semi-trailers and in the manufacture of other transport equipment (+2.5%).

**• Revisions : -0.11 point in April**

**In April 2011, the manufacturing output was barely stable (+0.1%)**

The revisions are due to the revision of raw series in the manufacture of computer, electronic and optical products and in the “other manufacturing, repair and installation of machinery”.

**Measure of variations' revisions**

(in point %)

	April / March	March / Feb.	Feb. / Jan.	Q1 2011 / Q4 2010	2010 / 2009
<b>Industry (BE)</b>	<b>-0,21</b>	<b>0,21</b>	<b>0,11</b>	<b>0,25</b>	<b>0,00</b>
raw serie	-0,37	0,11	0,00	0,03	0,00
SA-WDA coefficient	0,16	0,10	0,11	0,22	0,00
<b>Manufacturing (CZ)</b>	<b>-0,11</b>	<b>0,21</b>	<b>0,00</b>	<b>0,25</b>	<b>-0,01</b>
raw serie	-0,38	0,11	0,00	0,00	0,01
SA-WDA coefficient	0,27	0,10	0,00	0,25	-0,02

Note of reading : in the manufacturing, the SA-WDA evolution between March and April is revised by -0.11 point : -0.38 is due to the raw serie's revision and 0.27 to the new calculation of the SA-WDA.

Sources : Insee, SSP, SOeS