

Informations *Rapides*



1 juillet 2011 - n° 169 **CONJONCTURE**

■ Turnover in the retail trade and personal services - April 2011

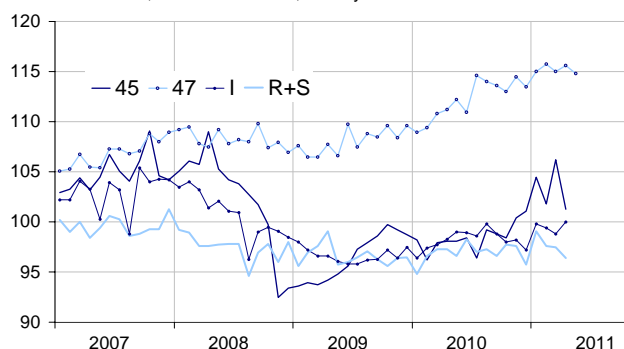
In April 2011, the turnover bounced back in the trade and repair of motor vehicles and motorcycles but went up in accommodation and food service activities

Every index in this issue is in volume, seasonally and working-day adjusted.

In April 2011, the turnover strongly declined in the *trade and repair of motor vehicles and motorcycles* (−4.6%). It also decreased in *household services* (−1.1%) whereas it bounced in *accommodation and food service activities* (+1.2%) and in the *retail trade, except of motor vehicles and motorcycles* (+0.5%).

Retail trade and personal services

Turnover indices, volume SA-WDA, Base year 2005



Source : INSEE

Please note that the « retail trade... » chart (47) includes the early estimate for May 2011.

Quarter on quarter (q-o-q), the turnover rose in the *trade and repair of motor vehicles and motorcycles* (+1.1%), in *accommodation and food service activities* (+1.0%) and in the «*retail trade...*» (+1.0%). It was down in *household services* (−0.3%).

Year on year (y-o-y), the turnover grew in the *trade and repair of motor vehicles and motorcycles* (+5.9%), in the «*retail trade...*» (+4.5%) and, to a lesser extent, in *accommodation and food services activities* (+1.6%). It was broadly stable in *households services* (+0.1%).

According to our estimate, the turnover in the «*retail trade...*» is expected to weaken in May 2011 (−0.7%).

The SA-WDA evolution in March has been revised by −0.5 point in *household services*. The variation, initially announced at +0.4 %, has been corrected at −0.1 %. In the same period, the SA-WDA evolution has been revised by +0.3 point in *trade and repair of motor vehicles and motorcycles*, −0.3 point in *accommodation and food service activities* and −0.1 point in the «*retail trade...*».

Monthly turnover indices

SA-WDA volume, Base year 2005

Classification NAF rev. 2	Weight	Change in %			
		April/ March	March/ Feb.	q-o-q (1)	y-o-y (2)
45 Trade and repair of motor vehicles and motorcycles	1000	−4.6	4.3	1.1	5.9
47 Retail trade, except of motor vehicles and motorcycles	1000	0.5	−0.6	1.0	4.5
471 Retail sale in non-specialised stores	415	0.5	−0.2	−0.1	2.5
472 to 477 Retail sale in specialised stores	545	0.6	−0.6	1.6	5.8
478 and 479 Retail trade not in stores	40	0.7	−5.2	1.3	5.4
I Accommodation and food service activities	1000	1.2	−0.6	1.0	1.6
R+S Households services	1000	−1.1	−0.1	−0.3	0.1
R Arts, entertainment and recreation	472	−1.6	−0.3	−0.4	0.9
S Other service activities	528	−0.6	0.0	−0.1	−0.6

(1) Quarter-on-quarter: last three months / three previous months.

(2) Year-on-year: last three months / three same months of the previous year.

The codes correspond to different levels of aggregation of the classification NAF rev.2.

Source: INSEE

Turnover indices: early estimate*

SA-WDA volume, Base year 2005

	Change in %	
	May 2011/April 2011	May 2011/May 2010
47 Retail trade...	−0.7	2.2

* Econometric estimate from a set of sources available within 30 days after the end of the reference month

Source: INSEE