

# Informations *Rapides*



1 juin 2011 - n° 142 **CONJONCTURE**

## ■ Turnover in the wholesale trade and business services - March 2011

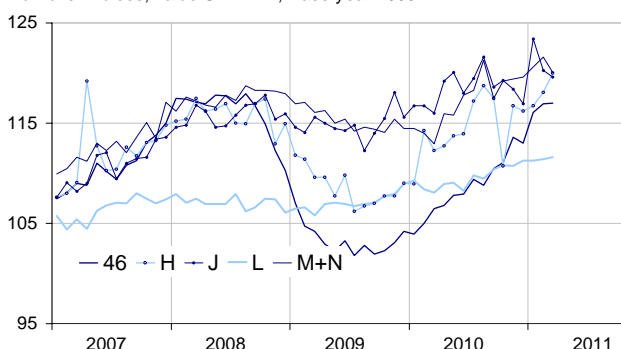
### In March 2011, the turnover rose in transportation and storage but decreased in business support activities

Every index in this issue is in value, seasonally and working-day adjusted.

In March 2011, the turnover rose in *transportation and storage* (+1.6%) and, to a lesser extent, in *real estate activities* (+0.2%). It was broadly stable in the "*wholesale trade...*" (+0.1%) whereas it fell in *business support activities* (-1.2%) and in *information and communication* (-0.6%).

#### Wholesale trade and business service

Turnover indices, value SA-WDA, Base year 2005



Source : INSEE

Quarter on quarter (q-o-q), the turnover increased : by 3.6% in the "*wholesale trade...*", by 3.3% in *transportation and storage*, by 2.5% in *information and communication*, by 1.1% in *business support activities*, and by 0.5% in *real estate activities*.

Year on year (y-o-y), the turnover was up by 11.0% in the "*wholesale trade...*". It also increased in *business support activities* (+6.1 %), in *transportation and storage* (+5.8 %), in *information and communication* (+4.0%) and in *real estate activities* (+2.6%).

The SA-WDA evolution in February has been revised by +0.6 point in *information and communication*. The decrease, initially announced at -3.1%, is corrected at -2.5%. In the same period, the SA-WDA evolution has been revised by +0.3 point in *transportation and*

*storage* and by +0.2 point in *business support activities*. The turnover's variation has been confirmed in the "*wholesale trade...*" and in *real estate activities*.

#### Monthly turnover indices

SA-WDA value, Base year 2005

Classification NAF rev. 2	Weight	Change in %			
		March/ Feb.	Feb./ Jan.	q-o-q (1)	y-o-y (2)
<b>46 Wholesale trade, except of motor vehicles and motorcycles</b>	<b>1000</b>	<b>0.1</b>	<b>0.7</b>	<b>3.6</b>	<b>11.0</b>
Wholesale on a fee or contract basis	166	-0.9	1.5	0.1	5.5
Wholesale of agricultural raw materials and live animals	62	-0.3	1.7	8.4	32.3
Wholesale of food, beverages and tobacco	183	-0.4	1.3	2.7	7.4
Wholesale of household goods	173	1.2	1.0	-0.2	3.9
Wholesale of professional equipment goods	215	0.6	-3.7	4.1	11.7
Other specialised wholesale	193	0.2	3.3	8.7	18.3
<b>H Transportation and storage</b>	<b>1000</b>	<b>1.6</b>	<b>1.2</b>	<b>3.3</b>	<b>5.8</b>
<b>J Information and communication</b>	<b>1000</b>	<b>-0.6</b>	<b>-2.5</b>	<b>2.5</b>	<b>4.0</b>
<b>L Real estate activities</b>	<b>1000</b>	<b>0.2</b>	<b>0.1</b>	<b>0.5</b>	<b>2.6</b>
<b>M+N Business support activities</b>	<b>1000</b>	<b>-1.2</b>	<b>0.8</b>	<b>1.1</b>	<b>6.1</b>
M Professional, scientific and technical activities	626	-2.5	2.0	0.5	5.3
N Administrative and support service activities	374	1.0	-1.2	2.3	7.5

(1) Quarter-on-quarter: last three months / three previous months.

(2) Year-on-year: last three months / three same months of the previous year.

The codes correspond to different levels of aggregation of the classification NAF rev. 2.

Source : INSEE