

# Informations *Rapides*



10 juin 2011 - n° 145 **CONJONCTURE**

## Main indicators

### Industrial Production Indices – April 2011

## In April 2011, manufacturing output slightly increased (+0.2%)

In April 2011, the **manufacturing output** increased in volume (+0.2%). It decreased in March 2011 (-1.1%). In the **industry**, output decreased (-0.3%), due to a drop in energy production.

**In the last three months, the manufacturing output increased (+1.5%)...**

In the last three months (quarter-on-quarter change), the output increased in the manufacturing sector (+1.5 %) and in the industry as a whole (+0.3%).

The output increased in the "other manufacturing" (+2.3%, q-o-q), in the *manufacture of transport equipment* (+0.6%) and in the *electrical, electronic equipment and machine equipment* (+0.5%).

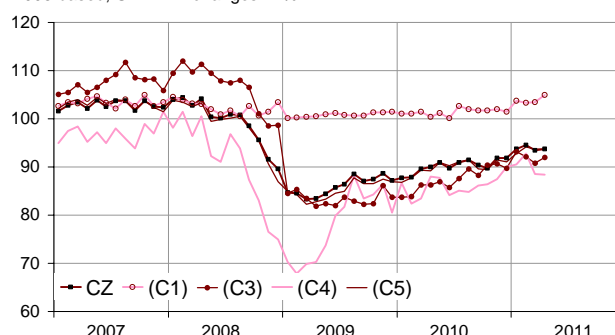
### ...and exceeded it's last year's level by 5.3%

The manufacturing output rose by 5.3% (y-o-y). It soared in the "other manufacturing" (+5.7%), in the *electrical and electronic equipment and machine equipment* (+7.2%) and in the *manufacture of transport equipment* (+6.3%).

*Please note: all the data are adjusted for seasonal variations (SA) and the number of working days (WDA).*

### Monthly industrial Production indexes

2005 based, SA-WDA changes in %



Legend : CZ : Manufacturing - (C1) : Manufacture of food products and beverages - (C3) : Electrical and electronic equipment; machine equipment - (C4) : Manufacture of transport equipment - (C5) : Other manufacturing

Sources : INSEE, SSP, SoeS

### Variation of the Industrial Production by activity (NA)

2005 based, SA-WDA changes in %

NA : A10, (A17)	April / March	March / Feb.	Quarter on quarter change	Year on year change (1)
<b>BE: INDUSTRY</b>	-0,3	-1,1	0,3	3,9
<b>CZ: MANUFACTURING</b>	0,2	-1,1	1,5	5,3
(C1): Manufacture of food products and beverages	1,4	0,2	1,5	2,9
(C2): Manufacture of coke and refined petroleum products	-7,5	-2,0	-4,3	-9,5
(C3): Electrical and electronic equipment; machine equipment	1,3	-1,4	0,5	7,2
(C4): Manufacture of transport equipment	-0,1	-4,6	0,6	6,3
(C5): Other manufacturing	-0,1	-0,3	2,3	5,7
<b>(DE): Mining and quarrying; energy; water supply; waste management</b>	-4,3	-1,1	-7,1	-5,1
<b>FZ: Construction</b>	0,7	-1,0	4,8	2,9

(1) Last three months / three same months of previous year  
The codes correspond to the level of aggregation A 10 (A 17) of the "NA" aggregate classification based on NAF rev.2.

Sources : INSEE, SSP, SOeS

**In April 2011, the output increased in the Manufacture of electrical or electronic equipment and machine equipment (+1.3%)**

The output increased in the manufacture of computer, electronic and optical products (+2.1%), in the manufacture of machinery and equipment n.e.c. (+1.0%) and in the manufacture of electrical equipment (+0.9%).

**Variation of the Industrial Production**

2005 based, SA-WDA changes in %

NA : A10, (A17), [A38 ou A64]	April 2011	April / Marc h	March / Feb.	Quarter on quarter change
<b>BE: INDUSTRY</b>	<b>93,4</b>	<b>-0,3</b>	<b>-1,1</b>	<b>0,3</b>
<b>CZ: MANUFACTURING</b>	<b>93,7</b>	<b>0,2</b>	<b>-1,1</b>	<b>1,5</b>
<b>(C1): Man. of food products and beverages</b>	<b>105,0</b>	<b>1,4</b>	<b>0,2</b>	<b>1,5</b>
<b>(C2): Man. of coke and refined petroleum products</b>	<b>72,5</b>	<b>-7,5</b>	<b>-2,0</b>	<b>-4,3</b>
<b>(C3): Electrical and electronic equipment; machine equipment</b>	<b>92,0</b>	<b>1,3</b>	<b>-1,4</b>	<b>0,5</b>
[CI] Man. of computer, electronic and optical products	93,4	2,1	-3,4	-0,5
[CJ] Man. of electrical equipment	103,4	0,9	0,1	1,2
[CK] Man. of machinery and equipment n.e.c. (1)	84,3	1,0	-0,8	0,8
<b>(C4): Man. of transport equipment</b>	<b>88,4</b>	<b>-0,1</b>	<b>-4,6</b>	<b>0,6</b>
[CL1] Man. of motor vehicles, trailers and semi-trailers	70,6	-2,2	-4,9	-2,1
[CL2] Man. of other transport equipment	124,6	2,5	-4,4	4,1
<b>(C5): Other manufacturing</b>	<b>93,7</b>	<b>-0,1</b>	<b>-0,3</b>	<b>2,3</b>
[CB] Man. of textiles, wearing apparel, leather and related products	63,7	0,8	1,6	1,0
[CC] Man. of wood and paper products; printing and reproduction of recorded media	81,5	-0,7	-0,4	-0,3
[CE] Man. of chemicals and chemical products	114,9	-1,4	1,6	4,7
[CF] Man. of basic pharmaceutical products and pharmaceutical preparations	115,1	0,6	1,0	3,0
[CG] Man. of rubber and plastics products, and other non-metallic mineral products	89,9	-1,2	-0,8	3,7
[CH] Man. of basic metals and fabricated metal products, except machinery and equipment	84,1	-0,2	-0,5	1,8
[CM] Other manufacturing; repair and installation of machinery and equipment	108,4	1,8	-2,3	0,9
<b>(DE): Mining and quarrying; energy; water supply; waste management</b>	<b>91,0</b>	<b>-4,3</b>	<b>-1,1</b>	<b>-7,1</b>
[BZ] Mining and quarrying	88,2	0,8	-0,9	1,5
[DZ] Electricity, gas, steam and air-conditioning supply	90,0	-5,6	-1,2	-8,5
[EZ] Water supply; sewerage, waste management and remediation	102,1	2,9	-0,6	-0,1
<b>FZ: Construction</b>	<b>97,0</b>	<b>0,7</b>	<b>-1,0</b>	<b>4,8</b>
<b>MIGs (2)</b>				
Capital goods	86,4	0,8	-3,2	0,9
Intermediate goods	84,9	-0,3	-0,2	2,0
Consumer durables	78,4	-0,7	0,0	-0,5
Consumer non-durables	105,4	0,8	0,5	2,3

(1) n.e.c. : not elsewhere classifiable

(2) Main industrial groupings : definition in Commission regulation EC of 14 June 2007

Sources : Insee, SSP, SOeS

**Nevertheless, output was barely stable in the « other manufacturing » (-0.1%)...**

The output slightly decreased in the manufacture of rubber or plastics products, and other non-metallic mineral products (-1,2%), in the manufacture of chemicals and chemical products (-1.4%), in the manufacture of wood and paper products; printing and reproduction of recorded media (-0.7%) and in the manufacture of basic metals and fabricated metal products (-0.2%).

However, it increased in the "other manufacturing, repair and installation of machinery" (+1.8%), in the manufacture of basic pharmaceutical products and pharmaceutical preparations (+0.6%) and in the manufacture of textile (+0.8%).

**... as well as in the manufacture of transport equipment (-0.1%)**

The output decreased in the manufacture of motor vehicles, trailers and semi-trailers (-2.2%).

In the other hand, it increased in the manufacture of other transport equipment (+2.5%).

**• Revisions : -0.11 point in March**

**In March 2011, the manufacturing output decreased by 1.1%**

The revisions are due to the new calculation of the SA-WDA.

**Measure of variations' revisions**

(in point %)

	March / Feb.	Feb. / Jan.	Jan. / Dec.	Q1 2011 / Q4 2010	2010 / 2009
<b>Industry (BE)</b>	<b>-0,11</b>	<b>-0,10</b>	<b>-0,11</b>	<b>-0,21</b>	<b>-0,03</b>
raw serie	0,01	-0,32	0,11	0,03	0,01
SA-WDA coefficient	-0,12	0,22	-0,22	-0,24	-0,04
<b>Manufacturing (CZ)</b>	<b>-0,11</b>	<b>-0,11</b>	<b>0,11</b>	<b>0,00</b>	<b>-0,04</b>
raw serie	0,01	-0,34	0,22	0,11	-0,04
SA-WDA coefficient	-0,12	0,23	-0,11	-0,11	0,00

Note of reading : in the manufacturing, the SA-WDA evolution between February and March is revised by -0.11 point : +0.01 is due to the raw serie's revision and -0.12 to the new calculation of the SA-WDA.

Sources : Insee, SSP, SOeS

**Learn more :**

- Complementary data (long series) and metadata (methodology, linked internet pages...) are available on the HTML page of this index : <http://www.insee.fr/en/themes/info-rapide.asp?id=10>
- Historical data are available on the BDM : [G950](#), [G951](#), [G952](#), [G953](#), [G963](#).
- Press contact : [bureau-de-presse@insee.fr](mailto:bureau-de-presse@insee.fr)

Next issue: July 11 2011, 8:45 AM