

Informations Rapides



10 mars 2011 - n° 63 **CONJONCTURE**

Main indicators

■ Industrial Production Indices – January 2011

In January 2011, manufacturing output increased (+1.8%)

In January 2011, **manufacturing output** increased in volume (+1.8%). It was almost stable in December 2010 (-0.2%). It was mainly driven by output of intermediate goods that meets the demands of Construction, rebounding after the trough of December due to climatic conditions.

In the **industry**, output increased as well (+1.0%); in January, the decrease in energy was due to a lower consumption of gas and electricity, still in line with the climatic conditions

In the last three months (quarter-on-quarter change), the output increased in the manufacturing sector (+2.0 %) and in the industry as a whole (+2.2%).

In the last three months, manufacturing output increased (+2.0%)...

In the last three months, the output increased in the "other manufacturing" (+1.6%, q-o-q), in the *manufacture of transport equipment* (+4.4%), in the *electrical, electronic equipment and machine equipment* (+2.4%) and in the *manufacture of coke and refined petroleum products* (+14.8%). It remained stable in the *manufacture of food products and beverages* (-0.1%).

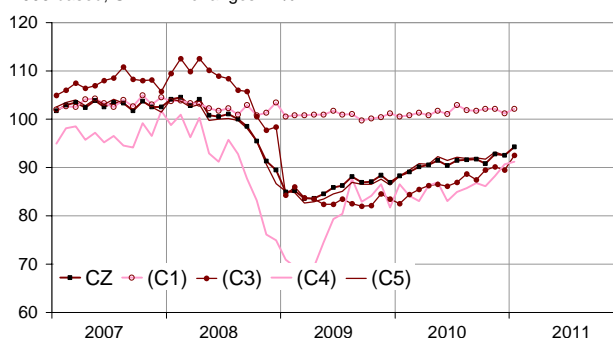
...and exceeded it's last year's level by 6.1%

Manufacturing output rose by 6.1% (y-o-y). It soared in the "other manufacturing" (+6.7%), in the *electrical and electronic equipment and machine equipment* (+8.6%) and in the *manufacture of transport equipment* (+6.0%).

Please note: all the data are adjusted for seasonal variations (SA) and the number of working days (WDA).

Monthly Industrial Production indexes

2005 based, SA-WDA changes in %



Legend : CZ : Manufacturing - (C1) : Manufacture of food products and beverages - (C3) : Electrical and electronic equipment; machine equipment - (C4) : Manufacture of transport equipment - (C5) : Other manufacturing

Sources : INSEE, SSP, SOeS

Variation of Industrial Production

2005 based, SA-WDA changes in %

	Jan. / Dec.	Dec. / Nov.	Quarter on quarter change	Year on year change (1)
NA : A10, (A17)				
BE: INDUSTRY	1,0	0,2	2,2	6,1
CZ: MANUFACTURING	1,8	-0,2	2,0	6,1
(C1): Manufacture of food products and beverages	0,9	-0,9	-0,1	1,1
(C2): Manufacture of coke and refined petroleum products	-0,6	1,8	14,8	8,4
(C3): Electrical and electronic equipment; machine equipment	3,5	-0,8	2,4	8,6
(C4): Manufacture of transport equipment	0,6	2,8	4,4	6,0
(C5): Other manufacturing	1,9	-0,8	1,6	6,7
(DE): Mining and quarrying; energy; water supply; waste management	-4,0	3,1	3,6	6,2
FZ: Construction	7,9	-5,9	-0,8	-1,6

(1) Last three months / three same months of previous year
The codes correspond to the level of aggregation A 10 (A 17) of the "NA" aggregate classification based on NAF rev.2.

Sources : INSEE, SSP, SOeS

Variation of Industrial Production by activity (NA)

2005 based, SA-WDA changes in %

NA : A10, (A17), [A38 ou A64]	Jan. 2011	Jan. / Dec.	Dec. / Nov.	Quarter on quarter change
BE: INDUSTRY	95,1	1,0	0,2	2,2
CZ: MANUFACTURING	94,3	1,8	-0,2	2,0
(C1): Man. of food products and beverages	102,1	0,9	-0,9	-0,1
(C2): Man. of coke and refined petroleum products	78,4	-0,6	1,8	14,8
(C3): Electrical and electronic equipment; machine equipment	92,5	3,5	-0,8	2,4
[CI] Man. of computer, electronic and optical products	97,1	8,0	-1,3	4,3
[CJ] Man. of electrical equipment	102,9	2,8	-1,9	2,1
[CK] Man. of machinery and equipment n.e.c. (1)	83,3	0,6	0,4	1,1
(C4): Man. of transport equipment	91,2	0,6	2,8	4,4
[CL1] Man. of motor vehicles, trailers and semi-trailers	76,2	1,5	0,3	8,3
[CL2] Man. of other transport equipment	121,6	-0,7	6,2	-0,2
(C5): Other manufacturing	94,3	1,9	-0,8	1,6
[CB] Man. of textiles, wearing apparel, leather and related products	62,2	0,6	-1,3	1,2
[CC] Man. of wood and paper products; printing and reproduction of recorded media	83,0	3,0	-1,6	0,0
[CE] Man. of chemicals and chemical products	113,6	2,7	0,0	3,8
[CF] Man. of basic pharmaceutical products and pharmaceutical preparations	123,4	-0,2	-0,6	-2,2
[CG] Man. of rubber and plastics products, and other non-metallic mineral products	91,8	8,5	-2,3	3,1
[CH] Man. of basic metals and fabricated metal products, except machinery and equipment	83,7	1,5	-0,4	2,8
[CM] Other manufacturing; repair and installation of machinery and equipment	106,0	-2,3	-0,4	0,7
(DE): Mining and quarrying; energy; water supply; waste management	100,8	-4,0	3,1	3,6
[BZ] Mining and quarrying	84,9	9,4	-11,3	-5,7
[DZ] Electricity, gas, steam and air-conditioning supply	102,4	-5,1	4,5	4,4
[EZ] Water supply; sewerage, waste management and remediation	99,3	-1,1	1,5	2,8
FZ: Construction	95,5	7,9	-5,9	-0,8
MIGs (2)				
Capital goods	86,4	0,6	0,9	2,4
Intermediate goods	84,9	4,3	-1,5	2,8
Consumer durables	78,4	0,7	1,5	-2,5
Consumer non-durables	105,4	0,6	-0,6	-0,1

(1) n.e.c. : not elsewhere classifiable

(2) Main industrial groupings : definition in Commission regulation EC of 14 June 2007

Sources : Insee, SSP, SOeS

In January 2011, output increased in the « other manufacturing » (+1.9%)...

Output strongly increased in the *manufacture of rubber or plastics products, and other non-metallic mineral products* (+8,5%). It also increased in the *manufacture of basic metals and fabricated metal products* (+1.5%), in the *manufacture of chemicals and chemical products* (+2.7%) and in the *manufacture of wood and paper products; printing and reoutput of recorded media* (+3.0%).

In the other hand, output decreased in the “*other manufacturing, repair and installation of machinery*” (-2.3%).

...in the manufacture of electrical or electronic equipment and machine equipment (+3.5%)...

Output strongly increased in the *manufacture of computer, electronic and optical products* (+8.0%). It also increased in the *manufacture of electrical equipment* (+2.8%) and more slightly in *manufacture of machinery and equipment n.e.c.* (+0.6%).

...and slightly increased in the manufacture of transport equipment (+0.6%)

Output increased in the *manufacture of motor vehicles, trailers and semi-trailers* (+1.5%) and decreased in the *manufacture of other transport equipment* (-0.7%).

• Revisions : -0.11 point in December

In December 2011, manufacturing output was almost stable (-0.2%)

The revision of the raw series, due to delayed firms' answers, especially apply to the *manufacture of machinery and equipment n.e.c.* and to the “*other manufacturing repair and installation of machinery*”. The new calculation of the SA-WDA especially applies to the *manufacture of rubber or plastics products, and other non-metallic mineral products*.

Measure of variations' revisions

(in point %)

	Dec. / Nov.	Nov. / Oct.	Oct. / Sept.	Q4 2010 / Q3 2010	2010 / 2009
Industry (BE)	-0,11	0,00	0,00	0,07	0,01
raw serie	0,21	-0,10	0,00	0,00	-0,01
SA-WDA coefficient	-0,32	0,10	0,00	0,07	0,02
Manufacturing (CZ)	-0,11	0,00	0,00	0,07	-0,01
raw serie	0,21	-0,20	0,10	0,04	0,01
SA-WDA coefficient	-0,32	0,20	-0,10	0,03	-0,02

Note of reading : in the manufacturing, the SA-WDA evolution between November and December is revised by -0.11 point : 0.21 is due to the raw serie's revision and -0.32 to the new calculation of the SA-WDA.

Sources : Insee, SSP, SOeS

Learn more :

- Complementary data (long series) and metadata (methodology, linked internet pages...) are available on the HTML page of this index : <http://www.insee.fr/en/themes/info-rapide.asp?id=10>
- Historical data are available on the BDM : [G950](#), [G951](#), [G952](#), [G953](#), [G963](#).
- Press contact : bureau-de-presse@insee.fr

Next issue: April 11 2011, 8:45 AM