

Informations *Rapides*



2 mars 2011 - n° 58 **CONJONCTURE**

■ Turnover in the retail trade and personal services - December 2010

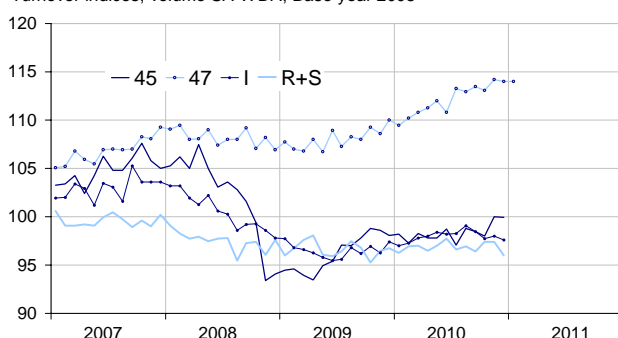
In December 2010, the turnover decreased in the retail trade and personal services

Every index in this issue is in volume, seasonally and working-day adjusted.

In December 2010, the turnover declined in *household services* (−1.4%) and, to a lesser extent, in *accommodation and food service* (−0.4%) and in the *retail trade, except of motor vehicles and motorcycles* (−0.2%). It was broadly stable in the *trade and repair of motor vehicles and motorcycles* (−0.1%).

Retail trade and personal services

Turnover indices, volume SA-WDA, Base year 2005



Source : INSEE

Please note that the « retail trade... » chart (47) includes the early estimate for January 2011.

Quarter on quarter (q-o-q), the turnover increased in the “*retail trade...*” (+1.2%), in the *trade and repair of motor vehicles and motorcycles* (+0.5%) and in *household services* (+0.3%). It declined in *accommodation and food service activities* (−0.9%).

Year on year (y-o-y), the turnover grew in the “*retail trade...*” (+4.1%), in *accommodation and food services activities* (+0.9%), in *households services* (+0.8%) and in the *trade and repair of motor vehicles and motorcycles* (+0.8%).

According to our estimate, the turnover in the “*retail trade...*” is expected to be stable in January 2011 (0.0%).

The SA-WDA evolution in November has been revised by +0.1 point in the “*retail trade...*” and by −0.1 point in the *trade and repair of motor vehicles and motorcycles* and in *household services*. In the same period, the turnover's variation has been confirmed in *accommodation and food service activities*.

Monthly turnover indices

SA-WDA volume, Base year 2005

Classification NAF rev. 2	Weight	Change in %			
		Dec./Nov.	Nov./Oct.	q-o-q (1)	y-o-y (2)
45 Trade and repair of motor vehicles and motorcycles	1000	−0.1	2.0	1.2	0.8
47 Retail trade, except of motor vehicles and motorcycles	1000	−0.2	1.0	0.5	4.1
471 Retail sale in non-specialized stores	415	−0.2	1.2	0.5	2.9
472 to 477 Retail sale in specialized stores	545	−0.1	0.9	0.4	5.0
478 and 479 Retail trade not in stores	40	0.7	1.6	0.1	1.9
I Accommodation and food service activities	1000	−0.4	0.3	−0.9	0.9
R+S Households services	1000	−1.4	0.0	0.3	0.8
R Arts, entertainment and recreation	472	−1.3	−0.5	0.6	1.9
S Other service activities	528	−1.5	0.3	0.0	−0.3

(1) Quarter-on-quarter: last three months / three previous months.

(2) Year-on-year: last three months / three same months of the previous year.

The codes correspond to different levels of aggregation of the classification NAF rev.2.

Source: INSEE

Turnover indices: early estimate*

SA-WDA volume, Base year 2005

	Change in %	
	Jan. 2011/Dec. 2010	Jan. 2011/Jan. 2010
47 Retail trade...	0.0	+4.1

* Econometric estimate from a set of sources available within 30 days after the end of the reference month

Source: INSEE