

Informations Rapides



2 mars 2011 - n° 57 **CONJONCTURE**

■ Turnover in the wholesale trade and business services - December 2010

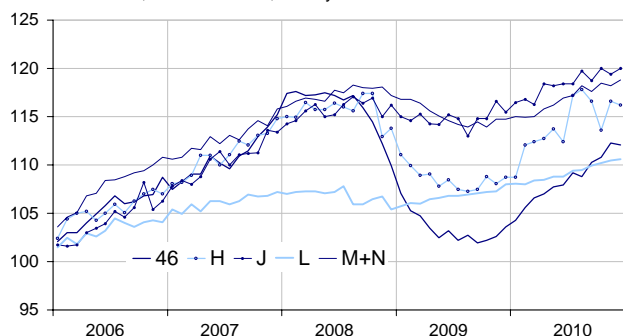
In December 2010, the turnover bounced in information and communication and in business support activities

Every index in this issue is in value, seasonally and working-day adjusted.

In December 2010, the turnover rose in the sector of *information and communication* (+0.5%) and in *business support activities* (+0.5%). It was almost stable in *real estate activities* (+0.1%). Conversely, it slightly declined in the *wholesale trade, except of motor vehicles and motorcycles* (-0.3%) and in *transportation and storage* (-0.2%).

Wholesale trade and business service

Turnover indices, value SA-WDA, Base year 2005



Source : INSEE

Quarter on quarter (q-o-q), the turnover increased : by 2.1% in the “*wholesale trade...*”, by 0.8% in *real estate activities*, and by 0.7% in the sector of *information and communication* and in *business support activities*. Conversely, it dropped in *transportation and storage* (-1.5%).

Year on year (y-o-y), the turnover picked up by 8.7% in the “*wholesale trade...*” and by 6.4% in *transportation and storage*. It also grew in the sector of *information and communication* (+3.6%), in *business support activities* (+3.6%) and in *real estate activities* (+2.7%).

The SA-WDA evolution in November has been revised by -0.2 point in the sector of *information and communication*, by -0.1 point in *transportation and storage* and by +0.1 point in the “*wholesale trade...*”. In the same period, the turnover's variation has been confirmed in the sector of *business support activities* and in *real estate activities*.

Monthly turnover indices

SA-WDA value, Base year 2005

Classification NAF rev. 2	Weight	Change in %			
		Dec./ Nov.	Nov./ Oct.	q-o-q (1)	y-o-y (2)
46 Wholesale trade, except of motor vehicles and motorcycles	1000	-0.2	1.4	2.1	8.7
Wholesale on a fee or contract basis	166	-0.6	0.5	2.9	6.0
Wholesale of agricultural raw materials and live animals	62	0.1	3.9	5.8	21.8
Wholesale of food, beverages and tobacco	183	-1.3	1.1	1.3	6.6
Wholesale of household goods	173	-0.1	0.3	0.8	5.0
Wholesale of professional equipment goods	215	1.4	-0.3	1.4	8.8
Other specialized wholesale	193	-0.4	4.1	2.5	12.1
H Transportation and storage	1000	-0.3	2.6	-1.5	6.4
J Information and communication	1000	0.5	-0.5	0.7	3.6
L Real estate activities	1000	0.1	0.3	0.8	2.7
M+N Business support activities	1000	0.5	-0.3	0.7	3.6
M Professional, scientific and technical activities	626	0.2	-0.2	0.5	2.2
N Administrative and support service activities	374	0.9	-0.1	1.1	6.0

(1) Quarter-on-quarter: last three months / three previous months.

(2) Year-on-year: last three months / three same months of the previous year.

The codes correspond to different levels of aggregation of the classification NAF rev. 2.

Source : INSEE