

# Informations Rapides



10 février 2011 - n° 38 **CONJONCTURE**

**Main indicators**

## ■ Industrial Production Indices – December 2010

### In December 2010, the manufacturing production was almost stable (-0.1%)

In December 2010, the **manufacturing production** was almost stable in volume (-0.1%). It had increased in November (+2.2%). In the **industry**, the production slowly increased (+0.3%).

During the quarter (quarter-on-quarter change), the production increased in the manufacturing sector (+0.4 %) and in the industry as a whole (+0.8%).

#### In the last three months, the manufacturing production increased (+0.4%)...

During the quarter, the production increased in the *manufacture of transport equipment* (+2.8%, q-o-q), in the *electrical, electronic equipment and machine equipment* (+1.7%) and in the “*other manufacturing*” (+0.4%). In the meantime, it remained stable in the *manufacture of food products and beverages* (-0.2%) but strongly decreased in the *manufacture of coke and refined petroleum products* (-22.7%).

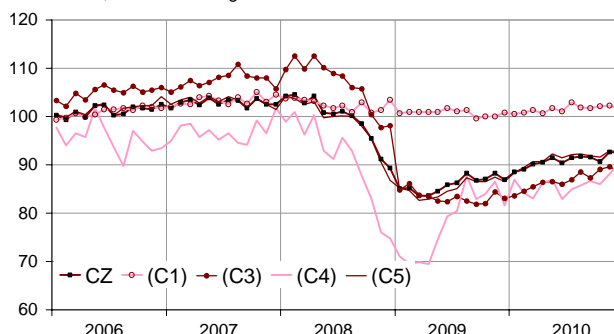
#### ...and exceeded it's last year's level by 5.3%

The manufacturing production rose by 5.3% (y-o-y). It soared in the “*other manufacturing*” (+6.4%), in the *electrical and electronic equipment and machine equipment* (+7.1%) and in the *manufacture of transport equipment* (+4.9%).

*Please note: all the data are adjusted for seasonal variations (SA) and the number of working days (WDA).*

#### Monthly Industrial Production indexes

2005 based, SA-WDA changes in %



Legend : CZ : Manufacturing - (C1) : Manufacture of food products and beverages - (C3) : Electrical and electronic equipment; machine equipment - (C4) : Manufacture of transport equipment - (C5) : Other manufacturing

Sources : INSEE, SSP, SOeS

#### Industrial Production Indexes by activity (NA)

2005 based, SA-WDA changes in %

	Dec. / Nov.	Nov. / Oct.	Quarter on quarter change	Year on year change (1)
<b>NA : A10, (A17)</b>				
<b>BE: INDUSTRY</b>	<b>0,3</b>	<b>2,3</b>	<b>0,8</b>	<b>5,8</b>
<b>CZ: MANUFACTURING</b>	<b>-0,1</b>	<b>2,2</b>	<b>0,4</b>	<b>5,3</b>
(C1): Manufacture of food products and beverages	-0,7	0,1	-0,2	1,8
(C2): Manufacture of coke and refined petroleum products	1,0	108,9	-22,7	-15,2
(C3): Electrical and electronic equipment; machine equipment	-1,1	0,6	1,7	7,1
(C4): Manufacture of transport equipment	2,7	2,4	2,8	4,9
(C5): Other manufacturing	-0,3	1,5	0,4	6,4
<b>(DE): Mining and quarrying; energy; water supply; waste management</b>	<b>3,2</b>	<b>2,5</b>	<b>3,4</b>	<b>9,3</b>
<b>FZ: Construction</b>	<b>-4,1</b>	<b>-0,8</b>	<b>-2,9</b>	<b>-4,5</b>

(1) Last three months / three same months of previous year  
The codes correspond to the level of aggregation A 10 (A 17) of the "NA" aggregate classification based on NAF rev.2.

Sources : INSEE, SSP, SOeS

## Industrial Production Indexes

2005 based, SA-WDA changes in %

NA : A10, (A17), [A38 ou A64]	Dec. 2010	Dec. / Nov.	Nov. / Oct.	Quarter on quarter change
<b>BE: INDUSTRY</b>	<b>94,2</b>	<b>0,3</b>	<b>2,3</b>	<b>0,8</b>
<b>CZ: MANUFACTURING</b>	<b>92,6</b>	<b>-0,1</b>	<b>2,2</b>	<b>0,4</b>
<b>(C1): Man. of food products and beverages</b>	<b>101,6</b>	<b>-0,7</b>	<b>0,1</b>	<b>-0,2</b>
<b>(C2): Man. of coke and refined petroleum products</b>	<b>78,3</b>	<b>1,0</b>	<b>108,9</b>	<b>-22,7</b>
<b>(C3): Electrical and electronic equipment; machine equipment</b>	<b>88,6</b>	<b>-1,1</b>	<b>0,6</b>	<b>1,7</b>
[CI] Man. of computer, electronic and optical products	88,3	-2,0	-0,1	2,6
[CJ] Man. of electrical equipment	99,4	-2,1	2,1	1,3
[CK] Man. of machinery and equipment n.e.c. (1)	82,7	0,2	0,1	1,4
<b>(C4): Man. of transport equipment</b>	<b>90,5</b>	<b>2,7</b>	<b>2,4</b>	<b>2,8</b>
[CL1] Man. of motor vehicles, trailers and semi-trailers	75,0	0,1	7,2	6,2
[CL2] Man. of other transport equipment	122,3	6,2	-2,9	-1,2
<b>(C5): Other manufacturing</b>	<b>92,7</b>	<b>-0,3</b>	<b>1,5</b>	<b>0,4</b>
[CB] Man. of textiles, wearing apparel, leather and related products	61,7	-1,1	2,6	-1,1
[CC] Man. of wood and paper products; printing and reproduction of recorded media	80,3	-1,5	0,4	-0,8
[CE] Man. of chemicals and chemical products	110,0	-0,2	4,5	-0,5
[CF] Man. of basic pharmaceutical products and pharmaceutical preparations	124,2	-0,5	-0,6	-2,3
[CG] Man. of rubber and plastics products, and other non-metallic mineral products	85,2	-1,0	1,1	1,6
[CH] Man. of basic metals and fabricated metal products, except machinery and equipment	82,3	-0,6	2,6	1,2
[CM] Other manufacturing; repair and installation of machinery and equipment	109,8	1,3	0,7	1,3
<b>(DE): Mining and quarrying; energy; water supply; waste management</b>	<b>105,2</b>	<b>3,2</b>	<b>2,5</b>	<b>3,4</b>
[BZ] Mining and quarrying	78,6	-11,1	1,3	-5,6
[DZ] Electricity, gas, steam and air-conditioning supply	108,1	4,5	3,0	4,2
[EZ] Water supply; sewerage, waste management and remediation	100,5	1,6	-0,9	2,6
<b>FZ: Construction</b>	<b>88,2</b>	<b>-4,1</b>	<b>-0,8</b>	<b>-2,9</b>
<b>MIGs (2)</b>				
Capital goods	86,4	1,0	1,4	1,7
Intermediate goods	84,9	-1,3	2,2	0,9
Consumer durables	78,4	1,7	-1,9	-1,2
Consumer non-durables	105,4	-0,6	0,2	-0,4

(1) n.e.c. : not elsewhere classifiable

(2) Main industrial groupings : definition in Commission regulation EC of 14 June 2007

Sources : Insee, SSP, SOeS

### In December 2010, the production decreased in the manufacture of electrical or electronic equipment and machine equipment (-1.1%)...

The production decreased in the *manufacture of computer, electronic and optical products* (-2.0%) and in the *manufacture of electrical equipment* (-2.1%). On the opposite, it slightly increased in *manufacture of machinery and equipment n.e.c.* (+0.2%).

### ...and in the « other manufacturing » (-0.3%)

The production decreased in the *manufacture of rubber or plastics products, and other non-metallic mineral products* (-1,0%), in the *manufacture of basic metals and fabricated metal products* (+0.6%), and in the *manufacture of wood and paper products; printing and reproduction of recorded media* (-1.5%).

It also decreased in the *manufacture of basic pharmaceutical products and pharmaceutical preparations* (-0.5%), in the *manufacture of textile* (-1.1%) and in the *manufacture of chemicals and chemical products* (-0.2%).

In the other hand, it increased in the *repair and installation of machinery and equipment* (+1.3%).

### The production increased in the manufacture of transport equipment (+2.7%)...

The production rose in the *manufacture of other transport equipment* (+6.2%). It was almost stable in the *manufacture of motor vehicles, trailers and semi-trailers* (+0.1%).

### • Revisions : +0.01 point in November

### In November, the manufacturing production had increased (+2.2%)

The revision of the raw series, due to delayed firms' answers, especially apply to the *manufacture of basic pharmaceutical products, manufacture of motor vehicles and manufacture of food products and beverages.*

### Measure of variations' revisions

	Nov. / Oct.	Oct. / Sept.	Sept. / Aug.	Q3 2010 / Q2 2010	2009 / 2008
<b>Industry (BE)</b>	<b>0,01</b>	<b>-0,11</b>	<b>0,00</b>	<b>0,11</b>	<b>-0,04</b>
raw serie	0,00	-0,20	0,82	-0,19	-0,03
SA-WDA coefficient	0,01	0,09	-0,82	0,30	-0,01
<b>Manufacturing (CZ)</b>	<b>0,01</b>	<b>-0,11</b>	<b>0,00</b>	<b>-0,11</b>	<b>-0,07</b>
raw serie	0,09	-0,20	0,92	-0,15	-0,08
SA-WDA coefficient	-0,08	0,09	-0,92	0,04	0,01

Note of reading : in the manufacturing, the SA-WDA evolution between November and October is revised by 0.01 point : 0.09 is due to the raw serie's revision and -0.08 to the new calculation of the SA-WDA.

Sources : Insee, SSP, SOeS

### Learn more :

- Complementary data (long series) and metadata (methodology, linked internet pages...) are available on the HTML page of this index : <http://www.insee.fr/en/themes/info-rapide.asp?id=10>
- Historical data are available on the BDM : [G950](#), [G951](#), [G952](#), [G953](#), [G963](#).
- Press contact : [bureau-de-presse@insee.fr](mailto:bureau-de-presse@insee.fr)

Next issue: March 10 2011, 8:45 AM