

Informations *Rapides*



10 mai 2011 - n° 118 **CONJONCTURE**

Main indicators

Industrial Production Indices – March 2011

In March 2011, manufacturing output decreased (-1.0%)

In March 2011, **manufacturing output** decreased in volume (-1.0%). It has increased in February 2011 (+0.9%).

In the **industry**, output decreased as well (-0.9%).

In the last three months, manufacturing output increased (+3.0%)...

In the last three months (quarter-on-quarter change), the output increased in the manufacturing sector (+3.0 %) and in the industry as a whole (+2.1%). The output increased in the *"other manufacturing"* (+3.1%, q-o-q) and in the *manufacture of transport equipment* (+3.1%) which was boosted by the end of scrap-page bonus. It also increased in the *electrical, electronic equipment and machine equipment* (+2.4%) and in the *manufacture of coke and refined petroleum products* (+21.3%). In this branch, the output during the 2010's last quarter was strongly disrupted by social movements in October.

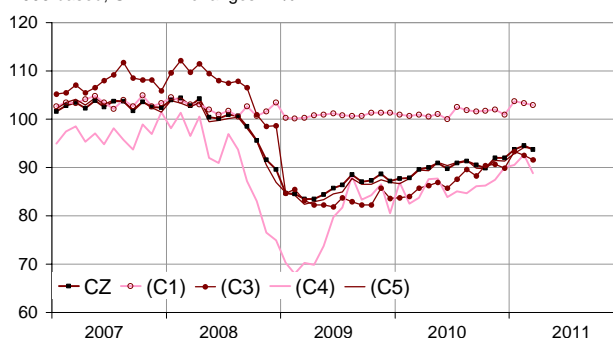
...and exceeded it's last year's level by 6.3%

Manufacturing output rose by 6.3% (y-o-y). It soared in the *"other manufacturing"* (+6.6%), in the *electrical and electronic equipment and machine equipment* (+9.4%) and in the *manufacture of transport equipment* (+7.4%).

Please note: all the data are adjusted for seasonal variations (SA) and the number of working days (WDA).

Monthly industrial Production indexes

2005 based, SA-WDA changes in %



Legend : CZ : Manufacturing - (C1) : Manufacture of food products and beverages - (C3) : Electrical and electronic equipment; machine equipment - (C4) : Manufacture of transport equipment - (C5) : Other manufacturing

Sources : INSEE, SSP, SOeS

Variation of the Industrial Production by activity (NA)

2005 based, SA-WDA changes in %

NA : A10, (A17)	March / Feb.	Feb. / Jan.	Quarter on quarter change	Year on year change (1)
BE: INDUSTRY	-0,9	0,5	2,1	4,9
CZ: MANUFACTURING	-1,0	0,9	3,0	6,3
(C1): Manufacture of food products and beverages	-0,4	-0,5	1,7	2,4
(C2): Manufacture of coke and refined petroleum products	-1,7	-0,5	21,3	0,4
(C3): Electrical and electronic equipment; machine equipment	-1,0	-0,9	2,4	9,4
(C4): Manufacture of transport equipment	-4,2	2,4	3,1	7,4
(C5): Other manufacturing	-0,2	1,4	3,1	6,6
(DE): Mining and quarrying; energy; water supply; waste management	-0,7	-1,2	-3,8	-3,6
FZ: Construction	-0,3	-0,2	6,4	3,9

(1) Last three months / three same months of previous year
The codes correspond to the level of aggregation A 10 (A 17) of the "NA" aggregate classification based on NAF rev.2.

Sources : INSEE, SSP, SOeS

The output decreased in the manufacture of transport equipment (-4.2%) ...

Output decreased in the *manufacture of motor vehicles, trailers and semi-trailers* (-4.3%) and in the *manufacture of other transport equipment* (-4.2%).

Variation of the Industrial Production

2005 based, SA-WDA changes in %

NA : A10, (A17), [A38 ou A64]	March 2011	March / Feb.	Feb. / Jan.	Quarter on quarter change
BE: INDUSTRY	94,1	-0,9	0,5	2,1
CZ: MANUFACTURING	93,7	-1,0	0,9	3,0
(C1): Man. of food products and beverages	102,9	-0,4	-0,5	1,7
(C2): Man. of coke and refined petroleum products	79,1	-1,7	-0,5	21,3
(C3): Electrical and electronic equipment; machine equipment	91,6	-1,0	-0,9	2,4
[CI] Man. of computer, electronic and optical products	92,8	-1,5	-4,5	4,6
[CJ] Man. of electrical equipment	101,8	-0,4	-0,2	1,3
[CK] Man. of machinery and equipment n.e.c. (1)	84,7	-1,2	1,9	1,2
(C4): Man. of transport equipment	88,8	-4,2	2,4	3,1
[CL1] Man. of motor vehicles, trailers and semi-trailers	72,9	-4,3	2,0	2,0
[CL2] Man. of other transport equipment	121,2	-4,2	3,1	4,6
(C5): Other manufacturing	94,0	-0,2	1,4	3,1
[CB] Man. of textiles, wearing apparel, leather and related products	61,3	-0,2	-1,4	0,1
[CC] Man. of wood and paper products; printing and reproduction of recorded media	82,3	-0,1	-1,3	1,3
[CE] Man. of chemicals and chemical products	115,6	0,8	1,0	7,1
[CF] Man. of basic pharmaceutical products and pharmaceutical preparations	116,8	1,0	1,3	3,6
[CG] Man. of rubber and plastics products, and other non-metallic mineral products	90,6	-0,7	0,0	6,3
[CH] Man. of basic metals and fabricated metal products, except machinery and equipment	84,4	-0,5	1,3	3,1
[CM] Other manufacturing; repair and installation of machinery and equipment	108,0	-0,7	5,7	-1,6
(DE): Mining and quarrying; energy; water supply; waste management	96,9	-0,7	-1,2	-3,8
[BZ] Mining and quarrying	87,8	6,8	-4,9	0,1
[DZ] Electricity, gas, steam and air-conditioning supply	97,6	-1,2	-0,9	-4,4
[EZ] Water supply; sewerage, waste management and remediation	98,3	-1,0	-1,3	-0,7
FZ: Construction	96,4	-0,3	-0,2	6,4
MIGs (2)				
Capital goods	86,4	-2,6	2,9	1,7
Intermediate goods	84,9	0,1	-0,2	3,9
Consumer durables	78,4	0,6	-1,0	0,7
Consumer non-durables	105,4	0,1	0,0	2,7

(1) n.e.c. : not elsewhere classifiable

(2) Main industrial groupings : definition in Commission regulation EC of 14 June 2007

Sources : Insee, SSP, SoeS

... in the manufacture of electrical or electronic equipment and machine equipment (-1.0%) ...

Output decreased in the *manufacture of computer, electronic and optical products* (-1.5%), in the *manufacture of machinery and equipment n.e.c.* (-1.2%) and in the *manufacture of electrical equipment* (-0.4%).

... as well as in the « other manufacturing » (-0.2%)

Output slightly decreased in the *manufacture of rubber or plastics products, and other non-metallic mineral products* (-0.7%), the “*other manufacturing, repair and installation of machinery*” (-0.7%), the *manufacture of basic metals and fabricated metal products* (-0.5%). In the other hand, it increased in the *manufacture of chemicals and chemical products* (+0.8%) and in the *manufacture of basic pharmaceutical products and pharmaceutical preparations* (+1.0%).

• Revisions : +0.11 point in February

In February 2011, manufacturing output increased by 0.9%

The raw series' revisions especially apply to the manufacture of basic pharmaceutical products, revised since 2010 to take a better observation of the non- industrials ordering parties.

The industrial production index is henceforth seasonal adjusted with the X12-ARIMA program and no longer with the TRAMO-SEATS program. This method may lead to revisions more important than usually.

Measure of variations' revisions

(in point %)

	Feb. / Jan.	Jan. / Dec.	Dec. / Nov.	Q4 2010 / Q3 2010	2010 / 2009
Industry (BE)	0,11	0,22	0,00	-0,21	-0,61
raw serie	0,31	-0,32	0,31	0,25	-0,60
SA-WDA coefficient	-0,20	0,54	-0,31	-0,46	-0,01
Manufacturing (CZ)	0,11	0,45	0,00	-0,25	-0,69
raw serie	0,35	-0,44	0,40	0,22	-0,69
SA-WDA coefficient	-0,24	0,89	-0,40	-0,47	0,00

Note of reading : in the manufacturing, the SA-WDA evolution between January and February is revised by +0.11 point : +0.35 is due to the raw serie's revision and -0.24 to the new calculation of the SA-WDA.

Sources : Insee, SSP, SOeS

Learn more :

- Complementary data (long series) and metadata (methodology, linked internet pages...) are available on the HTML page of this index : <http://www.insee.fr/en/themes/info-rapide.asp?id=10>
- Historical data are available on the BDM : [G950](#), [G951](#), [G952](#), [G953](#), [G963](#).
- Press contact : bureau-de-presse@insee.fr

Next issue: June 10 2011, 8:45 AM