

Informations Rapides



3 mai 2011 - n° 114 CONJONCTURE

■ Turnover in the retail trade and personal services - February 2011

In February 2011, the turnover decreased in the trade and repair of motor vehicles and motorcycles and households services

Every index in this issue is in volume, seasonally and working-day adjusted.

In February 2011, the turnover bounced back in the *trade and repair of motor vehicles and motorcycles* (-2.1%), in *households services* (-1.4%) and in *accommodation and food service activities* (-0.5%). Conversely, it grew in the *retail trade, except of motor vehicles and motorcycles* (+1.9%).

The SA-WDA evolution in January has been revised by +0.2 point in the “*retail trade...*”, by +0.2 point in *accommodation and food service activities* and by -0.1 point in the *trade and repair of motor vehicles and motorcycles*. In the same period, the turnover has been confirmed in *households services*.

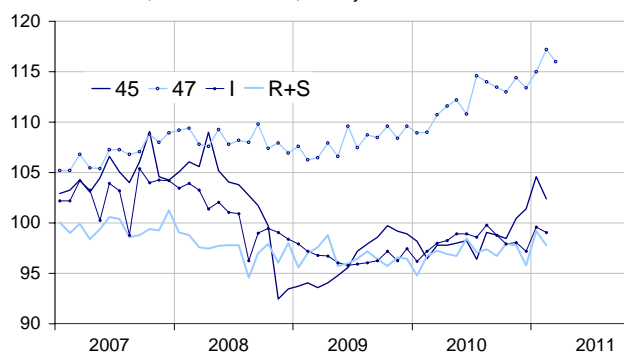
Monthly turnover indices

SA-WDA volume, Base year 2005

Classification NAF rev. 2	Weight	Change in %			
		Feb./Jan.	Jan./Dec.	q-o-q (1)	y-o-y (2)
45 Trade and repair of motor vehicles and motorcycles	1000	-2.1	3.2	3.6	5.0
47 Retail trade, except of motor vehicles and motorcycles	1000	1.9	1.4	1.4	5.5
471 Retail sale in non-specialized stores	415	0.5	0.2	1.0	3.4
472 to 477 Retail sale in specialized stores	545	2.7	2.3	1.4	6.9
478 and 479 Retail trade not in stores	40	2.2	-0.4	4.1	5.4
I Accommodation and food service activities	1000	-0.5	2.5	0.4	1.7
R+S Households services	1000	-1.4	3.5	0.1	1.7
R Arts, entertainment and recreation	472	-1.4	3.1	0.8	3.1
S Other service activities	528	-1.4	4.1	-0.5	0.3

Retail trade and personal services

Turnover indices, volume SA-WDA, Base year 2005



Source : INSEE

Please note that the « retail trade... » chart (47) includes the early estimate for March 2011.

Quarter on quarter (q-o-q), the turnover expanded in the *trade and repair of motor vehicles and motorcycles* (+3.6%), and, to a lesser extent, in the “*retail trade...*” (+1.4%). It slightly went up in *accommodation and food service activities* (+0.4%) whereas it was broadly stable in *household services* (+0.1%).

Year on year (y-o-y), the turnover rose in the “*retail trade...*” (+5.5%), in the *trade and repair of motor vehicles and motorcycles* (+5.0%), in *accommodation and food services activities* (+1.7%) and in *households services* (+1.7%).

According to our estimate, the turnover in the “*retail trade...*” is expected to decline in March 2011 (-1.0%).

(1) Quarter-on-quarter: last three months / three previous months.
(2) Year-on-year: last three months / three same months of the previous year.

The codes correspond to different levels of aggregation of the classification NAF rev.2.

Source: INSEE

Turnover indices: early estimate*

SA-WDA volume, Base year 2005

	Change in %	
	March 2011/ Feb. 2011	March 2011/ March 2010
47 Retail trade...	-1.0	4.8

* Econometric estimate from a set of sources available within 30 days after the end of the reference month

Source: INSEE