

# Informations Rapides



3 mai 2011 - n° 115 **CONJONCTURE**

## ■ Turnover in the wholesale trade and business services - February 2011

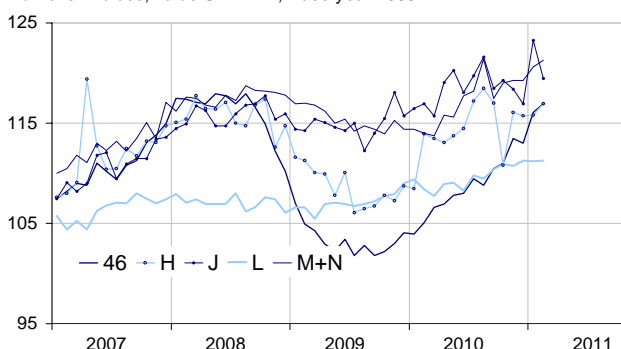
### In February 2011, the turnover increased in transportation and storage, in the wholesale trade and business support activities

Every index in this issue is in value, seasonally and working-day adjusted.

In February 2011, the turnover rose in *transportation and storage* (+0.9%), in the “*wholesale trade...*” (+0.7%) and in *business support activities* (+0.6%). It was broadly steady in *real estate activities* (+0.1%) whereas it dropped in *information and communication* (-3.1%), after a noticeably growth in January (+5.5%).

#### Wholesale trade and business service

Turnover indices, value SA-WDA, Base year 2005



Source : INSEE

Quarter on quarter (q-o-q), the turnover increased : by 3.3% in the “*wholesale trade...*”, by 1.5% in *business support activities*, by 1.3% in *transportation and storage*, by 1.0% in *information and communication* and by 0.5% in *real estate activities*.

Year on year (y-o-y), the turnover picked up by 10.5% in the “*wholesale trade...*”, by 5.4 % in *business support activities* and by 5.2% in *transportation and storage*. It also was up in *information and communication* (+3.0%) and in *real estate activities* (+2.1%).

The SA-WDA evolution in January has been revised by +0.7 point in *information and communication*. The increase, initially announced at +4.8%, is corrected at +5.5%. In the same period, the SA-WDA evolution has been revised by +0.4 point in *transportation and*

*storage*, by -0.3 point in *real estate activities* and by +0.2 point in *business support activities*. The turnover's variation has been confirmed in *real estate activities*.

The revisions of the SA-WDA evolution in January are due to the raw serie's revision.

#### Monthly turnover indices

SA-WDA value, Base year 2005

Classification NAF rev. 2	Weight	Change in %			
		Feb./Jan.	Jan./Dec.	q-o-q (1)	y-o-y (2)
<b>46 Wholesale trade, except of motor vehicles and motorcycles</b>	<b>1000</b>	<b>0.7</b>	<b>2.7</b>	<b>3.3</b>	<b>10.5</b>
Wholesale on a fee or contract basis	166	1.4	-0.4	1.0	5.4
Wholesale of agricultural raw materials and live animals	62	1.4	5.7	7.2	31.6
Wholesale of food, beverages and tobacco	183	1.3	2.0	2.2	6.8
Wholesale of household goods	173	-0.1	0.1	-0.3	4.1
Wholesale of professional equipment goods	215	-2.5	5.1	4.7	11.8
Other specialized wholesale	193	3.2	5.4	6.8	16.3
<b>H Transportation and storage</b>	<b>1000</b>	<b>0.9</b>	<b>0.1</b>	<b>1.3</b>	<b>5.2</b>
<b>J Information and communication</b>	<b>1000</b>	<b>-3.1</b>	<b>5.5</b>	<b>1.0</b>	<b>3.0</b>
<b>L Real estate activities</b>	<b>1000</b>	<b>0.1</b>	<b>-0.1</b>	<b>0.5</b>	<b>2.1</b>
<b>M+N Business support activities</b>	<b>1000</b>	<b>0.6</b>	<b>1.1</b>	<b>1.5</b>	<b>5.4</b>
M Professional, scientific and technical activities	626	1.6	0.0	1.4	4.3
N Administrative and support service activities	374	-1.1	2.8	1.7	7.3

(1) Quarter-on-quarter: last three months / three previous months.

(2) Year-on-year: last three months / three same months of the previous year.

The codes correspond to different levels of aggregation of the classification NAF rev. 2.

Source: INSEE