

Informations *Rapides*



11 avril 2011 - n° 93 **CONJONCTURE**

Main indicators

■ Industrial Production Indices – February 2011

In February 2011, manufacturing output increased (+0.7%)

In February 2011, **manufacturing output** increased in volume (+0.7%). It has also increased in January 2011 (+1.5%).

In the **industry**, output increased as well (+0.4%).

In the last three months (quarter-on-quarter change), the output increased in the manufacturing sector (+2.4 %) and in the industry as a whole (+2.3%).

In the last three months, manufacturing output increased (+2.4%)...

In the last three months, the output increased in the "other manufacturing" (+1.8%, q-o-q), in the *manufacture of transport equipment* (+5.6%), in the *electrical, electronic equipment and machine equipment* (+2.4%) and in the *manufacture of coke and refined petroleum products* (+18.9%).

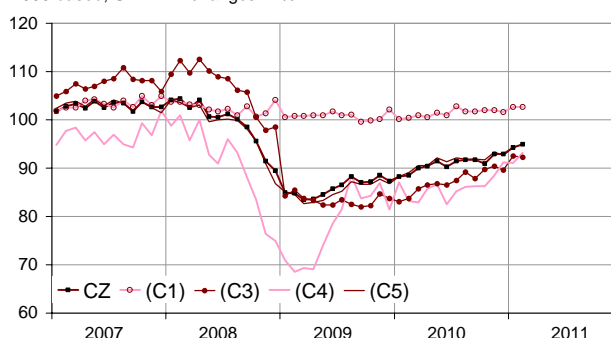
...and exceeded it's last year's level by 6.8%

Manufacturing output rose by 6.8% (y-o-y). It soared in the "other manufacturing" (+6.8%), in the *electrical and electronic equipment and machine equipment* (+9.6%) and in the *manufacture of transport equipment* (+9.5%).

Please note: all the data are adjusted for seasonal variations (SA) and the number of working days (WDA).

Monthly industrial Production indexes

2005 based, SA-WDA changes in %



Legend : CZ : Manufacturing - (C1) : Manufacture of food products and beverages - (C3) : Electrical and electronic equipment; machine equipment - (C4) : Manufacture of transport equipment - (C5) : Other manufacturing

Sources : INSEE, SSP, SOeS

Variation of the Industrial Production by activity (NA)

2005 based, SA-WDA changes in %

NA : A10, (A17)	Feb. / Jan.	Jan. / Dec.	Quarter on quarter change	Year on year change (1)
BE: INDUSTRY	0,4	0,7	2,3	6,0
CZ: MANUFACTURING	0,7	1,5	2,4	6,8
(C1): Manufacture of food products and beverages	0,0	1,1	0,4	1,4
(C2): Manufacture of coke and refined petroleum products	3,3	-0,8	18,9	8,2
(C3): Electrical and electronic equipment; machine equipment	-0,3	3,3	2,4	9,6
(C4): Manufacture of transport equipment	2,3	-0,1	5,6	9,5
(C5): Other manufacturing	0,7	1,7	1,8	6,8
(DE): Mining and quarrying; energy; water supply; waste management	-1,8	-4,1	1,3	1,1
FZ: Construction	-0,1	13,5	-1,6	-0,4

(1) Last three months / three same months of previous year
The codes correspond to the level of aggregation A 10 (A 17) of the "NA" aggregate classification based on NAF rev.2.

Sources : INSEE, SSP, SOeS

Variation of the Industrial Production

2005 based, SA-WDA changes in %

NA : A10, (A17), [A38 ou A64]	Feb. 2011	Feb. / Jan.	Jan. / Dec.	Quarter on quarter change
BE: INDUSTRY	95,5	0,4	0,7	2,3
CZ: MANUFACTURING	95,0	0,7	1,5	2,4
(C1): Man. of food products and beverages	102,7	0,0	1,1	0,4
(C2): Man. of coke and refined petroleum products	80,9	3,3	-0,8	18,9
(C3): Electrical and electronic equipment; machine equipment	92,3	-0,3	3,3	2,4
[CI] Man. of computer, electronic and optical products	94,2	-2,9	7,9	4,7
[CJ] Man. of electrical equipment	103,3	1,3	1,9	1,7
[CK] Man. of machinery and equipment n.e.c. (1)	84,5	0,6	0,7	1,1
(C4): Man. of transport equipment	93,2	2,3	-0,1	5,6
[CL1] Man. of motor vehicles, trailers and semi-trailers	77,1	1,0	0,9	7,0
[CL2] Man. of other transport equipment	126,0	3,8	-1,3	3,8
(C5): Other manufacturing	95,0	0,7	1,7	1,8
[CB] Man. of textiles, wearing apparel, leather and related products	62,0	-0,2	0,5	-0,7
[CC] Man. of wood and paper products; printing and reproduction of recorded media	81,6	-1,8	3,0	0,1
[CE] Man. of chemicals and chemical products	114,9	0,9	2,9	4,4
[CF] Man. of basic pharmaceutical products and pharmaceutical preparations	125,3	0,3	0,1	-0,7
[CG] Man. of rubber and plastics products, and other non-metallic mineral products	91,4	-0,7	8,5	4,2
[CH] Man. of basic metals and fabricated metal products, except machinery and equipment	84,5	1,4	1,0	2,3
[CM] Other manufacturing; repair and installation of machinery and equipment	108,1	3,0	-3,8	0,5
(DE): Mining and quarrying; energy; water supply; waste management	98,7	-1,8	-4,1	1,3
[BZ] Mining and quarrying	82,5	-2,3	9,2	-7,1
[DZ] Electricity, gas, steam and air-conditioning supply	100,1	-2,0	-5,3	2,1
[EZ] Water supply; sewerage, waste management and remediation	98,3	-0,7	-1,2	-0,5
FZ: Construction	96,4	-0,1	13,5	-1,6
MIGs (2)				
Capital goods	86,4	1,9	-0,1	3,1
Intermediate goods	84,9	0,1	4,1	2,7
Consumer durables	78,4	-0,7	0,6	1,6
Consumer non-durables	105,4	-0,1	0,8	0,4

(1) n.e.c. : not elsewhere classifiable

(2) Main industrial groupings : definition in Commission regulation EC of 14 June 2007

Sources : Insee, SSP, SOeS

In February 2011, output increased in the « other manufacturing » (+0.7%)...

Output strongly increased in the “other manufacturing, repair and installation of machinery” (+3.0%), the manufacture of rubber or plastics products, and other non-metallic mineral products (+1,4%), the manufacture of chemicals and chemical products (+0.9%) and the manufacture of basic pharmaceutical products and pharmaceutical preparations (+0.3%).

In the other hand, the output decreased in the manufacture of wood and paper products; printing and re-output of recorded media (-1.8%), the manufacture of basic metals and fabricated metal products (-0.7%), and the manufacture of textile (-0.2%).

...and in the manufacture of transport equipment (+2.3%)

Output increased in the manufacture of other transport equipment (+3.8%) and the manufacture of motor vehicles, trailers and semi-trailers (+1.0%).

On the opposite, the output decreased in the manufacture of electrical or electronic equipment and machine equipment (-0.3%)

Output decreased in the manufacture of computer, electronic and optical products (-2.9%). On the contrary, it increased in the manufacture of electrical equipment (+1.3%) and the manufacture of machinery and equipment n.e.c. (+0.6%).

• Revisions : -0.33 point in January

In January 2011, manufacturing output increased by 1.5%

The new calculation of the SA-WDA especially applies to the “other manufacturing, repair and installation of machinery”.

Measure of variations' revisions

(in point %)

	Jan. / Dec.	Dec. / Nov.	Nov. / Oct.	Q4 2010 / Q3 2010	2010 / 2009
Industry (BE)	-0,21	0,11	0,11	0,11	-0,09
raw serie	-0,01	-0,10	0,00	-0,02	-0,05
SA-WDA coefficient	-0,20	0,21	0,11	0,13	-0,04
Manufacturing (CZ)	-0,33	0,22	0,00	0,15	-0,10
raw serie	-0,01	-0,21	0,00	-0,15	-0,06
SA-WDA coefficient	-0,32	0,43	0,00	0,30	-0,04

Note of reading : in the manufacturing, the SA-WDA evolution between December and January is revised by -0.33 point : -0.01 is due to the raw serie's revision and -0.32 to the new calculation of the SA-WDA.

Sources : Insee, SSP, SOeS

Learn more :

- Complementary data (long series) and metadata (methodology, linked internet pages...) are available on the HTML page of this index : <http://www.insee.fr/en/themes/info-rapide.asp?id=10>
- Historical data are available on the BDM : [G950](#), [G951](#), [G952](#), [G953](#), [G963](#).
- Press contact : bureau-de-presse@insee.fr

Next issue: May 10 2011, 8:45 AM