

# Informations *Rapides*



4 avril 2011 - n° 86 **CONJONCTURE**

## ■ Turnover in the wholesale trade and business services - January 2011

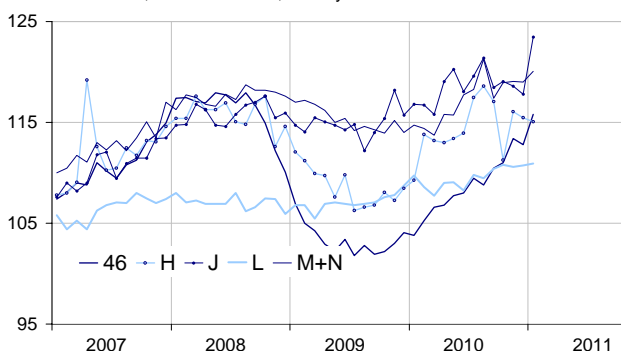
### In January 2011, the turnover increased in information and communication and in the wholesale trade

Every index in this issue is in value, seasonally and working-day adjusted.

In January 2011, the turnover rose in *information and communication* (+4.8%), in the “*wholesale trade...*” (+2.7%) and in *business support activities* (+0.9%). It slightly grew in *real estate activities* (+0.2%). It declined in *transportation and storage* (−0.3%).

#### Wholesale trade and business service

Turnover indices, value SA-WDA, Base year 2005



Source : INSEE

Quarter on quarter (q-o-q), the turnover increased : by 3.5% in the “*wholesale trade...*”, by 0.5% in *real estate activities*, by 0.3% in *information and communication* and by 0.2% in *business support activities*. It was broadly stable in *transportation and storage* (−0.1%).

Year on year (y-o-y), the turnover soared by 10.0% in the “*wholesale trade...*” and by 6.6 % in *transportation and storage*. It also gained in *business support activities* (+4.2%), in *information and communication* (+2.6%) and in *real estate activities* (+1.8%).

From now on, turnover indices are seasonally and working-day adjusted with X12-ARIMA and no longer with TRAMO-SEATS. Due to this change and to the update of all the SA-WDA models, revisions are higher than usual.

The SA-WDA evolution in December has been revised by −1.2 point in *information and communication*, +0.6 point in *business support activities*, −0.3 point in the “*wholesale trade...*” and −0.2 point in *transportation and storage*. In the same period, the turnover's variation has been confirmed in *real estate activities*.

#### Monthly turnover indices

SA-WDA value, Base year 2005

Classification NAF rev. 2	Weight	Change in %			
		Jan./ Dec.	Dec./ Nov.	q-o-q (1)	y-o-y (2)
<b>46 Wholesale trade, except of motor vehicles and motorcycles</b>	<b>1000</b>	<b>2,7</b>	<b>−0,5</b>	<b>3,5</b>	<b>10,0</b>
Wholesale on a fee or contract basis	166	−0,1	−1,2	2,4	6,1
Wholesale of agricultural raw materials and live animals	62	5,2	−0,1	9,5	29,8
Wholesale of food, beverages and tobacco	183	1,9	−1,3	2,2	6,6
Wholesale of household goods	173	0,0	−1,6	0,8	5,1
Wholesale of professional equipment goods	215	4,8	2,4	4,5	11,2
Other specialised wholesale	193	4,8	−1,3	5,1	13,6
<b>H Transportation and storage</b>	<b>1000</b>	<b>−0,3</b>	<b>−0,5</b>	<b>−0,1</b>	<b>6,6</b>
<b>J Information and communication</b>	<b>1000</b>	<b>4,8</b>	<b>−0,7</b>	<b>0,3</b>	<b>2,6</b>
<b>L Real estate activities</b>	<b>1000</b>	<b>0,2</b>	<b>0,1</b>	<b>0,5</b>	<b>1,8</b>
<b>M+N Business support activities</b>	<b>1000</b>	<b>0,9</b>	<b>−0,1</b>	<b>0,2</b>	<b>4,2</b>
M Professional, scientific and technical activities	626	−0,4	0,5	−0,5	2,5
N Administrative and support service activities	374	3,4	−1,1	1,4	7,2

(1) Quarter-on-quarter: last three months / three previous months.

(2) Year-on-year: last three months / three same months of the previous year.

The codes correspond to different levels of aggregation of the classification NAF rev. 2.

Source : INSEE