

# Informations Rapides



2 février 2011 - n° 34 CONJONCTURE

## ■ Turnover in the retail trade and personal services - November 2010

### In November 2010, the turnover rose in the trade and repair of motor vehicles and motorcycles and in the retail trade

Every index in this issue is in volume, seasonally and working-day adjusted.

In November 2010, the turnover grew noticeably in the *trade and repair of motor vehicles and motorcycles* (+2.1 %), in the *retail trade, except of motor vehicles and to a lesser extent; motorcycles* (+0.9 %) and in *accommodation and food service activities* (+0.4 %). It was broadly stable in *household services* (0.0 %).

In the last three months, the turnover increased in the "retail trade..." (+1.2 %, q-o-q) and in the *trade and repair of motor vehicles and motorcycles* (+0.4 %). It was broadly steady and in *household services* (-0.1 %). It declined in *accommodation and food service activities* (-0.4 %).

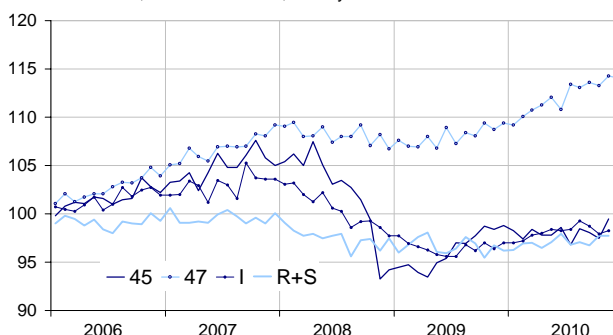
The turnover exceeded its last year's level in the "retail trade..." (+4.6 %, y-o-y), in *accommodation and food services activities* (+1.8 %) and, to a lesser extent, in *households services* (+1.0 %). It was unchanged in the *trade and repair of motor vehicles* (+0.1 %).

According to our estimate, the turnover in the "retail trade..." is expected to slightly dip in December 2010 (-0.3 %).

The SA-WDA evolution in October has been revised by +0.1 point in the "retail trade..." and by -0.1 point in *household services*. In the same period, the turnover's variation has been confirmed in the *trade and repair of motor vehicles* and in *accommodation and food service activities*.

#### Retail trade and personal services

Turnover indices, volume SA-WDA, Base year 2005



Source : INSEE

Please note that the « retail trade... » chart (47) includes the early estimate for November 2010.

#### Monthly turnover indices

SA-WDA volume, Base year 2005

Classification NAF rev. 2	Weight	Change in %			
		Nov./ Oct.	Oct./ Sept.	q-o-q (1)	y-o-y (2)
<b>45 Trade and repair of motor vehicles and motorcycles</b>	<b>1000</b>	<b>2.1</b>	<b>-0.6</b>	<b>0.4</b>	<b>0.1</b>
<b>47 Retail trade, except of motor vehicles and motorcycles</b>	<b>1000</b>	<b>0.9</b>	<b>-0.3</b>	<b>1.2</b>	<b>4.6</b>
471 Retail sale in non-specialised stores	415	1.1	-0.4	0.7	3.0
472 to 477 Retail sale in specialised stores	545	0.8	-0.3	1.5	5.8
478 and 479 Retail trade not in stores	40	1.7	-1.1	0.0	1.8
<b>I Accommodation and food service activities</b>	<b>1000</b>	<b>0.4</b>	<b>-0.8</b>	<b>-0.4</b>	<b>1.8</b>
<b>R+S Households services</b>	<b>1000</b>	<b>0.0</b>	<b>1.0</b>	<b>0.1</b>	<b>1.0</b>
R Arts, entertainment and recreation	472	-0.4	1.8	-0.2	1.7
S Other service activities	528	0.3	0.3	0.5	0.6

(1) Quarter-on-quarter: last three months / three previous months.

(2) Year-on-year: last three months / three same months of the previous year.

The codes correspond to different levels of aggregation of the classification NAF rev.2.

Source: INSEE

#### Turnover indices: early estimate\*

SA-WDA volume, Base year 2005

	Change in %	
	Dec. 2010/ Nov. 2010	Dec. 2010/ Dec. 2009
<b>47 Retail trade...</b>	<b>-0.3</b>	<b>4.2</b>

\* Econometric estimate from a set of sources available within 30 days after the end of the reference month

Source: INSEE