

Informations Rapides

10 novembre 2010 - n° 275 **CONJONCTURE**



■ Industrial Production Indices – September 2010

In September, the manufacturing production is almost stable

In September 2010, the **manufacturing production** was almost stable in volume. It was also stable in august (-0,1%). In the **industry**, the production was also stable.

During the third quarter (quarter-on-quarter change), the production increased in the manufacturing sector (+0.7%) and in the industry as a whole (+0.4%).

In the third quarter, the manufacturing production increased (+0.7%)...

During the quarter, the production increased in the "other manufacturing" (+0.9%, q-o-q), in the *electrical, electronic equipment and machine equipment* (+1.4%), as well as in the *manufacture of coke and refined petroleum products* (+1.9%). It was stable in the *manufacture of transport equipment* (+0.1%) and slightly decreased in the *manufacture of food products and beverages* (-0.3%).

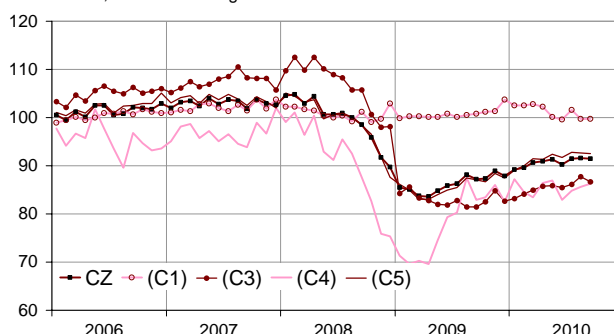
...and exceeded it's last year's level by 5.0%

The manufacturing production rose by 5.0% (y-o-y). It soared in the "other manufacturing" (+7.0%), in the *electrical and electronic equipment and machine equipment* (+6.0%) and in the *manufacture of transport equipment* (+2.4%).

Please note: all the data are adjusted for seasonal variations (SA) and the number of working days (WDA).

Industrial Production indexes

2005 based, SA-WDA changes in %



Legend : CZ : MANUFACTURING - (C1) : Manufacture of food products and beverages - (C3) : Electrical and electronic equipment; machine equipment - (C4) : Manufacture of transport equipment - (C5) : Other manufacturing
Sources : INSEE, SSP, SOeS

Industrial Production Indexes by activity (NA)

2005 based, SA-WDA changes in %

NA : A10, (A17)	Sept. / Aug.	Aug. / July	Quarter on quarter change	Year on year change (1)
BE: INDUSTRY	0,1	0,0	0,4	5,1
CZ: MANUFACTURING	-0,1	0,1	0,7	5,0
(C1): Manufacture of food products and beverages	-0,1	-1,8	-0,3	-0,1
(C2): Manufacture of coke and refined petroleum products	5,2	0,4	1,9	0,5
(C3): Electrical and electronic equipment; machine equipment	-1,1	1,9	1,4	6,0
(C4): Manufacture of transport equipment	0,7	0,9	0,1	2,4
(C5): Other manufacturing	-0,1	-0,1	0,9	7,0
DE: Mining and quarrying; energy; water supply; waste management	1,1	-0,7	-2,1	5,5
FZ: Construction	-0,3	0,9	-0,1	-2,1

(1) Last three months / three same months of previous year
The codes correspond to the level of aggregation A 10 (A 17) of the "NA" aggregate classification based on NAF rev.2.

Sources : INSEE, SSP, SOeS

Industrial Production Indexes

2005 based, SA-WDA changes in %

NA : A10, (A17), [A38 ou A64]	Sept. 2010	Sept. / Aug.	Aug. / July	Quarter on quarter change
BE: INDUSTRY	92,5	0,1	0,0	0,4
CZ: MANUFACTURING	91,5	-0,1	0,1	0,7
(C1): Man. of food products and beverages	99,7	-0,1	-1,8	-0,3
(C2): Man. of coke and refined petroleum products	86,4	5,2	0,4	1,9
(C3): Electrical and electronic equipment; machine equipment	86,7	-1,1	1,9	1,4
[CI] Man. of computer, electronic and optical products	86,7	-2,5	2,9	-0,1
[CJ] Man. of electrical equipment	97,0	-1,6	1,5	1,2
[CK] Man. of machinery and equipment n.e.c. (1)	80,7	0,1	1,3	2,7
(C4): Man. of transport equipment	86,2	0,7	0,9	0,1
[CL1] Man. of motor vehicles, trailers and semi-trailers	68,6	-0,6	2,2	3,5
[CL2] Man. of other transport equipment	122,2	2,4	-0,7	-3,7
(C5): Other manufacturing	92,6	-0,1	-0,1	0,9
[CB] Man. of textiles, wearing apparel, leather and related products	62,8	4,8	-5,8	1,6
[CC] Man. of wood and paper products; printing and reproduction of recorded media	83,2	0,1	1,2	-0,1
[CE] Man. of chemicals and chemical products	108,2	0,6	-2,2	-0,7
[CF] Man. of basic pharmaceutical products and pharmaceutical preparations	134,5	-1,5	-0,7	1,2
[CG] Man. of rubber and plastics products, and other non-metallic mineral products	84,3	-0,5	1,7	1,3
[CH] Man. of basic metals and fabricated metal products, except machinery and equipment	81,3	0,0	0,5	0,7
[CM] Other manufacturing; repair and installation of machinery and equipment	104,5	-0,4	0,1	2,4
DE: Mining and quarrying; energy; water supply; waste management	98,8	1,1	-0,7	-2,1
[BZ] Mining and quarrying	90,5	0,2	-0,9	1,9
[DZ] Electricity, gas, steam and air-conditioning supply	99,3	0,2	0,4	-2,3
[EZ] Water supply; sewerage, waste management and remediation	101,4	12,2	-10,8	-2,8
FZ: Construction	94,2	-0,3	0,9	-0,1
MIGs (2)				
Capital goods	86,4	0,0	1,1	1,6
Intermediate goods	84,9	0,2	-0,4	-0,1
Consumer durables	78,4	-10,3	12,2	4,3
Consumer non-durables	105,4	-0,1	-1,5	0,3

(1) n.e.c. : not elsewhere classifiable

(2) Main industrial groupings : definition in Commission regulation EC of 14 June 2007

Sources : Insee, SSP, SOeS

In September, the production decreased in the electrical or electronic equipment and the machine equipment (-1.1%)

The production decreased in the manufacture of *computer, electronic and optical products* (-2.5%) and in the manufacture of *electrical equipment* (-1.6%). It was stable in the manufacture of *machinery and equipment n.e.c.* (+0.1%).

It was stable in the « other manufacturing » (-0.1%)...

The production decreased in the *basic pharmaceutical products and pharmaceutical preparations* (-1.5%), in the manufacture of *rubber and plastics products, and other non-metallic mineral products* (-0.5%) and in the *other manufacturing; repair and installation* (-0.4%). It was stable in the manufacture of *basic metals and fabricated metal products* and in the manufacturing of *wood and paper products, printing and reproduction of recorded media* (+0.1%). The production increased in the manufacture of *textiles, wearing apparel, leather and related products* (+4.8%) and to a lesser extent in the manufacture of *chemicals and chemical products* (+0.6%).

The production increased in the manufacture of transport equipment (+0.7%)

The production rose in the manufacture of *other transport equipment* (+2.4%). In the opposite, it decreased in the manufacture of *motor vehicles, trailers and semi-trailers* (-0.6%).

• Revisions : +0.1 point in August

The SA-WDA evolution between July and August of the manufacturing production published during the previous campaign was stable. It has been revised at +0.1%.

The raw data revisions are due to industries' belated answers, especially in the manufacture of *machinery and equipment n.e.c.*, the manufacture of *computer, electronic and optical products* and in the *other manufacturing*.

Measure of variations' revisions

(in point %)

	Aug. / July	July / June	June / May	Q2 2010 / Q1 2010	2009 / 2008
Industry (BE)	0,00	0,11	0,00	-0,04	-0,23
raw serie	0,08	0,12	0,23	0,00	-0,20
SA-WDA coefficient	-0,08	-0,01	-0,23	-0,04	-0,03
Manufacturing (CZ)	0,11	0,11	0,11	-0,19	-0,23
raw serie	0,08	0,11	0,23	-0,04	-0,23
SA-WDA coefficient	0,03	0,00	-0,12	-0,15	0,00

Note of reading : in the manufacturing, the SA-WDA evolution between August and July is revised by 0.11 point : 0.08 is due to the raw serie's revision and 0.03 to the new calculation of the SA-WDA.

Sources : Insee, SSP, SOeS

Learn more :

- Complementary data (long series) and metadata (methodology, linked internet pages...) are available on the HTML page of this index : <http://www.insee.fr/fr/themes/info-rapide.asp?id=10>
- Press contact : bureau-de-presse@insee.fr

Next issue: December 10 2010, 8:45 AM