

Informations Rapides



10 janvier 2011 - n°9 **CONJONCTURE**

■ Industrial Production Indices – November 2010

In November, the manufacturing production increased by 2.2 %

In November 2010, the **manufacturing production** increased in volume by 2.2%. It had decreased in October (-0.9%). In the **industry**, the production increased too (+2.3%).

During the quarter (quarter-on-quarter change), the production increased in the manufacturing sector and also in the industry as a whole (+0.6%).

In the last three months, the manufacturing production increased (+0.6%)...

During the quarter, the production increased in the *manufacture of transport equipment* (+3.7%, q-o-q), in the *electrical, electronic equipment and machine equipment* (+1.7%) and in the *“other manufacturing”* (+0.3%). In the meantime, it remains stable in the *manufacture of food products and beverages* (-0.1%) and strongly decreased in the *manufacture of coke and refined petroleum products* (-17.7%).

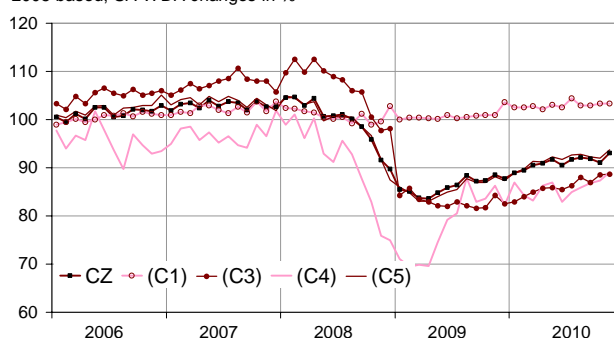
...and exceeded it's last year's level by 4.9%

The manufacturing production rose by 4.9% (y-o-y). It soared in the *“other manufacturing”* (+6.1%), in the *electrical and electronic equipment and machine equipment* (+6.7%) and in the *manufacture of transport equipment* (+4.1%).

Please note: all the data are adjusted for seasonal variations (SA) and the number of working days (WDA).

Industrial Production indexes

2005 based, SA-WDA changes in %



Legend : CZ : MANUFACTURING - (C1) : Manufacture of food products and beverages - (C3) : Electrical and electronic equipment; machine equipment - (C4) : Manufacture of transport equipment - (C5) : Other manufacturing
Sources : INSEE, SSP, SOeS

Industrial Production Indexes by activity (NA)

2005 based, SA-WDA changes in %

	Nov. / Oct.	Oct. / Sept.	Quarter on quarter change	Year on year change (1)
NA : A10, (A17)				
BE: INDUSTRY	2,3	-0,8	0,6	5,3
CZ: MANUFACTURING	2,2	-0,9	0,6	4,9
(C1): Manufacture of food products and beverages	0,0	0,4	-0,1	2,2
(C2): Manufacture of coke and refined petroleum products	108,3	-56,6	-17,7	-14,1
(C3): Electrical and electronic equipment; machine equipment	0,2	1,7	1,7	6,7
(C4): Manufacture of transport equipment	2,1	0,6	3,7	4,1
(C5): Other manufacturing	1,8	-0,2	0,3	6,1
(DE): Mining and quarrying; energy; water supply; waste management	2,5	-0,3	0,6	7,8
FZ: Construction	-1,3	-0,7	-1,3	-3,0

(1) Last three months / three same months of previous year
The codes correspond to the level of aggregation A 10 (A 17) of the "NA" aggregate classification based on NAF rev.2.
Sources : INSEE, SSP, SOeS

Industrial Production Indexes

2005 based, SA-WDA changes in %

NA : A10, (A17), [A38 ou A64]	Nov. 2010	Nov. / Oct.	Oct. / Sept.	Quarter on quarter change
BE: INDUSTRY	94,2	2,3	-0,8	0,6
CZ: MANUFACTURING	93,1	2,2	-0,9	0,6
(C1): Man. of food products and beverages	103,3	0,0	0,4	-0,1
(C2): Man. of coke and refined petroleum products	77,5	108,3	-56,6	-17,7
(C3): Electrical and electronic equipment; machine equipment	88,7	0,2	1,7	1,7
[CI] Man. of computer, electronic and optical products	89,6	-0,6	4,6	1,5
[CJ] Man. of electrical equipment	101,9	1,8	0,6	2,5
[CK] Man. of machinery and equipment n.e.c. (1)	80,4	-0,4	0,4	1,4
(C4): Man. of transport equipment	89,1	2,1	0,6	3,7
[CL1] Man. of motor vehicles, trailers and semi-trailers	76,6	6,1	3,6	7,9
[CL2] Man. of other transport equipment	114,6	-3,0	-2,9	-1,1
(C5): Other manufacturing	93,7	1,8	-0,2	0,3
[CB] Man. of textiles, wearing apparel, leather and related products	60,6	1,0	-2,9	-0,6
[CC] Man. of wood and paper products; printing and reproduction of recorded media	82,9	0,6	-0,6	0,3
[CE] Man. of chemicals and chemical products	109,4	4,2	-3,2	-1,6
[CF] Man. of basic pharmaceutical products and pharmaceutical preparations	130,8	-0,6	0,2	-2,4
[CG] Man. of rubber and plastics products, and other non-metallic mineral products	86,2	0,8	0,9	1,9
[CH] Man. of basic metals and fabricated metal products, except machinery and equipment	83,0	2,9	0,1	0,8
[CM] Other manufacturing; repair and installation of machinery and equipment	108,5	2,8	0,4	1,5
(DE): Mining and quarrying; energy; water supply; waste management	101,4	2,5	-0,3	0,6
[BZ] Mining and quarrying	88,6	1,3	-3,0	-1,5
[DZ] Electricity, gas, steam and air-conditioning supply	102,8	3,0	0,0	0,5
[EZ] Water supply; sewerage, waste management and remediation	99,1	-0,4	-1,3	3,3
FZ: Construction	91,9	-1,3	-0,7	-1,3
MIGs (2)				
Capital goods	86,4	1,8	0,6	2,3
Intermediate goods	84,9	2,0	-0,2	0,9
Consumer durables	78,4	-2,6	2,2	-0,3
Consumer non-durables	105,4	0,1	0,5	-0,6

(1) n.e.c. : not elsewhere classifiable

(2) Main industrial groupings : definition in Commission regulation EC of 14 June 2007

Sources : Insee, SSP, SOeS

The production increased in the « other manufacturing » (+1.8%)

The production increased in the manufacture of basic metals and fabricated metal products (+2.9%), in the manufacture of chemicals and chemical products (4.2%), and in the other manufacturing (+2.8%). On the contrary, it decreased in the manufacture of basic pharmaceutical products and pharmaceutical preparations (-0.6%).

In November, the production recovered in the cock and refined petroleum products (+108,3 %)

In November, the production recovered in the cock and refined petroleum products (+108.3%) after the stop in October. The production of September is almost caught up.

The production also increase in the manufacture of transport equipment (+2.1%)...

The production rose in the manufacture of other transport equipment (+6.1%) but decreased in the manufacture of motor vehicles, trailers and semi-trailers (-3.0%).

... and more weakly in the manufacture of electrical or electronic equipment and the machine equipment (+0.2%)

The production increased in the manufacture of electrical equipment (+1.8%). It decreased in the manufacture of machinery and equipment n.e.c. (-0.4%) and in the manufacture of computer, electronic and optical products (-0.6%).

• Revisions : -0.1 point in October

In October, the manufacturing production had decreased (-0.9%)

The SA-WDA evolution between September and October of the manufacturing production published the previous campaign was -0.8% and has been revised at -0.9%.

Measure of variations' revisions

	Oct. / Sept.	Sept. / Aug.	Aug. / July	Q3 2010 / Q2 2010	2009 / 2008
Industry (BE)	0,00	-0,11	0,00	-0,11	-0,01
raw serie	-0,10	-0,08	-0,11	-0,01	0,00
SA-WDA coefficient	0,10	-0,03	0,11	-0,10	-0,01
Manufacturing (CZ)	-0,11	-0,11	0,00	-0,04	-0,02
raw serie	-0,20	0,07	-0,11	-0,04	0,00
SA-WDA coefficient	0,09	-0,18	0,11	0,00	-0,02

Note of reading : in the manufacturing, the SA-WDA evolution between October and September is revised by -0.11 point : -0.20 point is due to the raw serie's revision and 0.09 point to the new calculation of the SA-WDA.

Sources : Insee, SSP, SOeS

Learn more :

- Complementary data (long series) and metadata (methodology, linked internet pages...) are available on the HTML page of this index : <http://www.insee.fr/en/themes/info-rapide.asp?id=10>
- Historical data are available on the BDM : [G950](#), [G951](#), [G952](#), [G953](#), [G963](#).
- Press contact : bureau-de-presse@insee.fr

Next issue: February 10 2011, 8:45 AM