

# Informations *Rapides*



2 février 2011 - n° 33 CONJONCTURE

## ■ Turnover in the wholesale trade and business services - November 2010

### In November 2010, the turnover rose in transportation and storage and in the wholesale trade

Every index in this issue is in value, seasonally and working-day adjusted.

In November 2010, the turnover surged in the sector of *transportation and storage* (+2.7 %), after a fall of 2.7 % in October 2010. It also grew in the *wholesale trade, except of motor vehicles and motorcycles* (+1.3 %) and, to a lesser extent, in *real state activities* (+0.3 %). On the contrary, it slightly dipped in the sector of *information and communication* (-0.3 %) and in *business support activities* (-0.3 %).

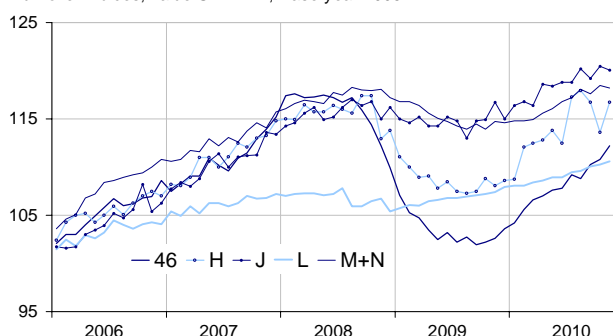
In the last three months, the turnover grew compared to three previous months : +2.3 % in the "*wholesale trade...*", +0.9 % in *real estate activities*, +0.6 % in the sector of *information and communication* and +0.6 % in *business support activities*. Conversely, it slightly slipped in *transportation and storage* (-0.2 %).

Compared to the three same months of the previous year, the turnover picked up in the "*wholesale trade...*" (+8.7 %) and in *transportation and storage* (+7.0 %). It also grew in the sector of *information and communication* (+3.9 %), in *business support activities* (+3.3 %) and in *real estate activities* (+2.9 %).

The SA-WDA evolution in October has been revised by -1.0 point in *transportation and storage*. The increase, initially announced at -1.7 %, is corrected at -2.7 %. This revision is due to the re-estimation of the SA-WDA coefficients. In the same period, the evolution has been revised by +0.1 point in the sectors of the "*wholesale trade...*" and *business support activities*. The turnover's variation has been confirmed in the sector of *information and communication* and in *real state activities*.

#### Wholesale trade and business service

Turnover indices, value SA-WDA, Base year 2005



Source : INSEE

## Monthly turnover indices

SA-WDA value, Base year 2005

Classification NAF rev. 2	Weight	Change in %			
		Nov./ Oct.	Oct./ Sept.	q-o-q (1)	y-o-y (2)
<b>46 Wholesale trade, except of motor vehicles and motorcycles</b>	<b>1000</b>	<b>1.3</b>	<b>0.5</b>	<b>2.3</b>	<b>8.7</b>
<i>Wholesale on a fee or contract basis</i>	166	0.5	2.4	2.5	5.6
<i>Wholesale of agricultural raw materials and live animals</i>	62	3.0	-0.2	7.1	19.5
<i>Wholesale of food, beverages and tobacco</i>	183	1.1	0.8	1.9	7.0
<i>Wholesale of household goods</i>	173	0.3	0.4	0.9	4.7
<i>Wholesale of professional equipment goods</i>	215	-0.4	0.3	1.3	8.1
<i>Other specialised wholesale</i>	193	4.0	-1.3	3.2	13.9
<b>H Transportation and storage</b>	<b>1000</b>	<b>2.7</b>	<b>-2.7</b>	<b>-0.2</b>	<b>7.0</b>
<b>J Information and communication</b>	<b>1000</b>	<b>-0.3</b>	<b>1.1</b>	<b>0.6</b>	<b>3.9</b>
<b>L Real estate activities</b>	<b>1000</b>	<b>0.3</b>	<b>0.2</b>	<b>0.9</b>	<b>2.9</b>
<b>M+N Business support activities</b>	<b>1000</b>	<b>-0.3</b>	<b>0.8</b>	<b>0.6</b>	<b>3.3</b>
<i>M Professional, scientific and technical activities</i>	626	-0.2	0.8	0.2	1.6
<i>N Administrative and support service activities</i>	374	-0.2	0.6	1.4	6.3

(1) Quarter-on-quarter: last three months / three previous months.

(2) Year-on-year: last three months / three same months of the previous year.

The codes correspond to different levels of aggregation of the classification NAF rev. 2.

Source: INSEE