

# Informations Rapides

10 octobre 2015 - n° 247

Principaux indicateurs



## Industrial Production Indices – August 2015

### In August 2015, manufacturing output increased significantly (+2.2%)

**Warnings:** Please note: all the series are seasonally (SA) and working-day adjusted (WDA).

The commentary shows variations of subsections by decreasing contribution. The contribution of a subsection depends on the extent of the change and on its weight.

The models used to calculate the SA and WDA series have been updated for this publication.

In August 2015, output bounced back significantly in the **manufacturing industry** (+2.2% after -1.3% in July) and in the **industry** as a whole (+1.6% after -1.1% in July).

#### Manufacturing output diminished over the last three months (-0.4%)

Over the last three months, output diminished in the manufacturing sector (-0.4% q-o-q) whereas it was stable in the overall industry. Output decreased in *other manufacturing* (-0.5%), and plummeted in the *manufacture of coke and refined petroleum products* (-14.9%). Conversely, output increased in the *mining, quarrying, energy and water supply* (+1.8%), in the *manufacture of food products and beverages* (+0.7%), and more slightly in the *manufacture of electrical and electronic equipment; machine equipment* (+0.3%). It remained stable in the *manufacture of transport equipment*.

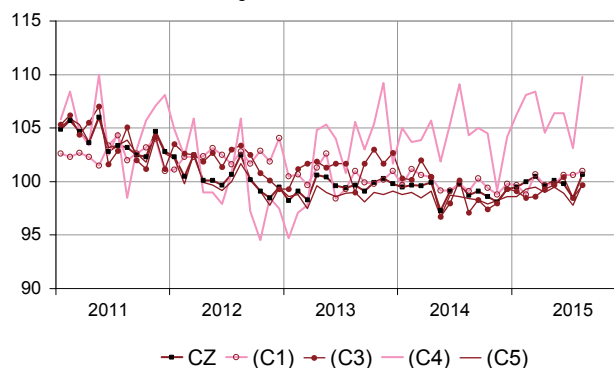
#### Over the year, manufacturing output increased (+0.5%)

Manufacturing output increased over the year (+0.5% y-o-y); so did overall industrial output (+0.6% y-o-y).

Over the year, output increased in most sectors: in *mining, quarrying, energy and water supply* (+1.5%), in the *manufacture of electrical and electronic equipment* (+1.2%), in the *manufacture of food products and beverages* (+1.4%); it rose more moderately in *other manufacturing* (+0.3%), and in the *manufacture of transport equipment* (+0.2%). On the contrary, it went down in the *manufacture of coke and refined petroleum products* (-4.7%).

#### Monthly Industrial Production Indices

2010 based, SA-WDA changes in %



Legend: CZ: Manufacturing - (C1): Manufacture of food products and beverages - (C3): Electrical and electronic equipment; machine equipment - (C4): Manufacture of transport equipment - (C5): Other manufacturing  
Sources: Insee, SSP, SOeS

#### Variation of the Industrial Production

2010 based, SA-WDA changes in %

	Aug. / July	July / June	Q-o-Q change (1)	Year on year change (2)
<b>NA : A10, (A17)</b>				
<b>BE: INDUSTRY</b>	<b>1.6</b>	<b>-1.1</b>	<b>0.0</b>	<b>0.6</b>
<b>CZ: Manufacturing</b>	<b>2.2</b>	<b>-1.3</b>	<b>-0.4</b>	<b>0.5</b>
(C1): Manufacture of food products and beverages	0.4	0.0	0.7	1.4
(C2): Manufacture of coke and refined petroleum products	-0.5	1.0	-14.9	-4.7
(C3): Electrical and electronic equipment; machine equipment	1.2	-1.9	0.3	1.2
(C4): Manufacture of transport equipment	6.5	-3.1	0.0	0.2
(C5): Other manufacturing	2.0	-1.1	-0.5	0.3
(DE): Mining and quarrying; energy; water supply; waste management	-1.0	0.5	1.8	1.5
<b>FZ: CONSTRUCTION</b>	<b>0.6</b>	<b>0.3</b>	<b>-1.1</b>	<b>-5.6</b>

(1) Last three months / previous three months  
(2) Last three months / same three months of previous year  
The codes correspond to the level of aggregation A 10 (A 17) of the "NA" aggregate classification based on NAF rev.2.  
Sources: INSEE, SSP, SOeS

## Variation of the Industrial Production

2010 based, SA-WDA changes in %

NA : A10, (A17), [A38 ou A64]	Aug. 2015	Aug. / July	July / June	Quarter on quarter change
<b>BE: INDUSTRY</b>	<b>99.9</b>	<b>1.6</b>	<b>-1.1</b>	<b>0.0</b>
<b>CZ: Manufacturing</b>	<b>100.7</b>	<b>2.2</b>	<b>-1.3</b>	<b>-0.4</b>
(C1): Man. of food products and beverages	101.0	0.4	0.0	0.7
(C2): Man. of coke and refined petroleum products	78.0	-0.5	1.0	-14.9
(C3): Electrical and electronic equipment; machine equipment	99.7	1.2	-1.9	0.3
[CI] Man. of computer, electronic and optical products	105.2	1.0	-3.2	-0.4
[CJ] Man. of electrical equipment	90.5	2.8	-2.4	-0.4
[CK] Man. of machinery and equipment n.e.c. (1)	102.2	0.7	-0.9	1.2
(C4): Man. of transport equipment	109.8	6.5	-3.1	0.0
[CL1] Man. of motor vehicles, trailers and semi-trailers	101.6	12.6	-5.2	0.7
[CL2] Man. of other transport equipment	119.0	1.3	-1.4	-0.7
(C5): Other manufacturing	99.8	2.0	-1.1	-0.5
[CB] Man. of textiles, wearing apparel, leather and related products	102.9	9.9	-1.2	1.1
[CC] Man. of wood and paper products; printing and reproduction of recorded media	89.8	2.3	0.5	0.4
[CE] Man. of chemicals and chemical products	116.2	4.9	0.8	3.3
[CF] Man. of basic pharmaceutical products and pharmaceutical preparations	110.6	0.2	-0.1	-0.5
[CG] Man. of rubber and plastics products, and other non-metallic mineral products	96.3	1.6	-1.3	-0.6
[CH] Man. of basic metals and fabricated metal products, except machinery and equipment	93.9	0.4	-1.9	-2.7
[CM] Other manufacturing; repair and installation of machinery and equipment	102.4	2.6	-2.5	-0.2
(DE): Mining and quarrying; energy; water supply; waste management	96.8	-1.0	0.5	1.8
[BZ] Mining and quarrying	93.5	-2.2	-2.0	0.5
[DZ] Electricity, gas, steam and air-conditioning supply	94.0	-1.2	0.7	1.5
[EZ] Water supply; sewerage, waste management and remediation	117.7	0.2	0.3	3.7
<b>FZ: CONSTRUCTION</b>	<b>86.7</b>	<b>0.6</b>	<b>0.3</b>	<b>-1.1</b>
<b>MIGs (2)</b>				
Capital goods	103.1	3.7	-2.6	-0.2
Intermediate goods	96.3	0.4	-0.9	-0.9
Consumer durables	99.9	1.6	-2.4	0.3
Consumer non-durables	106.5	3.2	-0.3	1.1
Energy	95.3	-0.9	0.6	0.7

(1) n.e.c. : not elsewhere classifiable

(2) Main industrial groupings: definition in Commission regulation EC of June 14th 2007

Sources: Insee, SSP, SOeS

## In August 2015, output recovered significantly in other manufacturing (+2.0% after -1.1%)

Output surged in the *manufacture of chemicals and chemical products* (+4.9%) in particular, and bounced back in *other manufacturing; repair and installation of machinery and equipment* (+2.6%), in the *manufacture of textiles, wearing apparel, leather and related products* (+9.9%) as well as in the *manufacture of rubber and plastics products, and other non-metallic mineral products* (+1.6%).

## Output went up sharply in the manufacture of transport equipment (+6.5% after -3.1%)

In particular, output straightened back sharply in the *manufacture of motor vehicles, trailers and semi-trailers* (+12.6% after -5.2% in July) where some businesses brought forward their holiday schedule, and more moderately in the *manufacture of other transport equipment* (+1.3% after -1.4%).

## Output also increased in the electrical and electronic equipment; machine equipment (+1.2%)

Output recovered in the *manufacture of electrical equipment* (+2.8% after -2.4 in July), in the *manufacture of machinery and equipment n.e.c.* (+0.7% after -0.9%) and in the *manufacture of computer, electronic and optical products* (+1.0% after -3.2%).

## Output rose slightly in the manufacture of food products and beverages (+0.4%)

Output increased in the *manufacture of food products and beverages* (+0.4%), in particular in the *manufacture of bakery and farinaceous products* and in the *manufacture of other food products*.

## Conversely, output declined in mining and quarrying; energy; water supply; waste management (-1.0%)

Output declined in *electricity, gas, steam and air-conditioning supply* (-1.2% after +0.7% in July).

## Output also dipped in the manufacture of coke and refined petroleum products (-0.5%)

Output went down in the *manufacture of coke and refined petroleum products* (-0.5%) due to an unplanned maintenance in a refinery.

### Revisions in July 2015

#### Measure of variations' revisions


(in point %)

	July / June	June / May	May / April	Q2 2015 / Q1 2015	2014 / 2013
<b>Industry (BE)</b>	<b>-0.30</b>	<b>0.40</b>	<b>0.00</b>	<b>0.30</b>	<b>-0.20</b>
raw serie	-0.10	0.02	0.08	-0.01	-0.18
SA-WDA coefficient	-0.20	0.38	-0.08	0.31	-0.02
<b>Manufacturing (CZ)</b>	<b>-0.39</b>	<b>0.30</b>	<b>0.00</b>	<b>0.40</b>	<b>-0.24</b>
raw serie	-0.19	0.16	-0.02	0.07	-0.22
SA-WDA coefficient	-0.20	0.14	0.02	0.33	-0.02

Note of reading: in the manufacturing sector, the SA-WDA evolution between June 2015 and July 2015 is revised by -0.39 point; -0.19 is due to the raw data revision and -0.20 to the new SA-WDA coefficients and models.

Sources: Insee, SSP, SOeS

### Learn more:

- Complementary data (long series) and metadata (methodology, linked internet pages, etc.) are available on the web page of this index: <http://www.insee.fr/en/themes/info-rapide.asp?id=10>
- Historical data are available on the BDM: [G1397](#), [G1398](#), [G1400](#), [G1401](#), [G1411](#).
- Press contact: [bureau-de-presse@insee.fr](mailto:bureau-de-presse@insee.fr)
-  Follow us on [Twitter @InseeFr\\_News](https://twitter.com/InseeFr_News): [https://twitter.com/InseeFr\\_News](https://twitter.com/InseeFr_News)