

APPENDICES

- 1. Review of items according to the successive base indices
- 2. Weighting coefficients in base year 2000.
- 3. Monthly weighting coefficients for calculating prices and annual indices
- 4. Base year 2000 : retropolated indices
- 5. News bulletin on Agricultural Prices produced by the INSEE every month
- 6. Sources of information
- 7. Bibliography

IPPAP - Review of items

Belonging to the distribution nomenclature in base year 2000 (column D)

	D	1955	1970	1975	1980	1990	1995	2000
General index	x		0	0	0	0	0	0
General index except fruit and vegetables	x	0	0	0	0	0	0	0
Plant products	x	0	0	0	0	0	0	0
Cereals	x		0	0	0	0	0	0
Barley	x			0	0	0	0	0
Milling barley	x		0	0	0	0	0	0
Brewing barley	x			0	0	0	0	0
Soft wheat	x	0	0	0	0	0	0	0
Hard wheat	x			0	0	0	0	0
Oats	x				0	0	0	0
Sorghum	x				0	0	0	0
Rye	x				0	0	0	0
Triticale	x					0	0	0
Maize	x		0	0	0	0	0	0
Potatoes	x	0	0	0	0	0	0	0
Potatoes for storage	x					0	0	0
Potatoes for processing	x					0	0	0
Unprocessed potatoes for storage	x					0	0	0
Firm-fleshed varieties	x					0	0	0
Roseval						0	0	0
Charlotte						0	0	0
Nicola						0	0	0
Belle de Fontenay						0	0	0
Franceline								0
Chérie								0
Amandine								0
Normal-fleshed varieties	x					0	0	0
Bintjes					0	0	0	0
Agata								0
Mona-Lisa								0
Potatoes for potato flour	x				0	0	0	0
Early potatoes	x				0	0	0	0
Wine	x	0	0	0	0	0	0	0
Quality wine	x			0	0	0	0	0
Wine with Appellation d'origine contrôlée (AOC)	x				0	0	0	0
Bordeaux					0	0	0	0
White Bordeaux					0	0	0	0
Red Bordeaux					0	0	0	0
Burgundy					0	0	0	0
White Burgundy						0	0	0
Red Burgundy						0	0	0
Alsace					0	0	0	0
Côtes du Rhône						0	0	0
Pays Nantais						0	0	0
Anjou et Saumur						0	0	0
Gaillac						0	0	0
Dordogne wine						0	0	0
Provence wine						0	0	0
Fitou, Corbières, Minervois						0	0	0
Champagne	x				0	0	0	0
Natural sweet wine (VDN)	x				0	0	0	0
Specific wine of superior quality (VDQS)	x				0	0	0	0
Other wine	x					0	0	0
Ordinary wine (VCC)	x			0	0	0	0	0
Local wine	x				0	0	0	0
Table wine	x				0	0	0	0
Wine for Cognac	x					0	0	0
Oilseeds	x					0	0	0
Rape	x			0	0	0	0	0
Sunflower	x				0	0	0	0
Soya	x					0	0	0

Review of IPPAP items according to base years (continued)

	D	1955	1970	1975	1980	1990	1995	2000
Horticultural commodities	X		0	0	0	0	0	0
Cut flowers	X				0	0	0	0
Roses	X				0	0	0	0
Tulip	X				0	0	0	0
Gladioli	X				0	0	0	0
Chrysanthemums	X				0	0	0	0
Anemones	X				0	0	0	0
Asparagus	X				0	0	0	0
Dahlia	X					0	0	0
Gerbera	X					0	0	0
Iris	X					0	0	0
Lily	X					0	0	0
Antirrhinum	X					0	0	0
Lily of the valley	X					0	0	0
Carnation	X				0	0	0	0
Carnation uniflora	X					0	0	0
Carnation multiflora	X					0	0	0
Ranunculus	X					0	0	0
Christmas trees	X					0	0	0
Container-grown plants	X					0	0	0
Bedding plants	X					0	0	0
Nursery stock	X				0	0	0	0
Ornamental nursery stock						0	0	0
Hedge conifers						0	0	0
Other conifers						0	0	0
Broad-leaved hedges						0	0	0
Other broad-leaved trees						0	0	0
Other ornamental nursery stock						0	0	0
Nursery trees						0	0	0
Spruce						0	0	0
Pine						0	0	0
Fir						0	0	0
Douglas fir						0	0	0
Other conifers						0	0	0
Oak						0	0	0
Beech						0	0	0
Poplar						0	0	0
Rose bushes						0	0	0
Fruit trees						0	0	0
Other plant products	X					0	0	0
Seeds and plants	X			0	0	0	0	0
Cereal seeds	X			0	0	0	0	0
Fodder seeds and other	X			0	0	0	0	0
Potato plants	X			0	0	0	0	0
Beet	X	0			0	0	0	0
Fodder	X				0	0	0	0
Pulses	X				0	0	0	0
Protein peas	X				0	0	0	0
Tobacco	X				0	0	0	0
Flax	X				0	0	0	0
Hops	X				0	0	0	0
Animals and animal products	X	0	0	0	0	0	0	0
Livestock	X	0	0	0	0	0	0	0
Large cattle	X	0	0	0	0	0	0	0
Lean cattle	X				0	0	0	0
Beef cattle	X				0	0	0	0
Young cattle	X				0	0	0	0
Steers	X				0	0	0	0
Heifers	X				0	0	0	0
Cows	X				0	0	0	0
Bulls	X				0	0	0	0
Calves	X			0	0	0	0	0
Veal calves	X	0	0	0	0	0	0	0
Eight-day-old calves	X			0	0	0	0	0
Pigs	X	0	0	0	0	0	0	0
Sheep	X	0	0	0	0	0	0	0
Horse	X	0			0	0	0	0
Other animals	X			0	0	0	0	0
Rabbit	X	0	0	0	0	0	0	0
Poultry	X	0	0	0	0	0	0	0
Turkey hens and cocks	X				0	0	0	0
Duck for roasting	X				0	0	0	0
Fattened duck	X					0	0	0
Chicken	X	0	0	0	0	0	0	0
Label chicken	X					0	0	0
Standard chicken	X					0	0	0
Export chicken	X					0	0	0
Guineafowl	X				0	0	0	0
Label guineafowl	X					0	0	0
Guineafowl (other)	X					0	0	0
Other animal products	X			0	0	0	0	0
Milk	X	0	0	0	0	0	0	0
Cow's milk	X	0	0	0	0	0	0	0
Ewe's milk	X	0				0	0	0
Eggs	-	-	-	-	-	-	-	-

Review of IPPAP items according to base years (continued and end)

	D	1955	1970	1975	1980	1990	1995	2000
Fruit and vegetables	X			0	0	0	0	0
Vegetable	X			0	0	0	0	0
Garlic	X				0	0	0	0
Artichoke	X				0	0	0	0
Asparagus	X				0	0	0	0
Aubergine	X				0	0	0	0
Beetroot	X				0	0	0	0
Carrot	X				0	0	0	0
Celeriac	X				0	0	0	0
Mushroom	X				0	0	0	0
Cauliflower	X				0	0	0	0
Round cabbage	X				0	0	0	0
Broccoli	X				0		0	0
Cucumber	X				0	0	0	0
Courgette	X				0	0	0	0
Shallot	X				0	0	0	0
Endive	X				0	0	0	0
Beans for shelling	X				0	0	0	0
Green bean	X				0	0	0	0
Onion	X				0	0	0	0
Spinach	X				0	0	0	0
Melon	X				0	0	0	0
Turnip	X				0	0	0	0
Parsley	X				0	0	0	0
Leek	X				0	0	0	0
Pepper	X				0	0	0	0
Radish	X				0	0	0	0
Tomato	X				0	0	0	0
Salad	X				0	0	0	0
Lamb's lettuce	X					0		0
Chicory	X				0	0	0	0
Curly endive	X					0	0	0
Broad-leaved endive	X					0	0	0
Lettuce	X				0	0	0	0
Round lettuce	X					0	0	0
Batavia lettuce	X						0	0
Fruit	X			0	0	0	0	0
Apricot	X				0	0	0	0
Cherry	X				0	0	0	0
Clementine	X				0	0	0	0
Strawberry	X				0	0	0	0
Kiwi fruit	X					0	0	0
Plum	X				0	0	0	0
Grape	X				0	0	0	0
Chestnut	X					0	0	0
Walnut	X					0	0	0
Raspberry	X						0	0
Peach	X				0	0	0	0
Nectarine	X					0	0	0
White peach	X					0	0	0
Yellow peach	X					0	0	0
Pear	X				0	0	0	0
Summer pear	X					0	0	0
Autumn pear	X					0	0	0
Winter pear	X					0	0	0
Apple	X				0	0	0	0
Golden Delicious	X					0	0	0
Gala	X						0	0
Other apples	X					0	0	0

IPPAP - Weighting coefficients in base year 2000

For fixed baskets, the coefficient entered in the year column is used every month

	Jan	Feb	Mar	April	May	June	July	Aug	Sept	Oct	Nov	Dec	Year
General index													100 000
General index except fruit & vegetables													88 920
Plant products													42 994
Cereals													13 765
Barley													2 287
Milling barley													1 848
Brewing barley													439
Soft wheat													7 383
Hard wheat													372
Oats													94
Sorghum													66
Rye													30
Triticale													229
Maize													3 214
Potatoes													2 074
Potatoes for storage													1 810
Potatoes for processing	332	332	332	332	332	332	332	332	332	332	332	332	332
Unprocessed potatoes for storage	1 478	1 478	1 478	1 478	-	-	-	1 478	1 478	1 478	1 478	1 478	1 478
Firm-fleshed varieties	1 000	1 000	1 000	1 000	-	-	-	1 000	1 000	1 000	1 000	1 000	1 000
Roseval	25	25	25	25	-	-	-	25	25	25	25	25	25
Charlotte	560	560	560	560	-	-	-	560	560	560	560	560	560
Nicola	184	184	184	184	-	-	-	184	184	184	184	184	184
Belle de Fontenay	30	30	30	30	-	-	-	30	30	30	30	30	30
Franceline	58	58	58	58	-	-	-	58	58	58	58	58	58
Chérie	48	48	48	48	-	-	-	48	48	48	48	48	48
Amandine	96	96	96	96	-	-	-	96	96	96	96	96	96
Normal-fleshed varieties	478	478	478	478	-	-	-	478	478	478	478	478	478
Bintjes	51	51	51	51	-	-	-	51	51	51	51	51	51
Agata	311	311	311	311	-	-	-	311	311	311	311	311	311
Mona-Lisa	116	116	116	116	-	-	-	116	116	116	116	116	116
Potatoes for potato flour	113	113	113	113	113	113	113	113	113	113	113	113	113
Early potatoes	-	-	-	-	172	172	172	-	-	-	-	-	152
Wine													16 578
Quality wine													13 968
Wine with Appellation d'origine contrôlée													13 832
Bordeaux													3 623
White Bordeaux													301
Red Bordeaux													3 323
Burgundy													1 567
White Burgundy													872
Red Burgundy													695
Alsace													936
Côtes du Rhône													1 361
Pays Nantais													148
Anjou et Saumur													354
Gaillac													77
Dordogne wine													257
Provence wine													494
Fitou, Corbières, Minervois													483
Champagne													2 534
Natural sweet wine (VDN)													198
Specific wine of superior quality (VDQS)													136
Other wine													2 610
Ordinary wine (VCC)													2 048
Local wine													1 192
Table wine													855
Wine for Cognac													402
Oilseeds													1 800
Rape													1 210
Sunflower													508
Soya													67
Horticultural commodities													3 383
Cut flowers													657
Rose	144	225	148	178	240	102	80	59	80	219	157	239	156
Tulip	78	135	139	42	-	-	-	-	-	16	60	59	44
Gladiolus	3	-	4	14	26	29	16	8	10	26	20	13	14
Chrysanthemum	22	22	17	17	20	13	16	11	13	31	28	42	21
Anemone	15	15	7	2	-	-	-	-	-	4	8	7	5
Asparagus													8
Dahlia	-	-	-	-	-	-	9	7	12	12	7	-	4
Gerbera	51	65	32	27	35	26	32	20	27	42	50	60	39
Iris	6	6	12	10	6	4	-	-	-	-	9	7	5
Lily	47	51	36	32	47	36	31	26	24	31	40	42	37
Antirrhinum	20	16	11	12	9	2	-	-	2	9	15	12	9
Lily of the valley	-	-	-	468	-	-	-	-	-	-	-	-	39
Carnation	13	16	14	12	11	7	4	3	4	11	12	12	10
Carnation uniflora	9	11	10	8	6	3	2	1	2	6	7	8	4
Carnation multiflora	4	5	4	4	5	4	2	2	2	5	5	4	6
Ranunculus	155	87	136	54	8	-	-	-	-	89	147	105	65
Christmas trees	-	-	-	-	-	-	-	-	-	-	-	432	36

IPPAP weighting coefficients in base year 2000 (continued)

	Jan	Feb	Mar	April	May	June	July	Aug	Sept	Oct	Nov	Dec	Year
Container-grown plants													1 106
Bedding plants													411
Nursery stock													1 209
Ornamental nursery stock													304
Hedge conifers													61
Other conifers													61
Broad-leaved hedges													60
Other broad-leaved trees													61
Other ornamental nursery stock													59
Nursery trees													304
Spruce													35
Pine													35
Fir													35
Douglas fir													35
Other conifers													35
Oak													35
Beech													35
Poplar													35
Rose bushes													300
Fruit trees													302
Other plant products													5 394
Seeds and plants													1 539
Cereal seeds													441
Fodder seeds and other													593
Potato plants													99
Beet													2 347
Fodder													256
Pulses													38
Protein peas													503
Tobacco													204
Flax													179
Hops													14
Animals and animal products													45 926
Livestock													20 974
Large cattle													10 587
Lean cattle													1 406
Beef cattle													9 182
Young cattle													2 915
Steers													743
Heifers													1 336
Cows													4 024
Bulls													163
Calves													2 654
Veal calves													2 278
Eight-day-old calves													376
Pigs													6 200
Sheep													1 273
Horse													260
Other animals													7 228
Poultry													6 258
Turkey hens and cocks													1 725
Duck for roasting													502
Fattened duck													1 001
Chicken													2 667
Label chicken													848
Standard chicken													1 336
Export chicken													430
Guineafowl													275
Label guineafowl													171
Guineafowl (other)													104
Rabbit													546
Other animal products													17 724
Milk													15 818
Cow's milk													15 075
Ewe's milk													410
Eggs													1 657

IPPAP weighting coefficients in base year 2000 (continued and end)

	Jan	Feb	Mar	April	May	June	July	Aug	Sept	Oct	Nov	Dec	Year
Fruit and vegetables													11 080
Vegetable	1 434	1 448	1 849	2 063	2 597	2 957	3 295	2 986	2 480	2 056	1 722	1 555	6 141
Garlic	-	-	-	-	30	30	97	154	126	67	40	29	133
Artichoke	-	-	7	61	91	60	41	34	54	32	8	-	90
Asparagus	-	-	73	259	251	20	-	-	-	-	-	-	140
Aubergine	-	-	-	-	13	45	70	67	37	20	-	-	59
Beetroot	14	13	14	12	12	10	8	6	10	12	13	11	31
Carrot	108	104	96	42	85	199	134	69	84	105	100	88	282
Celery	18	15	13	9	5	-	16	22	33	46	47	18	56
Mushroom	82	71	78	71	77	65	56	50	67	83	73	77	197
Round cabbage	68	61	45	6	-	-	-	3	38	58	57	46	89
Broccoli	-	-	-	-	2	24	31	16	30	32	9	-	33
Cauliflower	110	149	157	150	58	17	30	44	49	88	97	102	244
Cucumber	-	26	64	110	148	188	171	163	99	55	7	-	239
Courgette	-	-	24	80	208	279	138	106	47	19	-	-	209
Shallot	19	18	17	19	14	13	17	26	24	22	26	24	56
Endive	273	256	239	158	86	40	22	17	67	193	241	274	433
Spinach	31	35	54	28	4	3	3	3	5	22	28	20	55
Beans for shelling	-	-	-	-	-	-	8	77	101	36	-	-	52
Green beans	-	-	-	-	26	166	179	83	59	47	-	-	130
Melon	-	-	-	-	34	269	821	711	221	-	-	-	477
Turnip	29	25	23	30	21	23	17	18	24	29	27	25	68
Onion	29	31	34	16	-	11	61	115	239	39	24	18	143
Parsley	21	20	32	19	21	24	26	22	25	27	25	36	69
Leek	109	86	73	25	181	190	89	49	93	118	106	100	283
Pepper	-	-	-	-	3	19	54	70	43	32	-	-	51
Radish	29	40	65	54	48	38	34	23	23	28	26	23	100
Salad	418	348	371	333	255	197	219	272	267	456	569	582	996
Chicory	124	102	77	45	21	13	28	43	59	149	192	187	242
Curly endive	82	68	50	21	19	8	14	15	30	70	104	114	138
Broad-leaved endive	42	34	27	24	2	5	14	28	29	79	88	73	103
Lettuce	204	162	205	226	201	159	166	200	171	226	269	279	573
Batavia lettuce	80	60	81	97	98	86	89	103	84	104	108	107	255
Round lettuce	124	102	124	129	103	73	77	97	87	122	161	172	318
Lamb's lettuce	48	49	52	28	7	5	3	2	10	35	51	57	80
Tomato	-	74	272	472	787	871	779	609	484	281	108	-	1 100
Fruit	963	1 104	1 096	1 038	1 718	1 948	2 495	2 319	1 135	1 058	1 025	986	4 939
Apricot	-	-	-	-	-	353	774	42	-	-	-	-	342
Cherry	-	-	-	-	530	443	-	-	-	-	-	-	285
Chestnut	-	-	-	-	-	-	-	-	-	63	71	-	39
Clementine	39	-	-	-	-	-	-	-	-	-	22	71	39
Strawberry	-	-	26	417	931	253	10	-	-	-	-	-	479
Raspberry	-	-	-	-	-	67	70	78	57	27	-	-	87
Kiwi fruit	84	86	98	72	36	-	-	-	-	-	58	59	144
Walnut	-	-	-	-	-	-	-	-	45	167	151	133	145
Peach	-	-	-	-	19	636	1181	941	177	-	-	-	864
Nectarine	-	-	-	-	-	286	518	412	81	-	-	-	379
White peach	-	-	-	-	6	144	274	223	41	-	-	-	201
Yellow peach	-	-	-	-	13	206	389	306	55	-	-	-	283
Pear	93	43	36	-	-	-	167	507	21	74	65	79	317
Summer pear	-	-	-	-	-	-	167	507	21	-	-	-	203
Autumn pear	73	34	26	-	-	-	-	-	-	74	65	64	98
Winter pear	20	9	10	-	-	-	-	-	-	-	-	15	16
Apple	729	955	916	530	171	116	-	200	252	443	639	626	1 631
Golden Delicious	240	392	440	397	150	116	-	-	-	152	265	225	695
Gala	56	36	-	-	-	-	-	200	182	155	86	64	228
Apple, other	433	527	476	133	21	-	-	-	70	136	288	337	708
Plum	-	-	-	-	-	44	248	311	52	-	-	-	192
Grape	-	-	-	-	-	-	-	198	510	265	-	-	285

The annual weighting coefficients for fruit and vegetables are aligned with those of other items and groups and with the general index. Their monthly weighting coefficients are shown at their real value, about 4 times higher in order to show the details used in the calculation.

IPPAP – base year 2000 – Monthly weighting coefficients for calculating prices and annual indices

	Jan	Feb	Mar	April	May	June	July	Aug	Sept	Oct	Nov	Dec
Cereals	1	1	1	1	1	1	1	1	1	1	1	1
Potatoes for storage	1	1	1	1				1	1	1	1	1
Early potatoes					2 310	4 911	2 825					
Potato for potato flour									1			
Wine	1	1	1	1	1	1	1	1	1	1	1	
Champagne										1		
Wine for Cognac										1	1	1
Rape	11	11	11	4	4	4	79	79	79	6	6	6
Sunflower	12	12	12	6	6	6	50	50	50	32	32	32
Soya	8	8	8	2	2	2	12	12	12	79	79	79
Rose	522	634	711	1 133	1 483	927	654	553	703	960	794	925
Tulip	1 380	2 614	3 029	842	59				32	249	714	1 077
Gladiolus	227	48	173	616	1 596	1 749	893	692	679	1 687	1 011	630
Chrysanthemum	684	629	735	845	867	646	797	675	716	1 326	951	1 129
Anemone	1 937	2 628	1 799	487	38				68	842	1 159	1 042
Dahlia						500	1 500	1 500	2 500	2 500	1 500	
Gerbera	732	1 145	1 172	995	1 097	684	586	613	711	800	743	723
Iris	1 047	914	1 495	1 427	931	481	134	60	226	947	1 016	1 323
Lily	820	862	959	858	1 218	1 052	663	581	575	779	782	852
Antirrhinum	1 100	1 462	1 405	1 292	991	248	18	48	218	966	1 184	1 069
Lily of the valley				1								
Carnation uniflora	862	1 117	1 377	1 095	1 433	637	346	250	365	767	864	889
Carnation multiflora	726	801	864	811	1 632	964	480	543	574	884	866	754
Ranunculus	1 165	862	3 217	1 216	251					923	1 389	966
Fir												1
Contr pl, bedding, nursery	1	1	1	1	1	1	1	1	1	1	1	1
Beet										1		
Protein peas	14	14	14	4	4	4	70	70	70	12	12	12
Tobacco										1		
Hops										1		
Large beef cattle	251	251	251	244	244	244	248	248	248	256	256	256
Young cattle	1	1	1	1	1	1	1	1	1	1	1	1
Large lean cattle	1	1	1	1	1	1	1	1	1	1	1	1
Veal calves	250	250	250	254	254	254	247	247	247	249	249	249
Eight-day-old calves	256	256	256	251	251	251	244	244	244	248	248	248
Pigs	254	254	254	295	295	295	246	246	246	214	214	214
Sheep	245	245	245	295	295	295	246	246	246	214	214	214
Horse	273	273	273	253	253	253	222	222	222	253	253	253
Cow's milk	19 737	19 719	22 203	23 433	24 506	21 475	19 392	16 545	15 496	17 272	17 227	18 250
Ewe's milk	1	1	1	1	1	1	1	1	1	1	1	1
Poultry, eggs and rabbit	1	1	1	1	1	1	1	1	1	1	1	1

The weight allocated to each month for calculating prices and average annual indices corresponds to the quantities sold each month in the base year. However, it was not deemed necessary or possible to allocate these weighting coefficients to all items for reasons relating to the vagueness of seasonal patterns. The coefficients of fruit and vegetables are identical to those of the variable basket, the sum of the quantities sold every month in the base year, multiplied by the average price in the same year. For seasonal prices, the annual average affects the strict period of trading.

Index of farm-gate prices of agricultural products (IPPAP) - Base year 2000 retropolated

Name of item	Weight	1949	1950	1951	1952	1953	1954	1955	1956	1957	1958	1959
General index	100 000											
General index except fruit and	88 920	15.6	15.7	18.5	19.9	18.6	18.1	18.2	19.9	21.3	26.0	24.5
Plant products	42 994	18.7	19.3	20.4	22.2	21.1	19.7	19.0	22.0	23.7	33.0	28.1
Cereals	13 765											
Barley	2 287											
Milling barley	1 848	26.9	25.5	35.6	38.4	34.2	31.4	34.8	34.4	34.1	37.7	42.1
Brewing barley	439											
Soft wheat	7 383	35.4	37.2	48.7	52.1	51.5	47.4	46.6	53.1	43.9	48.3	52.8
Maize	3 214											
Potatoes	2 074	11.5	14.1	10.3	14.6	14.0	10.6	7.7	12.9	14.6	26.5	22.0
Potatoes for storage	1 810											
Potatoes for processing	332											
Unprocessed potatoes for storage	1 478											
Firm-fleshed varieties	1 000											
Normal-fleshed varieties	478											
Potatoes for potato flour	113											
Early potatoes	152											
Wine	16 578	8.9	8.7	7.5	7.7	7.1	6.9	7.0	8.3	11.7	20.3	12.7
Quality wine	13 968											
Champagne	2 534											
Other wine	2 610											
Ordinary wine (VCC)	2 048	11.5	11.3	9.6	9.9	9.1	8.9	9.0	10.7	15.1	26.2	16.4
Local wine	1 192											
Table wine	855											
Wine for Cognac	402											
Oilseeds	1 800											
Rape	1 210											
Sunflower	508											
Horticultural commodities	3 383											
Cut flowers	657											
Container-grown plants	1 106											
Bedding plants	411											
Nursery stock	1 209											
Other plant products	5 394											
Seeds and plants	1 539											
Beet	2 347											
Protein peas	503											
Animals and animal products	45 926	14.0	13.9	17.3	18.5	17.1	17.0	17.4	18.6	19.9	22.6	22.5
Livestock	20 974	12.2	12.0	16.5	17.4	15.2	16.2	16.6	17.4	19.9	23.2	21.9
Large cattle	10 587	10.6	10.3	14.4	15.2	12.0	11.9	13.6	14.9	16.7	21.3	20.7
Lean cattle	1 406											
Beef cattle	9 182											
Young cattle	2 915											
Cows	4 024											
Calves	2 654											
Veal calves	2 278	6.6	6.8	8.7	10.4	9.3	9.8	9.7	11.1	12.0	14.0	13.6
Eight-day-old calves	376											
Pigs	6 200	22.5	21.2	32.4	30.7	28.5	33.6	30.8	28.9	35.6	37.7	34.7
Sheep	1 273	10.8	11.5	12.1	13.5	13.5	14.3	15.5	15.8	17.7	19.9	15.9
Horse	260											
Other animals	7 228	26.9	26.8	32.4	36.9	34.9	34.9	35.9	38.0	36.6	40.4	38.3
Poultry	6 258	37.4	36.5	44.1	50.1	48.1	48.3	48.4	49.9	48.3	51.7	48.5
Turkey hens and cocks	1 725											
Duck for roasting	502											
Fattened duck	1 001											
Chicken	2 667	37.0	36.1	43.6	49.5	47.6	47.8	47.8	49.3	47.7	51.1	47.9
Label chicken	848											
Standard chicken	1 336											
Guineafowl	275											
Rabbit	546	12.3	13.2	16.0	18.3	16.3	16.1	18.4	21.1	20.2	24.6	24.5
Other animal products	17 724	14.9	14.6	17.0	19.4	19.3	17.7	19.0	21.8	20.9	24.3	22.1
Milk	15 818	13.8	13.9	14.6	15.7	15.6	13.9	14.1	15.2	15.3	16.4	18.9
Cow's milk	15 075	13.8	13.9	14.6	15.6	15.5	13.8	14.0	15.2	15.2	16.3	18.8
Ewe's milk	410											
Eggs	1 657	29.1	27.9	31.9	36.5	37.5	33.7	35.4	40.6	39.0	44.9	39.9
Fruit and vegetables	11 080											
Vegetable	6 141											
Carrot	282											
Cauliflower	244											
Endive	433											
Melon	477											
Leek	283											
Tomato	1 100											
Salad	996											
Lettuce	573											
Fruit	4 939											
Strawberry	479											
Peach	864											
Pear	317											
Apple	1 631											

Source : INSEE and SCEES for fruit and vegetables

Index of farm-gate prices of agricultural products

base year 2000 retroprojected

Name of item	Weight	1960	1961	1962	1963	1964	1965	1966	1967	1968	1969
General index	100 000										
General index except fruit and	88 920	25.4	25.9	27.5	30.0	29.7	30.1	31.5	31.7	32.0	34.1
Plant products	42 994	27.7	28.3	31.6	30.0	29.1	29.0	30.9	32.9	33.5	34.9
Cereals	13 765										
Barley	2 287										
Milling barley	1 848	42.7	41.3	45.9	43.7	41.8	43.6	47.7	50.6	50.5	50.6
Brewing barley	439										
Soft wheat	7 383	54.5	57.6	58.9	60.5	56.4	56.6	61.9	65.8	64.3	62.1
Maize	3 214										
Potatoes	2 074	15.4	12.0	26.5	15.9	14.2	21.8	24.4	18.1	11.9	26.1
Potatoes for storage	1 810										
Potatoes for processing	332										
Unprocessed potatoes for storage	1 478										
Firm-fleshed varieties	1 000										
Normal-fleshed varieties	478										
Potatoes for potato flour	113										
Early potatoes	152										
Wine	16 578	13.4	14.1	15.3	14.0	14.5	13.7	14.6	16.1	17.5	19.3
Quality wine	13 968			9.9	8.7	9.5	8.9	9.9	11.0	12.3	13.4
Champagne	2 534										
Other wine	2 610										
Ordinary wine (VCC)	2 048	17.3	18.2	19.7	18.1	18.7	17.6	18.8	20.8	22.6	24.8
Local wine	1 192										
Table wine	855										
Wine for Cognac	402										
Oilseeds	1 800										
Rape	1 210										
Sunflower	508										
Horticultural commodities	3 383										
Cut flowers	657										
Container-grown plants	1 106										
Bedding plants	411										
Nursery stock	1 209										
Other plant products	5 394										
Seeds and plants	1 539										
Beet	2 347										
Protein peas	503										
Animals and animal products	45 926	23.9	24.3	25.4	29.2	29.2	29.8	31.0	30.5	30.6	32.9
Livestock	20 974	23.6	24.7	25.5	30.7	31.2	31.9	33.8	32.4	32.9	36.6
Large cattle	10 587	21.8	21.7	24.1	27.2	29.3	30.8	30.9	30.6	31.3	34.6
Lean cattle	1 406										
Beef cattle	9 182										
Young cattle	2 915										
Cows	4 024										
Calves	2 654										
Veal calves	2 278	14.6	14.9	15.6	19.7	19.9	21.3	22.1	21.4	22.1	24.4
Eight-day-old calves	376										
Pigs	6 200	39.2	41.6	37.5	48.2	45.5	43.1	50.9	45.4	44.5	51.9
Sheep	1 273	17.4	23.4	26.2	31.6	30.2	30.4	31.7	32.4	35.5	36.4
Horse	260										
Other animals	7 228	39.3	37.0	39.2	40.2	41.4	40.7	41.3	43.2	43.5	45.2
Poultry	6 258	49.5	46.2	48.2	47.3	48.5	46.3	46.2	48.3	48.1	49.7
Turkey hens and cocks	1 725										
Duck for roasting	502										
Fattened duck	1 001										
Chicken	2 667	48.9	45.7	47.6	46.8	47.9	45.8	45.7	47.8	47.6	49.1
Label chicken	848										
Standard chicken	1 336										
Guineafowl	275										
Rabbit	546	25.1	24.2	26.3	29.2	30.0	30.4	31.4	32.2	32.3	33.9
Other animal products	17 724	23.4	23.8	24.7	28.5	24.1	27.7	27.8	27.1	26.4	28.6
Milk	15 818	19.8	19.4	20.6	22.1	22.6	22.4	23.1	23.9	23.8	24.2
Cow's milk	15 075	19.7	19.3	20.5	22.1	22.5	22.4	23.1	23.8	23.7	24.1
Ewe's milk	410										
Eggs	1 657	42.5	43.8	44.7	52.1	40.1	48.9	48.2	45.0	42.5	46.5
Fruit and vegetables	11 080										
Vegetable	6 141										
Carrot	282										
Cauliflower	244										
Endive	433										
Melon	477										
Leek	283										
Tomato	1 100										
Salad	996										
Lettuce	573										
Fruit	4 939										
Strawberry	479										
Peach	864										
Pear	317										
Apple	1 631										

Source : INSEE and SCEES for fruit and vegetables

Index of farm-gate prices of agricultural products

base year 2000 retroplated

Name of item	Weight	1970	1971	1972	1973	1974	1975	1976	1977	1978	1979
General index	100 000	34.5	36.0	41.1	45.7	47.7	51.3	58.7	63.9	66.2	70.4
General index except fruit and	88 920	36.1	37.5	42.5	47.6	48.9	52.6	60.4	63.9	67.7	72.3
Plant products	42 994	38.1	37.9	42.4	49.0	52.9	54.0	67.5	68.7	71.7	77.8
Cereals	13 765	67.1	69.0	73.1	75.6	92.8	91.6	105.7	114.5	120.3	125.0
Barley	2 287						82.6	96.6	101.1	105.2	113.1
Milling barley	1 848	56.4	58.7	63.3	62.0	78.5	80.2	93.2	97.8	100.6	109.8
Brewing barley	439						98.5	117.7	122.0	132.4	134.9
Soft wheat	7 383	68.0	70.5	73.9	76.5	86.6	92.7	107.5	116.1	123.9	128.3
Maize	3 214	64.0	64.9	70.1	72.9	97.7	85.6	100.5	111.8	116.8	119.6
Potatoes	2 074	29.5	15.2	32.1	44.5	35.9	45.6	135.3	65.2	31.4	57.3
Potatoes for storage	1 810										
Potatoes for processing	332										
Unprocessed potatoes for storage	1 478										
Firm-fleshed varieties	1 000										
Normal-fleshed varieties	478										
Potatoes for potato flour	113										
Early potatoes	152										
Wine	16 578	21.6	21.1	25.2	34.0	28.5	26.7	32.0	37.8	43.3	47.4
Quality wine	13 968	15.9	16.8	22.7	30.2	23.8	19.6	26.3	33.9	39.4	44.1
Champagne	2 534										
Other wine	2 610										
Ordinary wine (VCC)	2 048	27.8	25.6	26.8	36.8	33.0	34.6	38.2	41.9	47.1	50.5
Local wine	1 192										
Table wine	855										
Wine for Cognac	402										
Oilseeds	1 800										
Rape	1 210						99.0	98.4	101.1	112.5	126.2
Sunflower	508										
Horticultural commodities	3 383										
Cut flowers	657										
Container-grown plants	1 106										
Bedding plants	411										
Nursery stock	1 209										
Other plant products	5 394										
Seeds and plants	1 539						52.0	68.7	67.2	68.6	73.0
Beet	2 347										
Protein peas	503										
Animals and animal products	45 926	34.4	36.8	42.0	46.1	46.0	51.1	55.3	60.1	64.3	67.9
Livestock	20 974	38.0	39.5	46.3	52.3	49.8	56.0	59.7	65.2	69.0	72.6
Large cattle	10 587	36.9	39.3	47.9	52.0	49.8	56.8	59.1	65.6	70.4	74.0
Lean cattle	1 406										
Beef cattle	9 182										
Young cattle	2 915										
Cows	4 024										
Calves	2 654						38.2	42.0	46.6	52.6	54.0
Veal calves	2 278	25.6	27.2	33.7	35.9	33.7	37.9	41.0	45.4	50.7	52.2
Eight-day-old calves	376						43.2	52.0	57.8	68.7	69.4
Pigs	6 200	50.9	49.6	52.9	67.4	60.9	67.7	75.7	78.6	78.1	83.7
Sheep	1 273	36.4	37.7	42.5	48.2	53.7	59.3	60.0	67.7	71.9	74.6
Horse	260										
Other animals	7 228	46.3	48.9	51.4	56.4	58.9	64.4	69.7	77.3	83.1	83.2
Poultry	6 258	50.4	52.8	55.5	60.8	61.6	66.0	70.9	78.2	83.7	84.7
Turkey hens and cocks	1 725										
Duck for roasting	502										
Fattened duck	1 001										
Chicken	2 667	49.8	52.2	54.9	60.1	60.9	65.3	68.5	76.4	81.6	85.0
Label chicken	848										
Standard chicken	1 336										
Guineafowl	275										
Rabbit	546	35.6	38.6	40.6	44.7	51.4	59.1	65.2	73.1	79.4	77.6
Other animal products	17 724	27.8	31.4	35.0	35.9	38.5	42.2	46.7	50.2	54.4	58.3
Milk	15 818	26.6	29.6	32.9	33.9	36.5	40.8	44.3	47.2	51.6	56.1
Cow's milk	15 075	26.5	29.6	32.8	33.8	36.4	40.6	44.2	47.1	51.4	55.9
Ewe's milk	410										
Eggs	1 657	42.4	51.4	58.8	59.5	62.4	59.7	73.9	85.1	86.2	84.1
Fruit and vegetables	11 080	21.8	24.3	29.4	30.4	38.2	40.1	43.8	64.0	53.2	54.1
Vegetable	6 141	22.2	24.4	26.3	29.1	38.1	38.3	45.2	53.0	49.8	55.7
Carrot	282	28.3	34.7	31.6	38.1	48.6	56.7	49.6	91.7	49.1	54.7
Cauliflower	244	30.0	23.7	33.5	41.2	43.7	61.3	51.5	94.2	69.0	107.3
Endive	433	28.4	31.4	31.9	47.0	51.9	65.9	89.9	98.1	92.8	90.5
Melon	477	24.7	29.0	37.6	27.9	42.3	40.2	36.2	58.1	68.0	45.3
Leek	283	21.1	22.9	23.5	29.4	42.9	33.6	50.9	52.5	51.4	85.2
Tomato	1 100	24.3	28.5	34.5	32.9	40.8	45.1	44.4	53.7	55.8	47.4
Salad	996	34.2	40.0	41.2	40.7	58.5	41.4	54.8	53.0	48.2	64.7
Lettuce	573										
Fruit	4 939	20.7	23.6	33.7	31.8	37.5	42.0	39.6	82.6	57.9	49.1
Strawberry	479	25.3	21.6	25.7	25.6	26.5	31.9	31.6	39.5	39.5	45.5
Peach	864	28.8	20.2	26.6	28.8	38.8	81.7	37.9	63.8	59.9	60.7
Pear	317	16.7	18.2	27.3	26.6	28.0	35.4	23.1	58.1	49.6	39.1
Apple	1 631	26.1	34.3	49.9	45.8	53.8	44.1	60.0	134.9	73.3	58.8

Source : INSEE and SCEES for fruit and vegetables

Index of farm-gate prices of agricultural products

base year 2000 retroplated

Name of item	Weight	1980	1981	1982	1983	1984	1985	1986	1987	1988	1989
General index	100 000	74.4	83.2	94.0	101.3	104.9	106.5	106.3	104.5	105.0	112.6
General index except fruit and	88 920	76.4	84.9	96.7	103.6	107.0	107.9	107.9	106.0	107.0	115.5
Plant products	42 994	81.9	90.2	103.6	112.1	115.4	112.5	115.1	110.7	108.9	117.9
Cereals	13 765	133.0	149.4	168.0	182.2	181.2	174.8	177.0	170.5	161.9	158.9
Barley	2 287	117.2	132.6	153.8	166.0	170.3	156.8	158.0	148.0	148.8	144.6
Milling barley	1 848	114.1	126.1	144.4	156.6	161.5	154.0	153.7	141.0	137.6	138.8
Brewing barley	439	138.4	167.6	201.0	214.6	217.0	180.3	186.9	186.0	202.3	178.1
Soft wheat	7 383	136.6	152.6	169.8	183.0	178.6	172.7	180.5	173.9	165.1	164.7
Maize	3 214	127.0	144.7	164.1	179.6	180.6	183.5	170.6	167.6	153.4	144.2
Potatoes	2 074	42.1	57.8	83.1	94.9	137.7	49.4	69.5	60.6	67.5	98.2
Potatoes for storage	1 810										
Potatoes for processing	332										
Unprocessed potatoes for storage	1 478										
Firm-fleshed varieties	1 000										
Normal-fleshed varieties	478	66.2	91.6	139.1	167.0	238.4	78.3	110.3	92.7	104.3	165.5
Potatoes for potato flour	113	75.4	84.3	93.8	102.2	107.2	107.2	109.2	106.7	105.1	103.6
Early potatoes	152	58.2	92.0	113.3	90.4	184.0	51.6	103.2	99.7	116.1	134.1
Wine	16 578	49.1	53.1	62.8	60.3	63.2	71.0	71.9	68.7	70.2	84.3
Quality wine	13 968	50.7	53.0	63.0	57.8	61.7	72.2	72.3	69.6	70.5	86.1
Champagne	2 534	88.4	75.3	71.6	62.3	68.0	86.7	82.0	82.9	89.0	100.7
Other wine	2 610										
Ordinary wine (VCC)	2 048	46.2	52.3	61.4	62.4	63.9	68.3	70.1	66.4	68.7	80.6
Local wine	1 192	42.9	47.8	55.2	58.5	61.0	62.5	65.3	63.7	63.8	73.0
Table wine	855	48.7	55.2	64.9	65.7	67.2	72.1	73.9	69.7	72.4	85.2
Wine for Cognac	402										
Oilseeds	1 800										
Rape	1 210	134.7	157.2	183.7	210.0	210.7	211.3	207.3	180.7	176.0	199.3
Sunflower	508	169.3	206.1	243.6	283.4	283.8	278.1	265.5	241.3	209.7	280.1
Horticultural commodities	3 383										
Cut flowers	657	90.4	103.3	111.5	128.1	132.0	140.3	134.7	141.3	134.6	132.7
Container-grown plants	1 106										
Bedding plants	411										
Nursery stock	1 209	41.6	46.2	48.3	59.1	68.7	78.3	81.0	80.2	84.4	84.1
Other plant products	5 394										
Seeds and plants	1 539	78.6	90.1	102.3	136.3	136.9	120.3	136.1	125.0	136.8	158.0
Beet	2 347	74.3	65.3	71.5	85.8	84.1	85.2	87.9	89.7	85.4	90.6
Protein peas	503	166.0	183.8	212.7	237.4	248.7	248.7	253.1	239.9	215.0	217.1
Animals and animal products	45 926	71.9	80.6	91.1	97.0	100.4	103.6	102.0	101.8	104.5	112.5
Livestock	20 974	76.0	86.6	100.1	104.0	105.3	109.5	104.9	102.6	107.5	119.8
Large cattle	10 587	79.5	89.7	103.6	108.8	108.2	113.5	108.3	108.8	115.6	124.4
Lean cattle	1 406										
Beef cattle	9 182	80.6	90.9	105.0	110.2	109.7	115.0	109.7	110.2	117.2	126.1
Young cattle	2 915	82.1	92.0	105.3	115.7	118.1	119.4	117.5	117.6	117.1	127.9
Cows	4 024	81.1	92.8	107.4	108.5	107.0	115.7	107.2	109.6	120.2	129.6
Calves	2 654	53.9	64.3	74.1	77.3	76.0	80.5	82.4	85.3	96.3	107.8
Veal calves	2 278	52.6	63.2	72.1	75.7	74.5	78.9	80.9	83.0	93.9	105.1
Eight-day-old calves	376	66.3	74.6	93.6	92.6	90.7	94.4	96.0	108.0	118.9	133.4
Pigs	6 200	86.9	98.4	116.9	115.6	122.4	126.7	116.7	106.0	101.7	125.5
Sheep	1 273	74.0	81.5	87.2	100.7	102.9	99.7	97.4	91.4	93.6	91.8
Horse	260	103.9	120.7	136.0	139.5	137.3	132.9	122.8	118.4	129.3	142.3
Other animals	7 228	90.1	100.2	110.6	118.1	129.2	128.1	127.1	122.2	121.9	121.4
Poultry	6 258	90.7	101.5	111.8	118.9	131.5	130.1	127.2	122.8	124.2	122.9
Turkey hens and cocks	1 725	79.2	86.7	106.8	113.8	126.4	121.7	125.1	120.2	129.6	123.2
Duck for roasting	502	90.1	96.5	104.2	112.5	123.7	118.9	123.1	120.2	116.5	116.7
Fattened duck	1 001										
Chicken	2 667	91.3	103.1	110.3	117.6	129.9	129.5	123.8	120.0	120.0	120.4
Label chicken	848	76.7	82.9	89.9	98.1	105.8	112.1	112.4	111.4	113.4	115.0
Standard chicken	1 336	95.6	109.2	116.5	123.5	137.1	134.7	127.2	122.4	121.8	121.8
Guinea fowl	275	101.8	111.7	124.6	123.6	138.0	141.9	149.7	137.5	127.9	122.7
Rabbit	546	86.3	93.9	104.5	113.0	119.2	118.8	124.1	117.6	111.7	113.9
Other animal products	17 724	62.8	68.9	75.7	83.4	87.9	90.7	92.2	94.6	95.3	99.9
Milk	15 818	60.3	65.9	74.4	80.9	84.1	88.0	90.7	91.9	94.2	98.6
Cow's milk	15 075	60.1	65.7	74.1	80.6	83.8	87.7	90.4	91.6	93.9	98.3
Ewe's milk	410										
Eggs	1 657	91.7	103.0	92.1	113.7	132.3	122.7	110.5	126.8	109.7	116.1
Fruit and vegetables	11 080	57.2	68.4	70.7	82.9	86.3	95.0	92.6	91.6	87.9	87.9
Vegetable	6 141	56.0	69.3	70.4	85.0	89.0	103.9	91.0	103.0	87.4	86.9
Carrot	282	70.6	94.0	78.8	114.9	98.1	114.4	102.7	102.9	105.5	90.9
Cauliflower	244	79.0	97.9	96.4	101.0	112.1	183.5	114.7	170.1	99.3	110.8
Endive	433	90.9	130.1	122.7	144.3	171.2	176.4	103.1	122.1	123.8	127.5
Melon	477	76.8	64.4	62.2	90.8	111.2	95.6	88.6	99.8	93.9	89.5
Leek	283	59.0	70.2	71.0	95.5	85.0	129.0	97.8	104.1	84.0	79.4
Tomato	1 100	60.2	63.2	58.0	82.1	87.6	77.1	90.7	90.4	85.1	87.2
Salad	996	51.4	69.0	74.2	88.2	91.4	104.7	88.3	106.3	95.2	83.3
Lettuce	573	51.1	65.6	80.6	90.3	84.8	87.7	90.2	101.3	84.4	85.4
Fruit	4 939	57.4	66.2	75.4	78.9	81.6	83.4	92.6	77.1	86.6	87.4
Strawberry	479	43.7	47.6	58.9	62.2	69.2	67.2	65.5	62.8	70.0	68.8
Peach	864	62.6	64.6	94.4	80.0	84.8	80.9	98.7	80.6	97.3	81.5
Pear	317	42.6	53.3	56.9	57.6	58.9	68.6	91.7	73.0	84.4	90.0
Apple	1 631	70.7	90.6	103.0	110.7	109.4	112.8	115.0	90.6	97.9	102.7

Source : INSEE and SCEES for fruit and vegetables

Index of farm-gate prices of agricultural products

base year 2000 retropolated

Name of item	Weight	1990	1991	1992	1993	1994	1995	1996	1997	1998	1999
General index	100 000	112.6	113.1	105.7	99.9	99.9	101.9	101.7	102.0	101.6	98.6
General index except fruit and	88 920	114.0	112.3	107.2	101.1	100.9	102.7	101.7	102.3	101.3	98.3
Plant products	42 994	121.4	121.9	109.4	99.9	100.3	105.7	104.3	103.2	104.4	102.2
Cereals	13 765	153.6	161.4	150.2	137.4	119.6	120.8	118.8	111.9	99.4	99.2
Barley	2 287	138.0	148.6	137.9	127.0	115.8	117.7	113.0	105.0	94.5	96.8
Milling barley	1 848	130.9	143.8	132.5	122.0	111.5	111.9	109.6	105.9	95.2	97.7
Brewing barley	439	175.5	173.7	166.7	153.5	138.3	148.2	130.9	100.4	90.9	92.4
Soft wheat	7 383	155.1	160.0	155.3	141.7	123.3	121.8	120.5	116.4	101.3	100.1
Maize	3 214	152.6	172.7	139.9	128.0	109.8	118.7	116.5	101.5	95.6	97.6
Potatoes	2 074	96.3	98.0	70.6	69.2	115.7	136.2	101.0	100.2	121.5	129.3
Potatoes for storage	1 810	94.1	88.9	66.4	60.4	113.8	139.9	103.0	100.3	124.0	136.4
Potatoes for processing	332	81.8	79.4	70.6	58.8	73.5	101.9	99.0	97.1	101.5	111.2
Unprocessed potatoes for storage	1 478	104.2	99.5	68.9	64.0	127.7	156.0	104.5	101.2	134.2	148.1
Firm-fleshed varieties	1 000	79.0	81.5	71.6	70.2	113.7	124.9	103.4	104.2	113.2	121.5
Normal-fleshed varieties	478	168.2	151.9	83.8	72.6	182.4	242.3	107.5	92.9	192.5	222.1
Potatoes for potato flour	113	102.2	102.2	99.2	100.8	101.9	102.1	102.1	103.3	103.3	101.3
Early potatoes	152	100.2	140.8	65.5	86.5	134.8	142.3	78.1	94.5	119.1	92.8
Wine	16 578	97.6	96.2	87.2	77.1	85.4	95.1	95.5	97.3	107.5	105.6
Quality wine	13 968	98.3	96.0	83.8	73.3	82.3	93.7	93.8	96.7	108.4	104.6
Champagne	2 534	125.9	126.3	90.6	81.0	83.6	87.2	90.8	90.8	95.4	97.2
Other wine	2 610	96.2	98.2	101.7	93.2	98.7	102.1	103.9	99.9	103.6	110.5
Ordinary wine (VCC)	2 048	95.0	93.7	94.4	85.1	92.4	98.0	99.9	96.3	101.5	110.4
Local wine	1 192	88.7	90.9	90.9	77.3	84.9	92.9	97.1	96.4	101.1	111.1
Table wine	855	100.1	97.2	98.1	90.7	98.0	102.6	102.4	96.3	102.0	109.8
Wine for Cognac	402	105.4	115.7	126.3	119.1	120.4	118.7	120.4	114.6	111.9	110.7
Oilseeds	1 800	205.9	173.6	88.5	108.1	113.7	107.9	110.6	113.7	118.4	93.4
Rape	1 210	187.1	166.4	88.8	104.0	118.0	104.6	116.4	116.5	120.7	89.4
Sunflower	508	228.4	183.2	90.8	114.7	116.7	115.4	104.5	110.8	120.3	100.7
Horticultural commodities	3 383	103.4	103.3	101.6	102.8	101.4	103.2	102.8	103.0	100.8	99.8
Cut flowers	657	132.3	129.6	113.0	116.2	109.4	113.9	113.3	112.1	106.9	100.6
Container-grown plants	1 106	93.0	91.8	90.5	89.9	91.5	92.9	91.7	93.6	93.3	98.8
Bedding plants	411	97.7	96.9	97.9	97.1	91.8	94.8	98.1	99.3	99.1	100.7
Nursery stock	1 209	84.5	87.3	92.8	95.2	95.9	95.7	95.0	96.0	96.5	99.1
Other plant products	5 394	118.8	123.1	121.8	101.8	101.5	101.6	103.9	102.8	95.1	93.0
Seeds and plants	1 539	147.4	133.0	127.1	114.1	115.3	121.5	116.3	113.5	120.7	133.7
Beet	2 347	92.8	99.8	91.7	94.8	100.5	100.1	99.4	96.4	94.7	90.4
Protein peas	503	191.9	194.3	214.5	121.0	100.4	100.7	116.4	116.8	85.9	85.5
Animals and animal products	45 926	108.0	104.4	105.4	102.1	101.6	100.3	99.6	101.5	98.9	95.1
Livestock	20 974	111.6	105.9	108.3	102.0	103.1	100.9	97.9	101.9	97.4	94.0
Large cattle	10 587	115.8	105.1	108.5	112.4	113.1	103.8	91.2	96.6	102.6	99.8
Lean cattle	1 406	106.9	102.5	103.7	105.1	107.1	97.1	78.8	88.4	98.4	97.4
Beef cattle	9 182	117.3	105.6	109.4	113.7	114.1	105.0	93.4	98.1	103.3	100.2
Young cattle	2 915	119.5	115.5	113.9	113.6	113.3	104.5	94.1	97.5	102.1	99.5
Cows	4 024	116.7	101.9	109.8	116.0	115.4	105.0	92.3	98.7	104.7	100.6
Calves	2 654	96.5	90.2	93.8	96.9	96.5	96.3	86.3	91.7	98.8	98.3
Veal calves	2 278	95.9	89.8	92.9	94.9	94.0	96.3	88.0	92.5	97.6	97.5
Eight-day-old calves	376	99.9	92.3	99.4	109.3	112.3	95.6	73.7	85.9	107.2	104.3
Pigs	6 200	119.7	120.1	121.7	89.7	91.8	101.3	116.2	116.4	87.7	81.8
Sheep	1 273	83.0	87.8	85.3	82.8	86.2	83.3	94.9	102.2	93.2	89.1
Horse	260	128.7	124.9	123.2	124.2	123.0	114.1	113.5	111.8	101.6	99.7
Other animals	7 228	120.2	119.1	115.7	109.3	106.3	104.8	106.4	108.5	105.2	96.7
Poultry	6 258	120.2	118.3	116.1	111.1	108.2	105.3	107.0	109.3	105.6	97.0
Turkey hens and cocks	1 725	118.0	116.7	114.9	107.3	106.2	104.0	106.3	110.2	106.5	95.8
Duck for roasting	502	117.1	117.5	116.1	111.2	108.6	107.0	107.9	109.1	105.4	98.4
Fattened duck	1 001	142.0	129.7	127.3	131.0	119.1	113.7	112.9	107.0	106.6	99.4
Chicken	2 667	118.2	117.4	115.0	110.0	107.5	104.5	106.5	109.4	105.1	96.9
Label chicken	848	115.4	114.6	112.1	108.0	104.6	100.7	102.0	104.3	102.2	98.0
Standard chicken	1 336	118.8	118.0	115.5	110.3	108.0	105.8	108.1	111.3	106.4	96.5
Guineafowl	275	119.2	117.2	113.2	108.9	105.9	103.7	104.5	105.1	104.1	98.9
Rabbit	546	117.8	120.7	111.3	98.1	94.9	100.2	100.0	101.1	101.8	93.5
Other animal products	17 724	99.7	97.8	98.6	99.6	98.2	97.9	99.3	98.5	98.4	96.0
Milk	15 818	98.7	96.4	98.0	99.2	98.9	99.0	98.6	98.3	99.5	97.6
Cow's milk	15 075	98.3	96.1	97.7	99.0	98.7	98.8	98.6	98.3	99.6	97.6
Ewe's milk	410	112.7	113.0	107.7	108.4	107.2	106.9	98.7	96.7	97.9	98.8
Eggs	1 657	113.4	114.9	107.7	106.0	92.2	87.3	105.3	100.1	87.9	81.0
Fruit and vegetables	11 080	101.0	121.1	93.4	90.5	91.2	95.6	101.6	100.3	103.8	101.2
Vegetable	6 141	94.4	104.8	87.6	93.0	91.2	93.2	101.9	100.0	97.2	99.5
Carrot	282	111.1	118.1	84.3	111.1	98.2	98.1	123.0	92.2	107.3	122.5
Cauliflower	244	105.5	148.5	87.6	129.8	101.3	123.7	110.3	104.0	82.3	107.5
Endive	433	126.6	115.4	87.8	104.2	87.8	93.7	121.2	107.8	106.0	139.9
Melon	477	91.6	101.8	106.9	84.7	86.7	93.2	86.8	117.7	83.3	92.4
Leek	283	100.2	129.6	90.5	99.4	98.3	92.6	118.9	118.7	114.7	114.1
Tomato	1 100	82.8	95.0	77.0	73.3	85.9	73.0	89.7	79.3	78.7	77.6
Salad	996	103.7	115.0	97.2	111.1	94.1	97.3	115.9	107.5	104.8	109.5
Lettuce	573	103.7	111.2	91.9	108.7	94.7	96.0	117.6	103.9	98.3	109.9
Fruit	4 939	106.3	145.1	89.9	88.6	92.6	98.1	95.5	98.3	115.2	96.8
Strawberry	479	78.0	97.2	82.8	83.5	83.0	81.4	84.5	81.4	90.6	91.8
Peach	864	105.9	143.4	85.5	106.9	98.6	104.3	106.4	108.8	141.9	91.2
Pear	317	112.6	149.0	70.7	82.1	78.0	79.7	82.1	91.4	111.7	87.6
Apple	1 631	132.4	201.0	118.6	86.8	113.1	106.6	112.4	107.0	107.5	112.1

Source : INSEE and SCEES for fruit and vegetables

Index of farm-gate prices of agricultural products base year 2000 retropolated

Name of item	Weight	2000	2001	2002	2003	2004	2005
General index	100 000	100.0	103.5	99.9	103.6	101.9	97.2
General index except fruit and	88 920	100.0	102.0	98.4	100.7	100.8	95.3
Plant products	42 994	100.0	101.8	98.6	103.1	103.2	91.6
Cereals	13 765	100.0	99.9	92.5	100.9	103.6	87.8
Barley	2 287	100.0	95.9	85.1	92.8	92.8	83.5
Milling barley	1 848	100.0	95.0	83.9	93.2	95.1	84.7
Brewing barley	439	100.0	99.6	90.0	91.0	83.2	78.3
Soft wheat	7 383	100.0	101.0	93.1	102.8	106.6	87.2
Maize	3 214	100.0	96.9	91.1	98.7	101.9	88.2
Potatoes	2 074	100.0	113.5	107.0	110.2	110.4	97.6
Potatoes for storage	1 810	100.0	117.6	110.5	113.7	112.5	99.3
Potatoes for processing	332	100.0	102.9	95.9	87.7	84.2	84.6
Unprocessed potatoes for storage	1 478	100.0	120.9	113.8	119.5	118.9	102.7
Firm-fleshed varieties	1 000	100.0	104.9	96.3	99.2	99.6	92.4
Normal-fleshed varieties	478	100.0	154.3	150.2	161.9	159.3	124.1
Potatoes for potato flour	113	100.0	98.6	104.0	102.5	101.2	98.7
Early potatoes	152	100.0	75.8	67.6	75.0	91.9	75.4
Wine	16 578	100.0	98.0	99.3	101.8	101.9	89.5
Quality wine	13 968	100.0	99.6	100.4	100.7	100.7	89.1
Champagne	2 534	100.0	101.2	103.4	107.6	114.7	117.2
Other wine	2 610	100.0	89.6	93.4	107.5	108.4	91.2
Ordinary wine (VCC)	2 048	100.0	88.8	91.7	110.4	112.7	91.5
Local wine	1 192	100.0	88.9	90.7	107.0	107.5	90.9
Table wine	855	100.0	88.7	93.1	115.1	119.8	92.3
Wine for Cognac	402	100.0	93.7	102.1	92.8	86.9	89.6
Oilseeds	1 800	100.0	123.8	128.2	121.7	109.7	106.3
Rape	1 210	100.0	122.5	124.7	124.3	108.2	104.3
Sunflower	508	100.0	131.4	140.4	116.8	116.0	112.9
Horticultural commodities	3 383	100.0	101.8	105.5	106.4	109.9	106.6
Cut flowers	657	100.0	103.0	102.4	108.4	108.9	117.5
Container-grown plants	1 106	100.0	97.8	102.9	97.0	98.6	87.2
Bedding plants	411	100.0	99.5	97.3	98.8	108.0	87.0
Nursery stock	1 209	100.0	105.8	112.4	116.8	121.6	125.8
Other plant products	5 394	100.0	106.3	94.9	101.3	96.7	91.0
Seeds and plants	1 539	100.0	105.2	101.4	104.9	100.8	96.2
Beet	2 347	100.0	105.6	87.1	98.1	93.7	87.6
Protein peas	503	100.0	111.3	101.9	103.3	96.6	88.7
Animals and animal products	45 926	100.0	102.3	98.2	98.6	98.5	98.8
Livestock	20 974	100.0	99.5	93.9	95.1	100.0	103.8
Large cattle	10 587	100.0	85.6	90.8	94.8	100.0	107.7
Lean cattle	1 406	100.0	78.4	98.8	106.3	104.8	110.5
Beef cattle	9 182	100.0	86.7	89.5	93.1	99.2	107.3
Young cattle	2 915	100.0	82.7	97.5	98.1	97.7	105.9
Cows	4 024	100.0	85.8	85.7	90.9	100.9	109.5
Calves	2 654	100.0	95.6	95.2	101.9	107.0	98.3
Veal calves	2 278	100.0	98.6	96.4	101.7	107.5	97.3
Eight-day-old calves	376	100.0	77.2	88.0	103.4	104.0	104.4
Pigs	6 200	100.0	118.3	93.1	88.1	94.1	96.8
Sheep	1 273	100.0	125.7	115.8	113.5	114.5	115.1
Horse	260	100.0	127.1	123.0	110.4	101.1	107.5
Other animals	7 228	100.0	107.7	104.4	101.7	104.8	100.4
Poultry	6 258	100.0	107.6	105.1	101.6	105.1	100.3
Turkey hens and cocks	1 725	100.0	113.5	110.1	104.8	110.1	104.5
Duck for roasting	502	100.0	106.0	106.7	103.3	105.5	102.0
Fattened duck	1 001	100.0	100.1	98.9	94.3	96.0	94.3
Chicken	2 667	100.0	107.1	103.9	102.0	105.1	99.5
Label chicken	848	100.0	105.0	103.7	100.5	105.6	100.5
Standard chicken	1 336	100.0	108.0	104.0	102.5	104.8	98.8
Guineafowl	275	100.0	105.8	104.9	101.8	105.7	101.1
Rabbit	546	100.0	109.1	97.0	102.2	102.0	100.6
Other animal products	17 724	100.0	103.4	100.7	101.5	94.2	92.3
Milk	15 818	100.0	104.0	101.5	99.9	95.6	93.6
Cow's milk	15 075	100.0	104.1	101.6	99.9	95.5	93.5
Ewe's milk	410	100.0	99.4	98.0	97.7	97.5	97.6
Eggs	1 657	100.0	98.2	92.8	116.6	81.5	79.7
Fruit and vegetables	11 080	100.0	115.2	112.1	126.6	110.5	112.0
Vegetable	6 141	100.0	113.3	110.1	120.4	99.5	112.4
Carrot	282	100.0	139.3	108.9	129.9	104.5	125.9
Cauliflower	244	100.0	124.3	120.8	137.2	94.4	151.5
Endive	433	100.0	118.3	112.4	79.6	88.8	81.6
Melon	477	100.0	107.1	117.3	127.4	101.4	101.5
Leek	283	100.0	140.8	99.3	118.2	92.2	104.8
Tomato	1 100	100.0	81.1	100.1	100.6	71.7	93.1
Salad	996	100.0	124.8	113.8	143.4	112.2	135.7
Lettuce	573	100.0	131.7	112.8	145.6	110.5	132.8
Fruit	4 939	100.0	118.2	115.3	136.3	127.7	111.4
Strawberry	479	100.0	111.4	120.3	126.3	115.7	115.7
Peach	864	100.0	132.8	96.2	159.7	119.2	104.4
Pear	317	100.0	103.1	109.7	114.1	109.5	96.6
Apple	1 631	100.0	116.5	132.0	128.2	142.5	125.6

Source : INSEE and SCEES for fruit and vegetables

Informations Rapides

CPPAP 0108 B 06336
ISSN 0151-1475

25 January 2005 - n°28
©INSEE 2005

■ Agricultural price index – december 2005

Subject «Prices»

Agricultural prices increased in December (+1.8%, with seasonally adjusted data). As a result, the decrease in relation to December 2004 has been reduced (-0.4% annual variation). The year 2005 will have been marked by a noticeable drop in comparison with 2004, on average, and is clearly below the five-yearly average, particularly in terms of plant production.

Cereal prices are again falling (-1.5% compared to November) against the background of a surplus in the world results. However, they are still 5.0% higher than those of December 2004, mainly maize prices.

Wine prices continue to recover (+1.4% compared to November) after two years of decline. As an annual average, the prices in 2005 were lower by -12.2% than 2004 prices, including -11.5% for appellation wines.

The leap in the price of vegetables (+19.8% annual variation) is mainly due to the dynamism in the demand for cauliflower (+40.1%), endive (+10.2%) and salad (+13.2%). The reduction in fruit prices (-8.9% annual variation) primarily concerns apples (-16.2%), which are exporting poorly, whilst clementines (+25.3%) are benefiting from a buoyant market.

As a result of declining supply in Europe, the prices of large cattle are still rising (+1.4% over the month; +1.6% over the year). The price of calves continues to rise (+4.1% over the month; +4.2% annual

variation) against a background of sustained demand. Egg prices are falling (-1.3%) bringing the annual variation back to +16.4%.

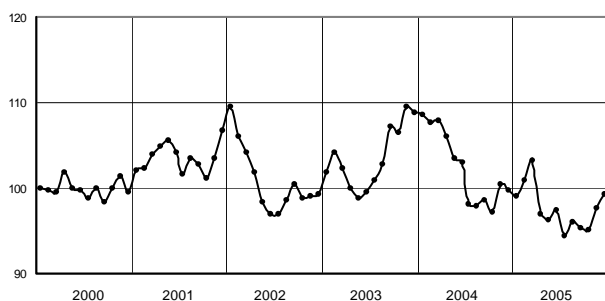
Food prices continued to increase in December (+1.9%) and settled down at 7.3% above the level achieved in December 2004.

Vegetable prices are 17.1% higher than those in December 2004. The highest rises were recorded for cucumber, cauliflower and courgettes. As regards fruit, kiwi fruit, lemons, bananas and apples are below December 2004 levels whilst pears and oranges are increasing. Meat products - principally veal, beef and poultry - stabilised at 7.2% higher than December 2004. Seafood prices continue to rise (+9.1% over the month; +23.7% over the year).

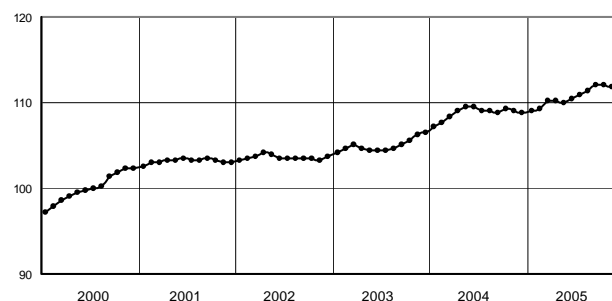
The purchase prices of the means of agricultural production rose in December (+0.2%) and are 3.0% above the level in December 2004.

For the third consecutive month, energy prices have fallen (-0.8% over the month), particularly diesel (-2.9%) and petrol (-2.2%); however, they are 18.2% higher than they were in December 2004 (see note on repayment of TIPP [*domestic tax on oil products*] below the table on page 4). The prices of fertiliser and supplements continue to increase, particularly nitrate fertilisers (+1.2% over the month; +7.2% over the year). Finally there is an increase in the item Farming equipment and machinery (+0.9%; +4.5% over the year).

Index of farm-gate of agricultural products
base 100 in 2000 - seasonally adjusted date



Index of purchase prices of the means of agricultural production
base 100 in 2000 - raw data



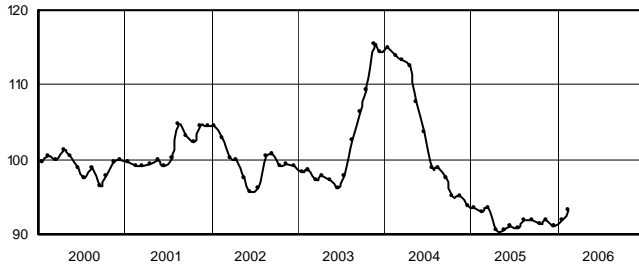
Institut National de la Statistique et des Études Économiques - Direction Générale 18, bd A. Poincaré 75675 Paris Cedex 14
Directeur de la publication : Jean-Michel CHARPIN.
Adresse Internet : <http://www.insee.fr>
Abonnements : INSEE INFO SERVICE Service abonnements BP 409 75560 Paris cedex 12

Index of farm-gate prices of agricultural products

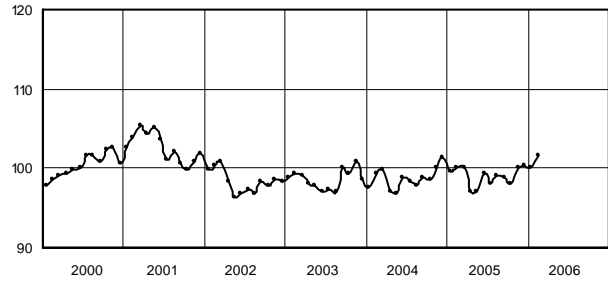
Base 100 in 2000- seasonally adjusted data for sets having a seasonal aspect (see methodology)

The scale of the first five graphs is larger than that of the following, in order to allow comparisons in spite of the variability of the price profiles

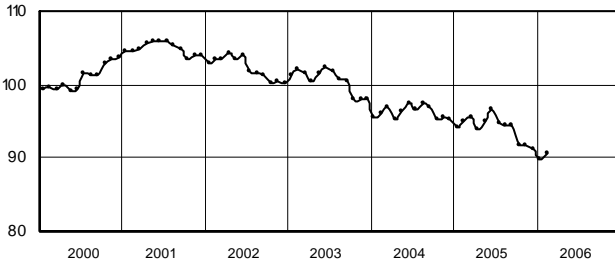
Plant products (except fruits and vegetables)



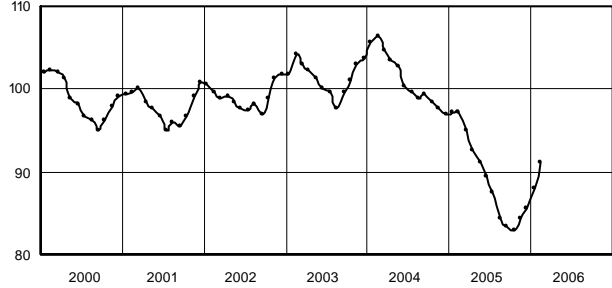
Animal products



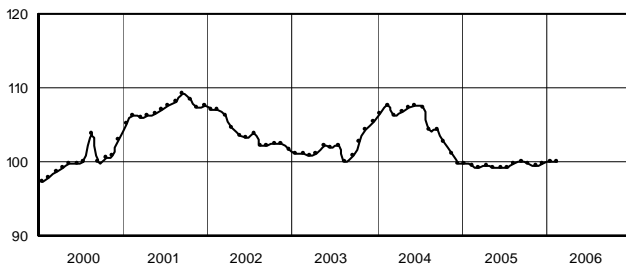
Cow's milk



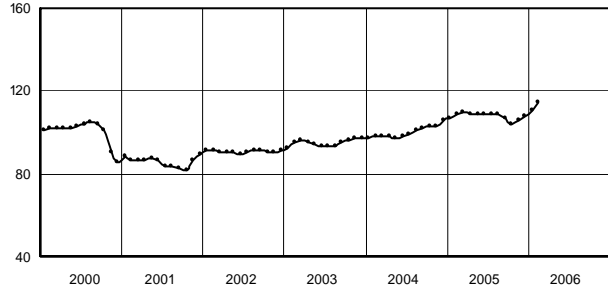
Wine



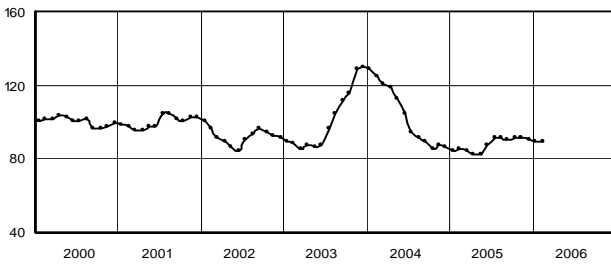
Chickens



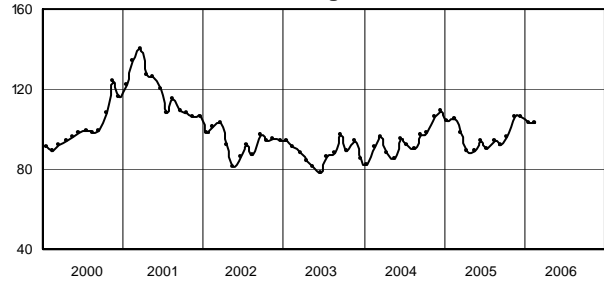
Large cattle



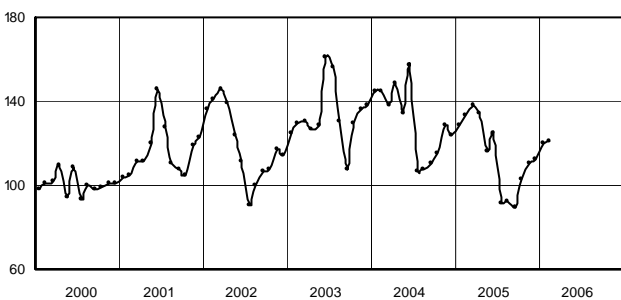
Cereals



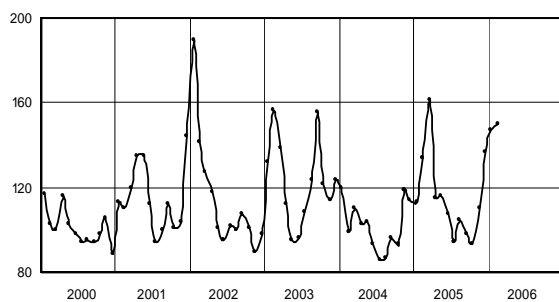
Pigs



Fruits



Vegetables



Index of farm-gate of agricultural products (IPPAP)

Base 100 in 2000

	Weights	Raw data						Seasonally adjusted data (4)			
		Indices					Var as % over a year	Indices			Var as % over a month
		Annual average		Oct 2005	Nov 2006	Dec 2005		Oct 2005	Nov 2006	Dec 2005	
		2004	2005								
General index	100 000	101,9	97,2	96,1	98,1	100,1	-0,4	95,0	97,7	99,4	+1,7
except fruits and vegetables	88 920	100,8	95,3	95,9	96,5	96,7	-1,7	94,8	96,1	95,9	-0,2
Plant products (1)	42 994	103,2	91,6	91,0	91,8	92,1	-2,9	91,2	91,8	91,0	-0,9
Cereals	13 765	103,6	87,8	91,9	91,6	90,2	+4,9	91,9	91,6	90,2	-1,5
<i>of which soft wheat</i>	7 383	106,6	87,2	90,7	90,4	88,9	+2,2	90,7	90,4	88,9	-1,7
<i>milling barley</i>	1 848	95,1	84,7	86,2	85,7	84,3	-0,7	86,2	85,7	84,3	-1,6
<i>maize</i>	3 214	101,9	88,2	94,5	93,9	92,9	+13,3	94,5	93,9	92,9	-1,1
Potatoes	2 074	110,4	97,6	112,1	114,5	113,7	+23,6	112,1	114,5	113,7	-0,7
Wine	16 578	101,9	89,5	82,9	84,5	85,6	-11,7	82,9	84,5	85,6	+1,3
appellation	13 968	100,7	89,1	82,1	83,8	84,9	-12	82,1	83,8	84,9	+1,3
other wine	2 610	108,4	91,2	87,2	87,9	89,3	-10,2	87,2	87,9	89,3	+1,6
Horticultural commodities	3 383	109,9	106,6	102,2	106,1	111,5	-5,7	<i>104,2</i>	<i>106,2</i>	<i>97,4</i>	<i>-8,3</i>
Oilseeds	1 800	109,7	106,2	110,6	109,1	108,0	-0,7	110,6	109,1	107,1	-1,8
Other plant products	5 394	96,7	91,0	92,4	91,3	91,2	-2,4	92,4	91,3	91,2	-0,1
<i>proteaginaceous products</i>	503	96,6	88,7	91,6	90,5	89,1	+8,9	91,6	90,5	89,1	-1,5
Fruits and vegetables	11 080	110,5	112,0	96,9	110,3	127,4	+8,1	96,9	110,3	127,4	+15,5
Vegetables (2)	6 141	99,5	112,4	93,7	110,4	136,9	+19,8	93,7	110,4	136,9	+24,0
Fruits (2)	4 939	127,7	111,4	103,2	110,1	112,4	-8,9	103,2	110,1	112,4	+2,1
Animal products	45 926	98,5	98,8	100,5	101,0	101,1	-0,6	98,2	100,1	100,5	+0,4
Livestock	20 974	100,0	103,8	102,1	103,6	104,3	+0,6	<i>102,3</i>	<i>106,8</i>	<i>107,9</i>	+1,0
<i>of which large cattle</i>	10 587	100,0	107,7	104,5	105,0	104,1	+1,6	<i>104,0</i>	<i>106,2</i>	<i>107,7</i>	+1,4
<i>calves</i>	2 654	107,0	98,3	102,8	107,4	112,1	+4,2	<i>101,7</i>	<i>103,8</i>	<i>108,1</i>	+4,1
<i>pigs</i>	6 200	94,1	96,8	95,0	95,4	97,1	-2,7	<i>96,4</i>	<i>105,6</i>	<i>105,6</i>	0,0
<i>sheep</i>	1 273	114,5	115,1	114,2	122,4	125,0	+0,5	<i>117,7</i>	<i>122,6</i>	<i>119,2</i>	-2,8
Poultry	6 258	105,1	100,4	100,1	100,1	100,5	-1,4	<i>100,4</i>	<i>100,3</i>	<i>100,8</i>	+0,5
<i>of which chickens</i>	2 667	105,1	99,5	99,6	99,6	99,5	-0,4	<i>99,6</i>	<i>99,6</i>	<i>99,6</i>	+0,0
<i>turkey hens and cooks</i>	1 725	110,1	104,5	105,4	103,9	105,4	-1,4	<i>104,9</i>	<i>104,6</i>	<i>103,7</i>	-0,9
Rabbit	546	102,0	100,6	108,5	112,2	107,2	+2,2	<i>98,9</i>	<i>102,5</i>	<i>105,6</i>	+3,1
Milk	15 818	95,6	93,6	98,6	97,8	96,8	-3,6	<i>91,9</i>	<i>92,0</i>	<i>91,3</i>	-0,7
<i>of which cow's milk (3)</i>	15 075	95,5	93,5	98,6	97,8	96,8	-3,7	<i>91,8</i>	<i>91,8</i>	<i>91,2</i>	-0,7
Eggs	1 657	81,5	79,7	98,9	98,7	100,8	+16,4	<i>96,8</i>	<i>91,9</i>	<i>90,7</i>	-1,3

Source : INSEE - SCEES

- (1) Except fruits and vegetables (2) The weightings for fruits and vegetables change every month. The value here are annual
 (3) Estimates for the current month (4) The figure in italics represent products of a seasonally nature. For the others, the seasonally adjusted data are identical to the raw data.

Index of wholesale food prices (IPGA)

Base 100 in 2000

	Weights	Raw data					variation	
		Indices					as % on	
		Annual averages		Oct 2005	Nov 2005	Dec 2005	a month	a year
2004	2005							
General index	1000	109,0	112,3	109,1	113,7	116,0	+2,0	+7,5
Fruits (1)	199	118,3	121,7	110,7	124,6	119,9	-3,7	+1,9
on which apples	21	144,6	124,2	112,3	114,7	117,0	+2,0	-3,8
strawberries	20	99,3	121,6	104,6	212,4	306,1	+44,1	+50,3
exotic fruits	90	119,3	127,8	116,3	123,8	112,8	-8,9	-0,5
Vegetables (1)	156	112,4	123,5	115,1	115,6	136,3	+17,9	+17,9
of which lettuce	10	106,6	132,2	86,3	123,3	158,5	+28,6	+10,6
tomatoes	32	98,8	125,3	116,3	101,2	130,3	+28,7	+1,7
potatoes	16	130,8	136,2	154,3	158,9	158,0	-0,6	+27,3
Meat	347	104,5	106,1	106,1	110,3	107,6	-2,5	+4,4
of which beef	83	95,0	105,6	107,1	109,8	102,9	-6,3	+9,4
veal	44	119,2	111,3	113,4	126,9	135,7	+6,9	+19,0
pork	67	91,7	92,5	90,1	92,4	89,4	-3,3	+3,5
mutton	47	109,2	111,2	103,9	110,8	111,6	+0,7	+3,2
poultry	71	100,0	98,1	101,4	98,6	89,6	-9,2	-9,1
Seafood	134	109,5	114,0	112,8	117,8	128,7	+9,3	+25,8
Eggs and dairy products	165	103,4	102,2	104,9	103,3	101,3	-1,9	-1,0
of which eggs	35	87,4	84,0	105,6	97,2	87,8	-9,6	+6,5
butter	14	94,8	94,2	94,2	94,2	94,2	-	-
cheese	64	110,2	108,7	106,5	106,3	105,8	-0,4	-4,1

Source : INSEE-SNM - Prices obtained from the wholesale market at Rungis

- (1) The weightings for fruits and vegetables change every month. The values here are annual.

Index of purchase prices of the means of agricultural production (IPAMPA)

Base 100 in 2000

	Weights	Annual average		July	Aug	Sept	Oct	Nov	Dec	variation as % over		
		2004	2005	2005	2005	2005	2005	2005	2005	2005	1 month	3 months
General index	1000	108,8	110,8	111,0	111,4	112,1	112,1	111,8	112,0	+0,1	-0,1	+2,9
Goods of current consumer	751	107,9	109,5	109,8	110,2	111,0	111,0	110,6	110,7	+0,1	-0,2	+3,2
Energy (1)	77	100,4	117,9	120,1	123,4	130,3	130,2	124,8	123,8	-0,8	-5,0	+18,3
Seeds	47	107,2	104,8	104,6	104,6	104,7	104,7	104,6	104,3	-0,3	-0,4	-3,1
Fertilisers and supplements	81	112,4	120,0	118,7	119,1	120,0	121,3	122,2	123,1	+0,8	+2,6	+5,8
<i>of which nitrate fertiliser</i>	30	116,7	128,1	125,1	125,4	127,1	130,2	131,6	133,5	+1,4	+5,0	+8,1
<i>phosphate fertiliser</i>	3	104,8	107,6	107,4	107,6	106,9	107,1	107,6	107,6	+0,0	+0,7	+0,1
<i>potassium fertiliser</i>	4	111,6	119,2	119,3	120,6	121,5	122,4	123,0	123,3	+0,2	+1,4	+8,1
<i>compound fertiliser</i>	37	110,5	116,4	115,9	116,2	116,8	117,2	117,7	118,2	+0,4	+1,2	+4,3
Crop protection products	81	102,6	103,1	103,6	103,6	103,6	103,6	103,2	102,9	-0,3	-0,7	+0,5
<i>of which herbicides</i>	31	103,0	103,4	103,6	103,4	103,5	103,6	103,3	103,1	-0,2	-0,3	+0,4
<i>fungicides</i>	31	102,5	103,2	104,2	104,2	104,1	104,0	103,4	102,9	-0,6	-1,2	+0,7
<i>insecticides and acaricides</i>	8	98,9	98,7	98,7	99,0	99,1	98,9	98,9	98,6	-0,3	-0,5	0,0
Animal feed	205	108,9	101,9	101,6	101,6	101,5	101,4	101,7	102,0	+0,2	+0,5	-0,8
<i>of which feed for calves</i>	17	105,9	107,2	106,6	108,0	108,1	108,9	109,0	109,0	+0,0	+0,8	+2,0
<i>feed for large cattle</i>	35	108,8	102,3	101,7	101,7	101,4	101,3	101,7	102,0	+0,3	+0,6	-2,0
<i>feed for pigs</i>	55	106,5	97,3	97,1	96,8	96,7	96,5	96,7	97,0	+0,3	+0,4	-1,4
<i>poultry feed</i>	59	108,0	100,1	99,8	99,8	99,7	99,6	100,0	100,2	+0,2	+0,5	-0,8
Veterinary products and services	31	107,9	109,9	110,4	110,4	110,5	110,5	110,7	111,0	+0,3	+0,5	+2,9
Small equipment and tools	13	104,8	113,5	114,3	114,6	114,3	114,1	114,3	114,3	+0,0	+0,0	+6,2
Maintenance and repair of equipment	70	117,4	122,2	122,5	122,7	122,9	123,0	123,1	123,4	+0,2	+0,4	+3,7
Maintenance and repair of buildings	15	105,3	107,1	107,6	107,6	107,6	107,3	107,3	107,3	0,0	-0,3	+2,0
General expense	131	106,8	108,8	109,4	109,7	109,4	108,9	108,8	109,1	+0,3	-0,2	+2,0
Investments	249	111,5	114,8	114,9	115,1	115,5	115,6	115,6	115,9	+0,2	+0,4	+2,2
Equipment	164	109,8	113,5	113,7	113,8	114,2	114,2	114,2	114,5	+0,3	+0,3	+2,2
<i>of which tractors</i>	54	107,4	109,6	109,7	109,7	109,9	109,7	109,9	109,9	0,0	0,0	+1,5
<i>cultivation equipment and machines</i>	38	110,9	117,4	117,5	117,9	118,3	118,6	118,2	119,2	+0,9	+0,8	+4,5
<i>harvesting equipment and machinery</i>	41	107,5	111,9	112,4	112,4	113,1	113,1	113,1	113,7	+0,5	+0,5	+3,2
<i>farm equipment and tools</i>	21	118,4	119,6	119,5	119,5	119,7	119,6	119,9	119,5	-0,4	-0,2	-1,4
Buildings	85	114,8	117,3	117,3	117,5	118,0	118,3	118,3	118,5	+0,2	+0,5	+2,2

The right-hand columns show variations in relation to the previous month, in months m-3 and m-12

Source : INSEE-SCEES

(1) The repayment of 4 cents per litre of fuel of the domestic tax on oil products (TIPP) benefiting farmers

has been deducted in the index for the second half of 2004 and the year 2005 to comply national audit regulations.

The index of farm-gate prices of agricultural products (IPPAP) measures changes in the price of products supplied by farmers to non-farmers. It is calculated using information sent by about forty administrative and professional bodies. It is based in particular on the surveys and records drawn up by the market news service (SNM) and the central service of surveys and statistical studies (SCEES) of the Ministry responsible for agriculture. Since January 2004, it has been calculated in base and reference 100 in 2000. The weighting coefficients come from the national agricultural audit for 2000. In the fruit, vegetables, potatoes and cut flowers sectors, they change each month to take into account the very marked seasonal aspect and the absence of different species for part of the year. The monthly coefficients correspond to the calendar of consignments in the base year and stay the same from one year to the next. Sets have been available in this new base since January 2000. The methodology is described in "The measurement of agricultural price movements – INSEE results no.429 – Production system no.92 November 1995" and in "Agreste – Figures and Data – Agriculture – no.132 – March 2001" for fruit and vegetables.

The IPPAP is published towards the end of the month following the month in question. It is provisional and becomes final the following month. Calculation of the seasonally adjusted sets was restructured at the time of the comparative indices in January 2002. Regarding indices where there is no obvious seasonal aspect, the seasonally adjusted indices are identical to the raw indices.

Using the index of the purchase prices of the means of agricultural production (IPAMPA), changes in the prices of goods and services used by farmers in their work can be followed. It is calculated based on the results of a survey carried out by the SCEES in the sectors of fertilisers, animal feed, plant-care products, seeds, veterinary expenditure and small equipment, and on various indicators (manufacturing retail price indices or consumer price indices) for other goods and services. Since January 2004, it has been calculated as base and reference 100 in 2000. Sets have been available in this new base since January 2000. The IPAMPA methodology is also described in INSEE methods no.94 published in January 2000. The IPAMPA is provisional for a period of six months.

The index of food prices (IPGA) measures price changes at the wholesale market stage at Rungis. In this particular field, it is calculated based on prices recorded by the market news service (SNM) of the Ministry responsible for agriculture. It is calculated as reference 100 in 2000.

The three indices are published towards the end of the month following the month in question. A methodological note describing the change in base year 2000 can be found at the following address: http://www.insee.fr/fr/indicateur/indic_conj/donnees/priagri_m.pdf.

Organisations providing information

Stat institute	Institut national de la statistique et des études économiques (INSEE)	http://www.insee.fr
Ministère de l'agriculture		http://www.agriculture.gouv.fr/spip/
in which	Service central des enquêtes et études statistiques (SCEES)	http://www.agreste.agriculture.gouv.fr/
	Services des nouvelles du marché (SNM)	http://www.snm.agriculture.gouv.fr/
Cereals and oilseeds	Office des grandes cultures	http://www.onic.fr/
Proteagineous	Union nationale interprofessionnelle des plantes riches en protéines (UNIP)	http://www.prolea.com
Animals	Office de l'élevage (OFIVAL)	http://www.ofival.fr/
Wine	Office national interprofessionnel des vins (ONIVINS)	http://www.onivins.fr/
	Comité interprofessionnel des vins de Bordeaux (CIVB)	http://www.vins-bordeaux.fr/prehp.asp
	Bureau interprofessionnel des vins de Bourgogne (BIVB)	http://www.vins-bourgogne.fr/
	Conseil interprofessionnel des vins d'Alsace (CIVA)	http://www.vinsalsace.com/fr/
	Comité interprof des vins AOC des Côtes du Rhône et de la vallée du Rhône	http://www.vins-rhone.com/
	Comité interprofessionnel des vins du Sud-Ouest (CIVSO)	http://www.vins-du-sud-ouest.com/
	Conseil interprofessionnel des vins du Languedoc (CIVL)	http://www.languedoc-wines.com/
	Conseil interprofessionnel des vins du Roussillon (CIVR)	http://www.vins-du-roussillon.com/
	Interprofession des Vins du Val de Loire (InterLoire)	http://www.interloire.com/
	Comité interprofessionnel des vins de Gaillac (CIVG)	http://www.vins-gaillac.com/
	Comité interprofessionnel des vins des Côtes-de-Provence (CIVCP)	http://www.cotes-de-provence.fr/
	Conseil interprofessionnel des vins de la région de Bergerac (CIVRB)	http://www.vins-bergerac.fr/
	Comité interprofessionnel des vins de Champagne (CIVC)	http://www.champagne.fr/
	Bureau national interprofessionnel du Cognac (BNIC)	http://www.cognac.fr/
Potato plants	Féd. nat. des producteurs de plants de pommes de terre (FNPPPT)	http://www.plantdepommeeterre.org/
Pulse	Fédération nationale des légumes secs (FNLS)	www.legume-sec.com
Fodder	Syndicat national des déshydrateurs de fourrage (SNDF)	www.luzernes.org/
Seeds	Groupement national interprofessionnel des semences (GNIS)	www.gnis.fr
Flax	Comité interprofessionnel de la production agricole du lin (CIPALIN)	www.lin.asso.fr
Tobacco	Fédération nationale des planteurs de tabac (FNPT)	http://www.france-tabac.com/default.htm
Sugar beet	Confédération générale des planteurs de betteraves (CGB)	http://www.cgb-france.fr/default800.asp
Ewe's milk	Confédération générale des producteurs de lait de brebis et des industriels de Roquefort	http://www.roquefort.fr/

Other organisations

Research	Institut national de la recherche agronomique (INRA)	www.inra.fr
Wine	Institut national des appellations d'origine (INAO)	http://www.inao.gouv.fr/
Farmers	Assemblée permanente des chambres d'agriculture (APCA)	www.apca.chambagri.fr
Potatoes	Comité national interprofessionnel de la pomme de terre (CNIPT)	http://www.cnipt.com/default.asp
Fruit and végét	Office national interprofessionnel des fruits, légumes et horticulture (ONIFLHOR)	http://www.oniflhor.fr/
"	Centre technique des fruits et des légumes (CTIFL)	www.ctifl.fr
Oilseeds	Centre technique interprofessionnel des oléagineux métropolitains (CETIOM)	www.cetiom.fr
Sugar beet	Institut technique de la betterave (ITB)	www.institut-betterave.asso.fr
Pig	Institut technique du porc (ITP)	http://www.itp.asso.fr/
Sugar	Fonds d'intervention et de régularisation du marché du sucre (FIRS)	www.firs.gouv.fr
Paris market	Société d'économie mixte du marché de Rungis (Semmaris)	http://www.rungisinternational.com/
Malt	Chambre syndicale de la malterie française	
Horticulture	Comité national de l'horticulture française	
Milk	Centre national interprofessionnel de l'économie laitière (CNIEL)	http://www.maison-du-lait.com/

Bibliography

- [1] AGRESTE - Série D n°17 - avril 1979 - L'IPPAP fruits et légumes en base 1970
- [2] AGRESTE - données chiffrées n°73 - novembre 1995 - 15 ans d'indice des prix des fruits et légumes
- [3] AGRESTE - chiffres et données n°132 - mars 2001 - IPPAP fruits et légumes base 1995
- [4] AGRESTE - chiffres et données n°165 - février 2005 - IPPAP fruits et légumes base 2000
- [5] Berger Jacques - La mesure des mouvements des prix agricoles, IPPAP Présentation de la base 1990 - INSEE-résultats n°429, système productif n°92 - novembre 1995 - 168 pages
- [6] Berger Jacques, Lemarquis Danielle, Pochet Miranda, Pous Bernard - L'IPAMPA (Indice des prix d'achat des moyens de production agricole) Méthodologie - INSEE Méthode n°94 - février 2000.
- [7] Berthier Jean-Pierre - Les indices additifs - Courrier des statistiques n°104, décembre 2002
- [8] Berthier Jean-Pierre - Le chaînage des indices entre nécessité pratique et justification théorique - Courrier des statistiques n°108, décembre 2003
- [9] Berthier Jean-Pierre - Introduction à la pratique des indices statistiques. Document de travail n°M0503 - décembre 2005.
- [10] Bonnays Guy, Floch Jean-Michel - L'indice des prix des produits agricoles à la production, méthodologie et séries longues - INSEE, Archives et documents n°122 - novembre 1987, 122 pages
- [11] Bourgey Guy - L'indice des prix des produits agricoles à la production : méthodologie base 1975 - INSEE, Archives et documents n°33, octobre 1981, 88 pages
- [12] Fourastier Jean (sous la direction de) - L'évolution des prix à long terme, PUF 1969 (pp121 à 170 pour les prix agricoles et alimentaires
- [13] Laforest - Calcul d'un indice de prix agricoles pour la période 1949-1956 - INSEE, Etudes statistiques n°1 janvier-mars 1957
- [14] Roucher Jean - Evolution des prix agricoles et alimentaires - INSEE, Document de travail n° E2002/08
- [15] Vacher Jacques - Indices statistiques, quels outils pour quelle mesure ? - INSEE-méthodes n°15 - juillet 1991 - 60 pages