

Informations *Rapides*



10 janvier 2013 - n° 5 **CONJONCTURE**

Main indicators

■ Industrial Production Indices – November 2012

In November 2012, manufacturing output increased slightly (+0.2%)

In November 2012, **manufacturing output** increased slightly (+0.2 %). Output increased also in **industry as a whole** (+0.5%).

During the last three months, manufacturing output went down by 2.2%...

During the last three months (q-o-q), output went down in the manufacturing sector (-2.2%), as well as industry as a whole (-1.8%).

Output declined in *other manufacturing* (-2.0%) and in the *manufacture of transport equipment* (-5.9%). To a lesser extent, output decreased also in the *manufacture of electrical and electronic equipment* (-0.9%). Output declined strongly in the *manufacture of coke and refined petroleum products* (-11.0%).

...and was lower than its last year's level by 3.6%.

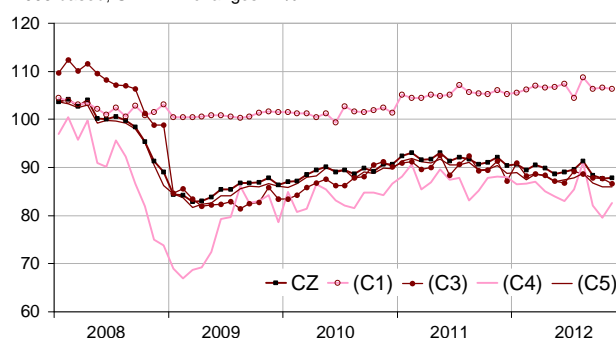
Manufacturing output fell by 3.6% (y-o-y).

Output went down sharply in *other manufacturing* (-4.0%), in the *manufacture of transport equipment* (-6.5%) as well as in the *manufacture of electrical and electronic equipment and machine equipment* (-2.9%). It declined dramatically in the *manufacture of coke and refined petroleum products* (-15.7%).

Please note: all the series are adjusted for seasonal variations (SA) and the number of working days (WDA).

Monthly industrial Production indexes

2005 based, SA-WDA changes in %



Legend : CZ : Manufacturing - (C1) : Manufacture of food products and beverages - (C3) : Electrical and electronic equipment; machine equipment - (C4) : Manufacture of transport equipment - (C5) : Other manufacturing

Sources : Insee, SSP, SOeS

Variation of the Industrial Production

2005 based, SA-WDA changes in %

NA : A10, (A17)	Nov. / Oct.	Oct. / Sept.	Q-o-Q change	Year on year change (1)
BE: INDUSTRY	0,5	-0,6	-1,8	-3,2
CZ: Manufacturing	0,2	-0,8	-2,2	-3,6
(C1): Manufacture of food products and beverages	-0,3	0,2	-0,4	0,8
(C2): Manufacture of coke and refined petroleum products	-3,5	2,8	-11,0	-15,7
(C3): Electrical and electronic equipment; machine equipment	-1,3	-0,2	-0,9	-2,9
(C4): Manufacture of transport equipment	3,8	-3,0	-5,9	-6,5
(C5): Other manufacturing	0,0	-0,9	-2,0	-4,0
DE: Mining and quarrying; energy; water supply; waste management	2,4	0,7	1,0	-0,3
FZ: CONSTRUCTION	-0,5	0,0	-1,9	-3,9

(1) Last three months / three previous months

(2) Last three months / three same months of previous year

The codes correspond to the level of aggregation A 10 (A 17) of the "NA" aggregate classification based on NAF rev.2.

Sources : INSEE, SSP, SOeS

Variation of the Industrial Production

2005 based, SA-WDA changes in %

NA : A10, (A17), [A38 ou A64]	Nov. 2012	Nov. / Oct.	Oct. / Sept.	Quarter on quarter change
BE: INDUSTRY	89,0	0,5	-0,6	-1,8
CZ: Manufacturing	87,9	0,2	-0,8	-2,2
(C1): Man. of food products and beverages	106,3	-0,3	0,2	-0,4
(C2): Man. of coke and refined petroleum products	63,4	-3,5	2,8	-11,0
(C3): Electrical and electronic equipment; machine equipment	86,6	-1,3	-0,2	-0,9
[CI] Man. of computer, electronic and optical products	86,1	-2,0	0,9	-2,2
[CJ] Man. of electrical equipment	94,7	-0,8	-2,4	-0,3
[CK] Man. of machinery and equipment n.e.c. (1)	82,4	-0,8	0,5	-0,4
(C4): Man. of transport equipment	82,6	3,8	-3,0	-5,9
[CL1] Man. of motor vehicles, trailers and semi-trailers	59,6	0,3	-6,2	-10,4
[CL2] Man. of other transport equipment	129,7	7,4	0,2	-0,7
(C5): Other manufacturing	86,0	0,0	-0,9	-2,0
[CB] Man. of textiles, wearing apparel, leather and related products	57,0	-2,2	3,6	-3,4
[CC] Man. of wood and paper products; printing and reproduction of recorded media	73,9	0,1	0,1	-1,7
[CE] Man. of chemicals and chemical products	110,1	-0,8	0,7	0,0
[CF] Man. of basic pharmaceutical products and pharmaceutical preparations	110,0	-0,4	-0,2	-0,4
[CG] Man. of rubber and plastics products, and other non-metallic mineral products	77,8	0,4	-3,5	-3,2
[CH] Man. of basic metals and fabricated metal products, except machinery and equipment	75,6	-1,2	-1,5	-3,8
[CM] Other manufacturing; repair and installation of machinery and equipment	103,7	2,9	-0,8	-0,3
(DE): Mining and quarrying; energy; water supply; waste management	96,9	2,4	0,7	1,0
[BZ] Mining and quarrying	86,5	2,5	4,6	-4,6
[DZ] Electricity, gas, steam and air-conditioning supply	97,0	2,1	1,6	2,4
[EZ] Water supply; sewerage, waste management and remediation	104,7	4,8	-7,7	-5,1
FZ: CONSTRUCTION	92,9	-0,5	0,0	-1,9
MIGs (2)				
Capital goods	87,8	1,9	-1,1	-2,8
Intermediate goods	80,6	-0,9	-1,6	-2,8
Consumer durables	80,0	0,9	-2,8	-3,9
Consumer non-durables	102,7	-0,1	0,6	-0,3

(1) n.e.c. : not elsewhere classifiable

(2) Main industrial groupings : definition in Commission regulation EC of 14 June 2007

Sources : Insee, SSP, SOeS

Output increased strongly in the manufacture of transport equipment (+3.8%).

Output soared in the manufacture of other transport equipment (+7.4%). Meanwhile, it improved slightly in the manufacture of motor vehicles, trailers and semi-trailers (+0.3%).

Output was stable in "other manufacturing".

Output increased in other manufacturing, repair and installation of machinery and equipment (+2.9%). Output improved in a less sustained pace in the manufacture of rubber and plastics products, and other non-metallic mineral products (+0.4%) and in the manufacture of wood and paper products; printing and reproduction of record (+0.1%). Output went down in the manufacture of basic metals and fabricated metal products, except machinery and equipment (-1.2%), in the manufacture of chemicals and chemical products (-0.8%), in the manufacture of textiles, wearing apparel, leather and related products (-2.2%) and in the manufacture of basic pharmaceutical products and pharmaceutical preparations (-0.4%).

On the other hand, output decreased in the manufacture of electrical and electronic equipment, machine equipment (-1.3%)...

Output dropped by 2.0% in the manufacture of electrical equipment. It declined moderately in the manufacture of machinery and equipment n.e.c. (-0.8%) and in the manufacture of computer, electronic and optical products (-0.8%).

...and in the manufacture of coke and refined petroleum products (-3.5%).

Output decreased in the manufacture of coke and refined petroleum products (-3.5%).

• Revisions: +0.11 in October

Measure of variations' revisions

	Oct. / Sept.	Sept. / Aug.	Aug. / July	Q3 2012 / Q2 2012	2011 / 2010
Industry (BE)	0,11	-0,11	0,00	-0,07	-0,01
raw serie	-0,13	0,10	-0,06	0,05	0,00
SA-WDA coefficient	0,24	-0,21	0,06	-0,12	-0,01
Manufacturing (CZ)	0,11	0,11	-0,11	-0,11	0,02
raw serie	0,09	0,10	-0,06	-0,03	0,00
SA-WDA coefficient	0,02	0,01	-0,05	-0,08	0,02

Note of reading : in the manufacturing, the SA-WDA evolution between September and October is revised by 0.11 point : 0.09 is due to the raw serie's revision and 0.02 to the new calculation of the SA-WDA.

Sources : Insee, SSP, SOeS

Learn more:

- Complementary data (long series) and metadata (methodology, linked internet pages...) are available on the HTML page of this index: <http://www.insee.fr/en/themes/info-rapide.asp?id=10>
- Historical data are available on the BDM: [G950](#), [G951](#), [G952](#), [G953](#), [G963](#).
- Press contact: bureau-de-presse@insee.fr

Next issue: February 11 2013, 8:45 AM