

Informations Rapides



10 mai 2012 - n° 117 CONJONCTURE

Main indicators

■ Industrial Production Indices – March 2012

In March 2012, manufacturing output increased (+1.4 %)

In March 2012, **manufacturing output** strongly increased in volume (+1.4 %). It had decreased in February (-0.9 %).

Output decreased in **total industry** (-0.9 %) because energy consumption had soared in February with the cold spell.

During the last quarter, manufacturing output decreased (-0.5 %)...

During the last quarter (quarter-on-quarter change), output decreased in the manufacturing sector (-0.5 %) and was almost stable in the industry as a whole (-0.1 %).

Output decreased in the "other manufacturing" (-0.3 %), in the *manufacture of electrical and electronic equipment* (-0.7 %) and in the *manufacture of transport equipment* (-0.6 %).

The huge decrease in the *manufacture of coke and refined petroleum products* (-14.3 %) is due to the closing of refineries for maintenance.

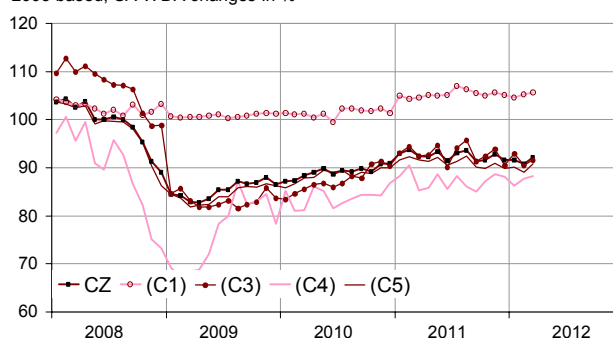
...and was lower than its last year's level by 1.7 %

Manufacturing output decreased by 1.7 % (y-o-y). It decreased in the "other manufacturing" (-2.0 %), in the *manufacture of electrical and electronic equipment and machine equipment* (-1.7 %) and in the *manufacture of transport equipment* (-0.6 %). It strongly decreased in the *manufacture of coke and refined petroleum products* (-18.4 %), due to the closing of the refinery of Petite-Couronne.

Please note: all the series are adjusted for seasonal variations (SA) and the number of working days (WDA).

Monthly industrial Production indexes

2005 based, SA-WDA changes in %



Legend : CZ : Manufacturing - (C1) : Manufacture of food products and beverages - (C3) : Electrical and electronic equipment; machine equipment - (C4) : Manufacture of transport equipment - (C5) : Other manufacturing

Sources : Insee, SSP, SOeS

Variation of the Industrial Production by activity (NA)

2005 based, SA-WDA changes in %

NA : A10, (A17)	March / Feb.	Feb. / Jan.	Quarter on quarter change	Year on year change (1)
BE: INDUSTRY	-0.9	0.9	-0.1	-1.4
CZ: MANUFACTURING	1.4	-0.9	-0.5	-1.7
(C1): Manufacture of food products and beverages	0.4	0.7	-0.1	0.5
(C2): Manufacture of coke and refined petroleum products	3.4	-5.1	-14.3	-18.4
(C3): Electrical and electronic equipment; machine equipment	1.1	-2.5	-0.7	-1.7
(C4): Manufacture of transport equipment	0.7	1.6	-0.6	-0.6
(C5): Other manufacturing	2.0	-1.3	-0.3	-2.0
(DE): Mining and quarrying; energy; water supply; waste management	-14.2	12.4	3.5	1.3
FZ: Construction	17.8	-15.7	-4.6	-5.0

(1) Last three months / three same months of previous year
The codes correspond to the level of aggregation A 10 (A 17) of the "NA" aggregate classification based on NAF rev.2.

Sources : INSEE, SSP, SOeS

Variation of the Industrial Production

2005 based, SA-WDA changes in %

NA : A10, (A17), [A38 or A64]	March		Feb.	Quarter on quarter change
	2012	/ Feb.	/ Jan.	
BE: INDUSTRY	91.9	-0.9	0.9	-0.1
CZ: MANUFACTURING	92.1	1.4	-0.9	-0.5
(C1): Man. of food products and beverages	105.7	0.4	0.7	-0.1
(C2): Man. of coke and refined petroleum products	66.8	3.4	-5.1	-14.3
(C3): Electrical and electronic equipment; machine equipment	91.6	1.1	-2.5	-0.7
[CI] Man. of computer, electronic and optical products	98.2	2.0	-2.6	3.5
[CJ] Man. of electrical equipment	98.5	1.3	-4.5	-4.0
[CK] Man. of machinery and equipment n.e.c. (1)	82.9	0.2	-0.8	-1.6
(C4): Man. of transport equipment	88.3	0.7	1.6	-0.6
[CL1] Man. of motor vehicles, trailers and semi-trailers	67.1	-2.8	1.5	-1.9
[CL2] Man. of other transport equipment	131.6	4.7	1.6	0.9
(C5): Other manufacturing	90.8	2.0	-1.3	-0.3
[CB] Man. of textiles, wearing apparel, leather and related products	57.9	0.7	-2.7	0.5
[CC] Man. of wood and paper products; printing and reproduction of recorded media	76.9	2.0	0.3	-0.5
[CE] Man. of chemicals and chemical products	112.9	0.7	-2.1	3.6
[CF] Man. of basic pharmaceutical products and pharmaceutical preparations	111.2	-0.3	0.0	-0.3
[CG] Man. of rubber and plastics products, and other non-metallic mineral products	88.5	7.1	-6.9	-2.1
[CH] Man. of basic metals and fabricated metal products, except machinery and equipment	81.0	1.5	-1.7	-0.2
[CM] Other manufacturing; repair and installation of machinery and equipment	106.3	0.4	4.9	-1.3
(DE): Mining and quarrying; energy; water supply; waste management	91.0	-14.2	12.4	3.5
[BZ] Mining and quarrying	88.4	22.9	-21.2	-7.5
[DZ] Electricity, gas, steam and air-conditioning supply	89.1	-18.2	16.7	4.4
[EZ] Water supply; sewerage, waste management and remediation	110.1	2.3	0.5	3.1
FZ: Construction	97.1	17.8	-15.7	-4.6
MIGs (2)				
Capital goods	92.5	0.8	1.7	-0.4
Intermediate goods	87.2	3.7	-4.5	-0.5
Consumer durables	80.7	-0.7	-0.9	-1.7
Consumer non-durables	102.7	0.1	0.5	-0.1

(1) n.e.c. : not elsewhere classifiable

(2) Main industrial groupings : definition in Commission regulation EC of 14 June 2007

Sources : Insee, SSP, SOeS

Output increased in the « other manufacturing » (+2.0 %)...

Output recovered in the *manufacture of rubber and plastics products* (+7.1 %), after a huge decrease in February due to the cold spell. It increased in the *manufacture of basic metals and fabricated metal products* (+1.5 %), in the *manufacture of wood and paper products; printing and reproduction of record media* (+2.0 %), in the *manufacture of chemicals and chemical products* (+0.7 %) and in the *other manufacturing, repair and installation of machinery and equipment* (+0.4 %).

... in the manufacture of electrical and electronic equipment, machine equipment (+1.1 %)...

Output increased in the *manufacture of computer, electronic and optical products* (+2.0 %), in the *manufacture of electrical equipment* (+1.3 %) and moderately in the *manufacture of machinery and equipment n.e.c.* (+0.2 %).

... as well as in the manufacture of transport equipment (+0.7 %)

Output strongly increased in the *manufacture of other transport equipment* (+4.7 %), though it decreased in the *manufacture of motor vehicles, trailers and semi-trailers* (-2.8 %).

• Revisions: +0.33 point in February

Measure of variations' revisions

(in point %)

	Feb. / Jan.	Jan. / Dec.	Dec. / Nov.	Q4 2011 / Q3 2011	2011 / 2010
Industry (BE)	0.54	0.00	0.11	-0.03	0.03
raw serie	0.32	0.00	0.00	-0.01	0.05
SA-WDA coefficient	0.22	0.00	0.11	-0.02	-0.02
Manufacturing (CZ)	0.33	0.11	0.22	0.00	-0.01
raw serie	0.34	0.11	0.10	-0.04	-0.01
SA-WDA coefficient	-0.01	0.00	0.12	0.04	0.00

Note of reading : in the manufacturing, the SA-WDA evolution between January and February is revised by 0.33 point : 0.34 is due to the raw serie's revision and -0.01 to the new calculation of the SA-WDA.

Sources : Insee, SSP, SOeS

Learn more:

- Complementary data (long series) and metadata (methodology, linked internet pages...) are available on the HTML page of this index: <http://www.insee.fr/en/themes/info-rapide.asp?id=10>
- Historical data are available on the BDM: [G950](#), [G951](#), [G952](#), [G953](#), [G963](#).
- Press contact: bureau-de-presse@insee.fr

Next issue: June 11 2012, 8:45 AM