

Informations Rapides

10 septembre 2013 - n° 205

Main indicators



Industrial Production Indices – July 2013

In July 2013, manufacturing output decreased (-0.7%)

In July 2013, compared to June, **manufacturing output** decreased (-0.7%) and **industrial production as a whole** as well (-0.6%).

During the last three months, manufacturing output was almost stable (-0.1%)...

During the last three months (q-o-q), output was almost stable in the manufacturing sector (-0.1%), and decreased slightly in industry as a whole (-0.3%).

Output decreased in *other manufacturing* (-0.5%). It dropped by 4.2% in the *manufacture of coke and refined petroleum products*. On the other hand, output increased in the *manufacture of transport equipment* (+1.4%) and in the *manufacture of electrical and electronic equipment; machine equipment* (+0.7%).

...but was lower than its last year's level by 1.1%

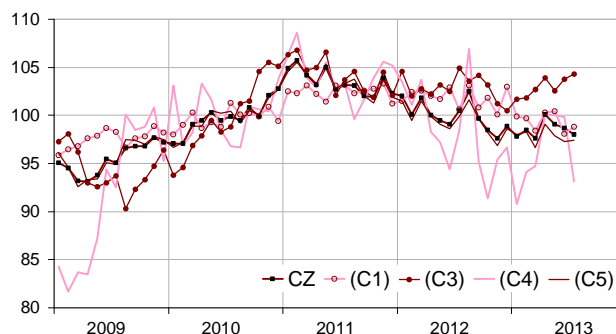
Manufacturing output decreased sharply by 1.1% (y-o-y).

Output went down in *other manufacturing* (-1.7%) and in the *manufacture of food products and beverages* (-2.6%). On the opposite, output improved in the *manufacture of transport equipment* (+1.0%) and in the *manufacture of coke and refined petroleum products* (+3.0%). It was stable in the *manufacture of electrical and electronic equipment; machine equipment*.

Please note: all the series are adjusted for seasonal variations (SA) and the number of working days (WDA).

Monthly industrial Production indexes

2010 based, SA-WDA changes in %



Legend : CZ : Manufacturing - (C1) : Manufacture of food products and beverages - (C3) : Electrical and electronic equipment; machine equipment - (C4) : Manufacture of transport equipment - (C5) : Other manufacturing

Sources : Insee, SSP, SOeS

Variation of the Industrial Production

2010 based, SA-WDA changes in %

NA : A10, (A17)	July / June	June / May	Q-o-Q change	Year on year change (1)
BE: INDUSTRY	-0.6	-1.4	-0.3	-0.4
CZ: Manufacturing	-0.7	-0.4	-0.1	-1.1
(C1): Manufacture of food products and beverages	0.7	-2.3	-0.4	-2.6
(C2): Manufacture of coke and refined petroleum products	-6.0	-0.1	-4.2	3.0
(C3): Electrical and electronic equipment; machine equipment	0.5	1.2	0.7	0.0
(C4): Manufacture of transport equipment	-6.7	-0.2	1.4	1.0
(C5): Other manufacturing	0.1	-0.6	-0.5	-1.7
(DE): Mining and quarrying; energy; water supply; waste management	-0.4	-5.3	-0.7	3.4
FZ: CONSTRUCTION	0.3	0.0	-0.1	-3.6

(1) Last three months / three previous months

(2) Last three months / three same months of previous year

The codes correspond to the level of aggregation A 10 (A 17) of the "NA" aggregate classification based on NAF rev.2.

Sources : INSEE, SSP, SOeS

Variation of the Industrial Production

2010 based, SA-WDA changes in %

NA : A10, (A17), [A38 ou A64]	Quarter			
	July 2013	July / June	June / May	on quarter change
BE: INDUSTRY	97.8	-0.6	-1.4	-0.3
CZ: Manufacturing	98.0	-0.7	-0.4	-0.1
(C1): Man. of food products and beverages	98.8	0.7	-2.3	-0.4
(C2): Man. of coke and refined petroleum products	87.7	-6.0	-0.1	-4.2
(C3): Electrical and electronic equipment; machine equipment	104.3	0.5	1.2	0.7
[CI] Man. of computer, electronic and optical products	102.1	-0.5	0.8	-0.9
[CJ] Man. of electrical equipment	99.5	1.1	1.2	-0.6
[CK] Man. of machinery and equipment n.e.c. (1)	108.7	0.6	1.6	2.6
(C4): Man. of transport equipment	93.1	-6.7	-0.2	1.4
[CL1] Man. of motor vehicles, trailers and semi-trailers	74.8	-11.2	-7.4	-1.8
[CL2] Man. of other transport equipment	113.7	-3.1	6.4	4.1
(C5): Other manufacturing	97.4	0.1	-0.6	-0.5
[CB] Man. of textiles, wearing apparel, leather and related products	99.0	0.1	0.0	3.6
[CC] Man. of wood and paper products; printing and reproduction of recorded media	88.0	-2.5	-0.8	-1.9
[CE] Man. of chemicals and chemical products	105.8	-1.2	0.2	0.0
[CF] Man. of basic pharmaceutical products and pharmaceutical preparations	99.1	-1.1	-1.0	-1.1
[CG] Man. of rubber and plastics products, and other non-metallic mineral products	93.9	-1.7	0.8	-0.5
[CH] Man. of basic metals and fabricated metal products, except machinery and equipment	96.6	1.3	-1.5	-0.2
[CM] Other manufacturing; repair and installation of machinery and equipment	100.5	2.2	-0.9	-0.9
(DE): Mining and quarrying; energy; water supply; waste management	97.0	-0.4	-5.3	-0.7
[BZ] Mining and quarrying	97.2	5.9	-1.1	-0.9
[DZ] Electricity, gas, steam and air-conditioning supply	95.4	-0.7	-6.8	-0.7
[EZ] Water supply; sewerage, waste management and remediation	108.5	-0.6	2.3	-0.1
FZ: CONSTRUCTION	96.3	0.3	0.0	-0.1
MIGs (2)				
Capital goods	99.4	-1.4	0.1	0.6
Intermediate goods	96.1	0.3	-0.7	-0.5
Consumer durables	100.0	1.0	0.0	-3.1
Consumer non-durables	100.0	-0.6	-1.1	0.0

(1) n.e.c. : not elsewhere classifiable

(2) Main industrial groupings : definition in Commission regulation EC of 14 June 2007

Sources : Insee, SSP, SOeS

Output decreased strongly in the manufacture of transport equipment (-6.7%) ...

Output fell dramatically in the manufacture of motor vehicles, trailers and semi-trailers (-11.2%). It decreased also in the manufacture of other transport equipment (-3.1%).

... as well as in the manufacture of coke and refined petroleum products (-6.0%).

Output dropped by 6.0% in the manufacture of coke and refined petroleum products.

Output increased in the manufacture of food products and beverages (+0,7%)...

Output increased in the manufacture of food products and beverages (+0.7%).

... in the manufacture of electrical and electronic equipment; machine equipment (+0.5%) ...

Output improved by 1.1% in the manufacture of electrical equipment and by 0.6% in the manufacture of machinery and equipment n.e.c.. However, it decreased by 0.5% in the manufacture of computer, electronic and optical products.

... and was steady in other manufacturing (+0.1%).

Output bounced by 2.2% in other manufacturing, repair and installation of machinery and equipment and by 1.3% in the manufacture of basic metals and fabricated metal products, except machinery and equipment. Meanwhile, output decreased in the manufacture of rubber and plastics products and other non-metallic mineral products (-1.7%), in the manufacture of wood and paper products; printing and reproduction of recorded media (-2.5%), in the manufacture of chemicals and chemical products (-1.2%) and in the manufacture of basic pharmaceutical products and pharmaceutical preparations (-1.1%).

• Revisions in June

Measure of variations' revisions

(in point %)

	June / May	May / April	April / March	Q2 2013 / Q1 2013	2012 / 2011
Industry (BE)	0.00	-0.10	0.00	-0.07	-0.01
raw serie	0.21	0.00	0.00	0.07	-0.03
SA-WDA coefficient	-0.21	-0.10	0.00	-0.14	0.02
Manufacturing (CZ)	0.00	-0.10	0.00	-0.10	-0.05
raw serie	0.30	0.01	0.00	0.13	-0.02
SA-WDA coefficient	-0.30	-0.11	0.00	-0.23	-0.03

Note of reading : in the manufacturing, the SA-WDA evolution between May 2013 and June 2013 isn't revised; the revision of the raw serie (+0.30 point) annihilates the revision due to the new calculation of the SA-WDA (-0.30 point).

Sources : Insee, SSP, SOeS

Learn more:

- Complementary data (long series) and metadata (methodology, linked internet pages...) are available on the HTML page of this index: <http://www.insee.fr/en/themes/info-rapide.asp?id=10>
- Historical data are available on the BDM: [G950](#), [G951](#), [G952](#), [G953](#), [G963](#).
- Press contact: bureau-de-presse@insee.fr

Next issue: October 10 2013, 8:45 AM